



# NEW FROM PCB PIEZOTRONICS

(Including **Endevco** Product Line)



## ACCELEROMETERS FOR SHOCK & VIBRATION MEASUREMENTS

CE



### MINIATURE CRYOGENIC ICP® ACCELEROMETER

MODEL 351A15

Sensitivity: 5.5 mV/g  
(0.56 mV/(m/s<sup>2</sup>))

Measurement range:  
±1000 g pk (±9810 m/s<sup>2</sup> pk)

Frequency Range (±5%):  
1.25 to 6500 Hz

CE



### TRIAXIAL HIGH FREQUENCY ICP® ACCELEROMETER WITH TEDS

MODELS 356A19 & 356A19/NC

Sensitivity: 10 mV/g (1.02 mV/(m/s<sup>2</sup>))

Measurement range: ±500 g pk  
(±4905 m/s<sup>2</sup> pk)

Extended frequency range:  
1 to 13,000 Hz (±5%)

Size: 0.4 in (10.2 mm) cube

CE



### CASE ISOLATED TRIAXIAL ICP® ACCELEROMETER WITH TEDS

MODELS 354B04 & 354B05

Sensitivities: 10 mV/g  
(1.02 mV/(m/s<sup>2</sup>)),  
100 mV/g (10.2 mV/(m/s<sup>2</sup>))

Measurement ranges: ±500 g pk  
(±4905 m/s<sup>2</sup> pk),  
±50 g pk (±491 m/s<sup>2</sup> pk)

Extended frequency range: 0.4 to  
10,000 Hz (±5%)

CE



### TRIAXIAL MEMS DC RESPONSE ACCELEROMETER

SERIES 3743F

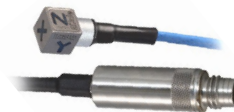
Sensitivities: 1350 mV/g to 13.5 mV/g

Measurement ranges: ±2 to ±200 g

Differential output provides  
common mode noise rejection

Hermetically sealed

CE



### MINIATURE ICP® TRIAXIAL ACCELEROMETER WITH TEDS

SERIES TLD356A01 & TLD356A03

Sensitivities:  
5 mV/g (0.51 mV/(m/s<sup>2</sup>)),  
10 mV/g (1.02 mV/(m/s<sup>2</sup>))

Measurement ranges: ±1000 g  
pk (±9810 m/s<sup>2</sup> pk) / ±500 g pk  
(±4905 m/s<sup>2</sup> pk)



## MICROPHONES FOR ACOUSTIC MEASUREMENTS

CE



### 1/2" INTRINSICALLY SAFE, FREE-FIELD ICP® MICROPHONE AND AMPLIFIER

MODEL EX378B02

Frequency range: ( $\pm 2$ dB) 3.75 to 20,000 Hz

Dynamic range: 15.5 dBA to 137 dB

ATEX, IECEx, and ETL C/US approvals

Enhanced mining approvals added



### 1/2" RUGGED ICP® MICROPHONE SYSTEMS

MODELS 379A12 & 379A13

Dynamic range: 15.5 dBA to 137 dB

Extends life of the microphone

Available in free-field or random incidence

Components available for individual purchase





## PRESSURE SENSORS FOR RESEARCH & DEVELOPMENT

CE



### CRYOGENIC ICP® PRESSURE SENSOR

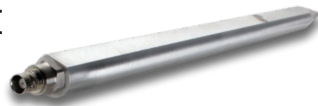
MODELS 102B10, 11, 13, 14

Measurement ranges: 100 psi (690 kPa), 200 psi (1379 kPa), 1 kpsi (6895 kPa), 10 kpsi (68950 kPa)

Temperature range: -320 to +212 °F (-196 to +100 °C)

Sensitivities: 50 mV/psi, 5.0 mV/psi, 1.0 mV/psi, 0.5 mV/psi

CE



### FREE-FIELD, QUARTZ ICP® BLAST PRESSURE PENCIL PROBE

MODEL 137B29B

Measurement range: 25 psi (173 kPa)

Temperature range: -100 to +275 °F (-73 to +135 °C)

Sensitivity: 200 mV/psi (29 mV/kPa)

Micro-second rise time with resonant frequency above 400k Hz

CE



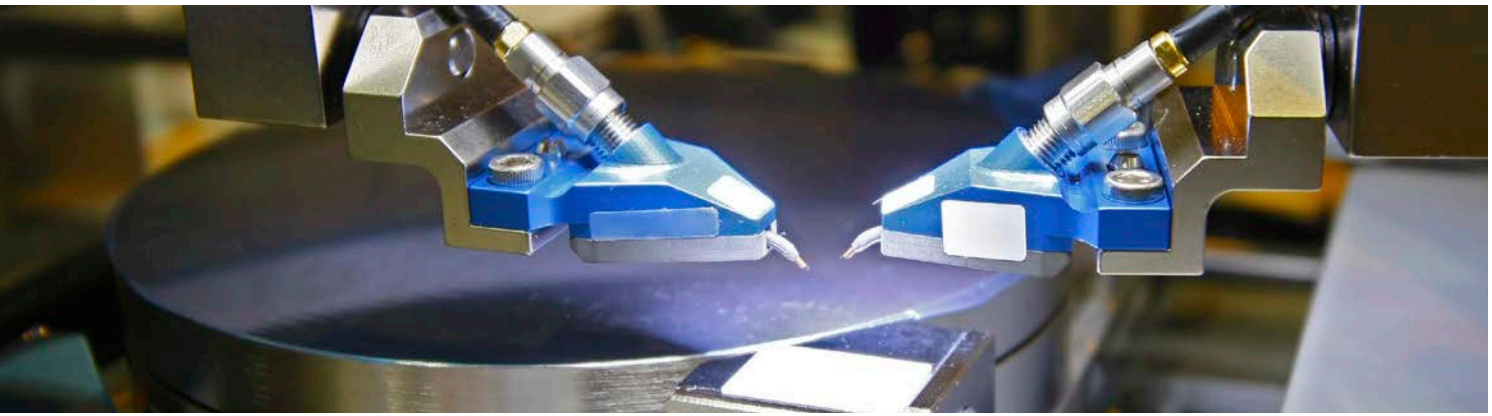
### UHT-12™ CHARGE OUTPUT PRESSURE SENSOR

MODEL 176A07

Temperature range: -94 to +1418 °F (-70 to 770 °C)

Sensitivity (±20%): 7pC/psi (101.5 pC/bar)

Acceleration sensitivity: ≤ 0.01 psi/g (0.007 kPa/(m/s<sup>2</sup>))



## FORCE SENSORS FOR RESEARCH & DEVELOPMENT

CE



### LOW-PROFILE QUARTZ ICP® FORCE RING

MODEL 201B76

Sensitivity: 1 mV/lb (224.8 mV/kN)

Measurement range: 5000 lb  
(22.24 kN)

Low-profile (0.2 in (5 mm))

5-44 electrical connector

CE



### GROUND ISOLATED TRIAXIAL ICP® FORCE LINK

MODELS (M)261B01, 02, 03

Sensitivities (Z axis):  
0.25 mV/lb (0.06 mV/N) to  
2.5 mV/lb (0.56 mV/N)

Sensitivities (X or Y axis): 1.5 mV/  
lb (0.28 mV/N) to 10 mV/lb (2.25  
mV/N)

Measurement ranges (Z axis): 1000  
lb (4.45 kN) to 10,000 lb (44.5 kN)

Measurement ranges (X or Y axis):  
500 lb (2.22 kN) to 4000 lb (17.79 kN)

Temperature range: -65 to +250 °F  
(-54 to +121 °C)

CE



### GROUND ISOLATED TRIAXIAL CHARGE MODE FORCE LINK

MODELS (M)261B11, 12, 13

Sensitivity (Z axis): 15 pC/lb

Sensitivity (X or Y axis): 32 pC/lb

Measurement ranges (Z axis):  
1000 lb (4.45 kN) to 10,000 lb  
(44.5 kN)

Measurement ranges (X or Y axis):  
500 lb (2.22 kN) to 4000 lb (17.79 kN)

Temperature range: -100 to +350 °F  
(-73 to +177 °C)



## SENSORS FOR MACHINERY HEALTH MONITORING

CE



### 4-20 mA VELOCITY TRANSMITTERS

MODELS 655A9X & 656A9X

Measurement ranges: 0.0 to 0.5 in/sec rms (0.0 to 12.7 mm/s rms), 0.0 to 1 in/sec rms (0.0 to 25.4 mm/s rms), 0.0 to 2 in/sec rms (0.0 to 50.8 mm/s rms)

Increased frequency response of 3.5 to 2 kHz

Temperature range: -40 to 221 °F (-40 to 105 °C)

CE



### CERAMIC SHEAR ICP® ACCELEROMETERS WITH INTEGRAL POLYURETHANE CABLE

MODELS RTD602D91 & RTD602D11

Dual output vibration & resistance temperature detector

Sensitivity ( $\pm 10\%$ ): 100 mV/g (10.2 mV/(m/s<sup>2</sup>))

Measurement range:  $\pm 50$  g ( $\pm 490$  m/s<sup>2</sup>)

Single-point ISO 17025 accredited calibration



## CONNECTORS & CABLE ASSEMBLIES



### TEN-CONDUCTOR SHIELDED CABLE ASSEMBLY

MODELS 037G05, 10, 20, 30

Labeled for use with PCB Series 3743

Temperature range: -31 to +250 °F  
(-35 to +121 °C)

9-socket plug to pigtail leads

Configurable lengths available



### CABLE CONNECTOR

MODEL NU

Labeled for use with PCB Series 3743

Temperature range: -58 to +250 °F  
(-50 to +121 °C)

Tinned pigtail leads with cross-linked polyolefin heat shrink



### SEXTUPLE SPLICE CABLE CONNECTOR

MODEL SL

Labeled for use with PCB Series 3713

Temperature range: -67 to +230 °F  
(-55 to +110 °C)

(3) BNC plugs and (3) pigtail leads

Maintains sensor case isolation



### FLEXIBLE FOUR-CONDUCTOR SHIELDED CABLE ASSEMBLY

ENDEVCO MODEL 3915

Suitable for use with Endevco and PCB sensors

Temperature range: -76 to 250 °F  
(-160 to 121 °C)

1/4-28, 4-socket connector with tinned, pigtail leads

Designed for high-shock environments



### HIGH STRENGTH FOUR-CONDUCTOR CABLE ASSEMBLY

ENDEVCO MODEL 3027B

Suitable for use with Endevco and PCB sensors

Temperature range: -148 to 257 °F  
(-100 to 125 °C)

1/4-28, 4-socket plug with tinned, pigtail leads

Flexible silicone jacket





**3425 Walden Avenue, Depew, NY 14043 USA**

pcb.com | info@pcb.com | 800 828 8840 | +1 716 684 0001



**10869 NC Highway 903, Halifax, NC 27839 USA**

endevco.com | sales@endevco.com | 866 363 3826

© 2023 PCB Piezotronics - all rights reserved. PCB Piezotronics is a wholly-owned subsidiary of Amphenol Corporation. Endevco is an assumed name of PCB Piezotronics of North Carolina, Inc., which is a wholly-owned subsidiary of PCB Piezotronics, Inc. Accumetrics, Inc. and The Modal Shop, Inc. are wholly-owned subsidiaries of PCB Piezotronics, Inc. IMI Sensors and Larson Davis are Divisions of PCB Piezotronics, Inc. Except for any third party marks for which attribution is provided herein, the company names and product names used in this document may be the registered trademarks or unregistered trademarks of PCB Piezotronics, Inc., PCB Piezotronics of North Carolina, Inc. (d/b/a Endevco), The Modal Shop, Inc. or Accumetrics, Inc. Detailed trademark ownership information is available at [www.pcb.com/trademarkownership](http://www.pcb.com/trademarkownership).

Corp-WhatsNew-0823