

PCB Piezotronics Inc. claims proprietary rights in the information disclosed hereon. Neither it nor any reproduction thereof will be disclosed to others without the written consent of PCB Piezotronics Inc.

REVISIONS

REV	DESCRIPTION	ECO
NR	RELEASED TO DRAFTING	
A	UPDATE TITLE BLOCK	30045

3924

ELECTRICAL CONNECTOR  
COAXIAL 10-32 UNF-2A

MODEL 060A16  
CLAMP NUT  
MATERIAL: 17-4PH

TRANSDUCER-EPOXY  
COATED FOR ELECTRICAL  
ISOLATION

2 MODEL 060A01  
THREAD ADAPTOR  
.437 [11.10] HEX  
MATERIAL: 17-4PH

MODEL 065A44  
SEAL  
MATERIAL: COOPER

MODEL 065A08  
SEAL

1.50 [38.0]

3/8-24 UNF-2A

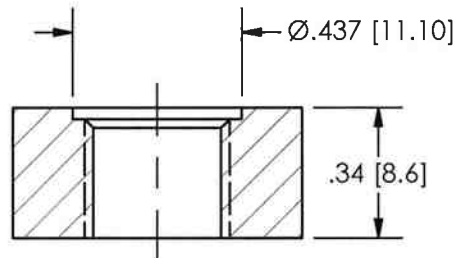
.31 [7.9] .34 [8.6]

2X MODEL 065A22 SEALS

ABLATIVE COATING 3 5

MOUNTING HOLE PREPARATION

1 Ø.332 [8.4] THRU  
└─┘ Ø.437 [11.10]  
X .030 [.76] ▽  
3/8-24 UNF-2B  
THRU



5 BLACK VINYL ELECTRICIANS TAPE HAS BEEN FOUND TO BE AN EFFECTIVE ABLATIVE MATERIAL AS IS DC-4 SILICON GREASE.

4.) RTV ABLATIVE COATING HAS BEEN APPLIED TO THE DIAPHRAGM FOR FLASH TEMPERATURE PROTECTION. REPLACE WITH: GE TYPE 580 SILICONE RUBBER KIT WITH GE SS-4004 SILICONE PRIMER.

3 THIS IS A SEALED ASSEMBLY AND SHOULD BE RETURNED TO THE FACTORY SHOULD SERVICE BECOME NECESSARY. DISASSEMBLY AND/OR RE-ASSEMBLY CAN DESTROY THE GROUND INSULATION.

2 RECOMMENDED MOUNTING TORQUE ON .437 [11.10] HEX, 3-6 FOOT POUNDS [7-11 NEWTON METERS].

1 DIMENSIONS ARE FOR .34 [8.6] THICK WALL. └─┘ THICKER WALLS Ø.75 [19.0] TO CLEAR .437 [11.10] HEX AND ALLOW FOR SOCKET WRENCH.

UNLESS OTHERWISE SPECIFIED TOLERANCES ARE:

DIMENSIONS IN INCHES

DIMENSIONS IN MILLIMETERS  
[ IN BRACKETS ]

DECIMALS XX ±.01  
XXX ±.005

DECIMALS X ±.3  
XX ±.013

ANGLES ± 2 DEGREES

ANGLES ± 2 DEGREES

FILLETS AND RADII  
.003 - .005

FILLETS AND RADII  
[ 0.07 - 0.13 ]

DRAWN	MDF	2/9/09	MFG	JAM	2/9/09
CHK'D	EOB	2/12/09	ENGR	NJL	2/9/09
APP'D	EB	2/9/09	SALES	DPC	2/9/09

TITLE  
INSTALLATION DRAWING  
102M SERIES  
PRESSURE TRANSDUCER

**PCB PIEZOTRONICS**™

3425 WALDEN AVE. DEPEW, NY 14043  
(716) 684-0001 E-MAIL: sales@pcb.com

CODE IDENT. NO. 52681  
DWG. NO. 3924

SCALE: 2 X SHEET 1 OF 1