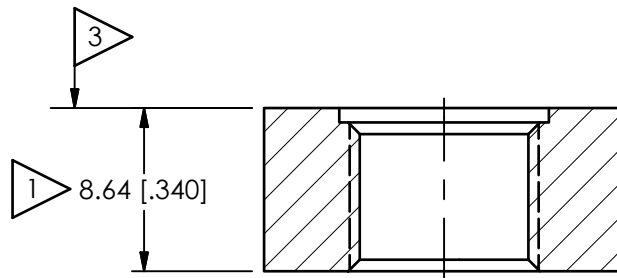
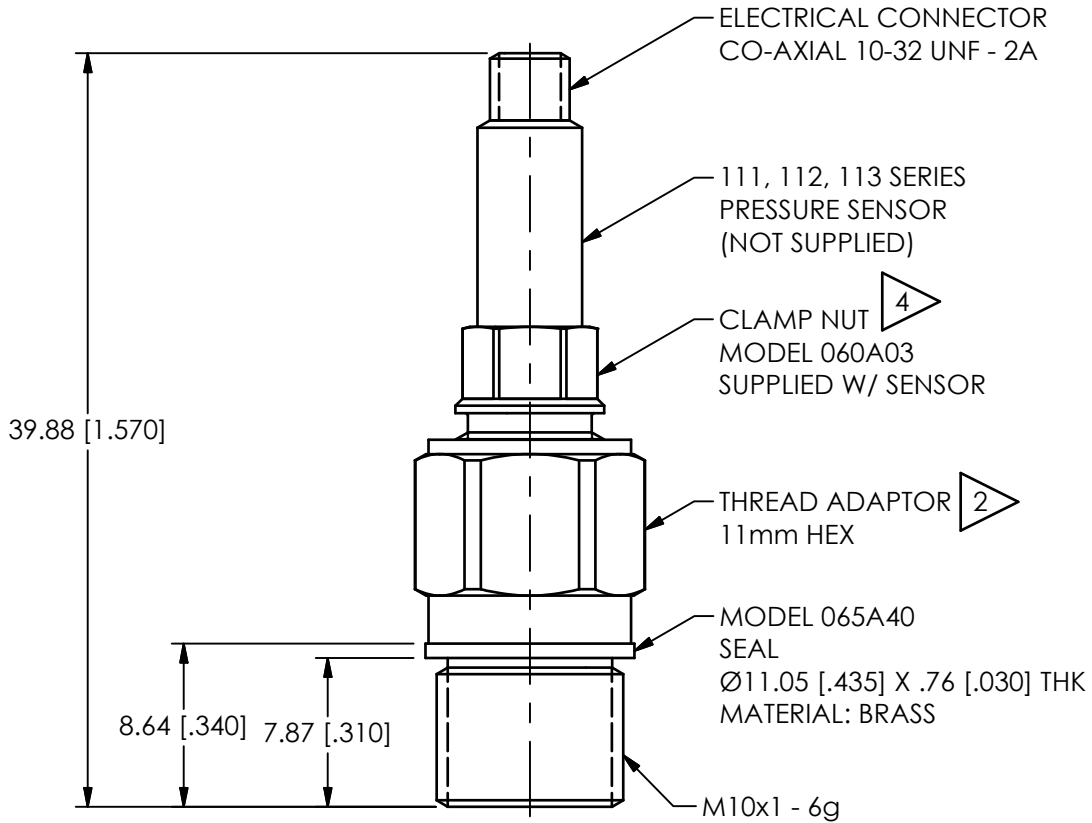


PCB Piezotronics Inc. claims proprietary rights in the information disclosed hereon. Neither it nor any reproduction thereof will be disclosed to others without the written consent of PCB Piezotronics Inc.

REV		DESCRIPTION	DIN
B		ADDED NOTE 4	48296

18785



MOUNTING HOLE PREPERATION:
M10x1 - 6H THRU
└─┬─┐ Ø11.10 [.437] ▽.76 [.030]

- 4 MOUNTING TORQUE ON 1/4 HEX, 25-35 IN-LBS [2.82-3.95 Nm]
- 3 SEAL SURFACE MUST BE FLAT AND FREE OF TOOL MARKS WITH A MINIMUM FINISH OF 63
- 2 MOUNTING TORQUE ON 11mm HEX: 6.78-10.85 Nm [5 TO 8 FT LBS]
- 1 ABOVE INSTALLATION SHOWN FOR WALL THICKNESS OF 8.64 [.340]. COUNTERBORE THICKER WALLS Ø19.05 [.75] TO CLEAR 11mm HEX AND ALLOW FOR SOCKET WRENCH

UNLESS OTHERWISE SPECIFIED TOLERANCES ARE:		DRAWN		CHECKED		ENGINEER		 3425 WALDEN AVE. DEPEW, NY 14043 (716) 684-0001 E-MAIL: sales@pcb.com		
DIMENSIONS IN INCHES	DIMENSIONS IN MILLIMETERS [IN BRACKETS]	KRM	5/30/18	KRM	5/30/18	MJK	5/30/18			
DECIMALS XX ±.01 XXX ±.005	DECIMALS X ±0.3 XX ±0.13	TITLE INSTALLATION DRAWING MODEL 061A10/061A11 THREAD ADAPTOR							CODE IDENT. NO. 52681	DWG. NO. 18785
ANGLES ± 2 DEGREES	ANGLES ± 2 DEGREES								SCALE: 2.5X	SHEET 1 OF 1
FILLETS AND RADII .003 - .005	FILLETS AND RADII 0.07 - 0.13									