



Model 691A50/06
BNC Termination Enclosure
Installation and Operating Manual

**For assistance with the operation of this product,
contact PCB Piezotronics, Inc.**

Toll-free: 800-959-4464
24-hour SensorLine: 716-684-0001
Fax: 716-684-3823
E-mail: imi@pcb.com
Web: www.imi-sensors.com





Service, Repair, and Return Policies and Instructions
--

The information contained in this document supersedes all similar information that may be found elsewhere in this manual.

Service – Due to the sophisticated nature of the sensors and associated instrumentation provided by PCB Piezotronics, user servicing or repair is not recommended and, if attempted, may void the factory warranty. Routine maintenance, such as the cleaning of electrical connectors, housings, and mounting surfaces with solutions and techniques that will not harm the physical material of construction, is acceptable. Caution should be observed to ensure that liquids are not permitted to migrate into devices that are not hermetically sealed. Such devices should only be wiped with a dampened cloth and never submerged or have liquids poured upon them.

Repair – In the event that equipment becomes damaged or ceases to operate, arrangements should be made to return the equipment to PCB Piezotronics for repair. User servicing or repair is not recommended and, if attempted, may void the factory warranty.

Calibration – Routine calibration of sensors and associated instrumentation is recommended as this helps build confidence in measurement accuracy and acquired data. Equipment calibration cycles are typically established by the users own quality regimen. When in doubt about a calibration cycle, a good “rule of thumb” is to recalibrate on an annual basis. It is

also good practice to recalibrate after exposure to any severe temperature extreme, shock, load, or other environmental influence, or prior to any critical test.

PCB Piezotronics maintains an ISO-9001 certified metrology laboratory and offers calibration services, which are accredited by A2LA to ISO/IEC 17025, with full traceability to SI through N.I.S.T. In addition to the normally supplied calibration, special testing is also available, such as: sensitivity at elevated or cryogenic temperatures, phase response, extended high or low frequency response, extended range, leak testing, hydrostatic pressure testing, and others. For information on standard recalibration services or special testing, contact your local PCB Piezotronics distributor, sales representative, or factory customer service representative.

Returning Equipment – *Following these procedures will ensure that your returned materials are handled in the most expedient manner.* Before returning any equipment to PCB Piezotronics, contact your local distributor, sales representative, or factory customer service representative to obtain a Return **Warranty, Service, Repair, and Return Policies and Instructions** Materials Authorization (RMA) Number. This RMA number should be clearly marked on the outside of all package(s) and on the packing

list(s) accompanying the shipment. A detailed account of the nature of the problem(s) being experienced with the equipment should also be included inside the package(s) containing any returned materials.

A Purchase Order, included with the returned materials, will expedite the turn-around of serviced equipment. It is recommended to include authorization on the Purchase Order for PCB to proceed with any repairs, as long as they do not exceed 50% of the replacement cost of the returned item(s). PCB will provide a price quotation or replacement recommendation for any item whose repair costs would exceed 50% of replacement cost, or any item that is not economically feasible to repair. For routine calibration services, the Purchase Order should include authorization to proceed and return at current pricing, which can be obtained from a factory customer service representative.

Contact Information – International customers should direct all inquiries to their local distributor or sales office. A

complete list of distributors and offices can be found at www.pcb.com. Customers within the United States may contact their local sales representative or a factory customer service representative. A complete list of sales representatives can be found at www.pcb.com. Toll-free telephone numbers for a factory customer service representative, in the division responsible for this product, can be found on the title page at the front of this manual. Our ship to address and general contact numbers are:

PCB Piezotronics, Inc.
3425 Walden Ave.
Depew, NY14043 USA
Toll-free: (800) 828-8840
24-hour SensorLineSM: (716) 684-0001
Website: www.pcb.com
E-mail: info@pcb.com



PCB工业监视和测量设备 - 中国RoHS2公布表
 PCB Industrial Monitoring and Measuring Equipment - China RoHS 2 Disclosure Table

部件名称	有害物质					
	铅 (Pb)	汞 (Hg)	镉 (Cd)	六价铬 (Cr(VI))	多溴联苯 (PBB)	多溴二苯醚 (PBDE)
住房	○	○	○	○	○	○
PCB板	X	○	○	○	○	○
电气连接器	○	○	○	○	○	○
压电晶体	X	○	○	○	○	○
环氧	○	○	○	○	○	○
铁氟龙	○	○	○	○	○	○
电子	○	○	○	○	○	○
厚膜基板	○	○	X	○	○	○
电线	○	○	○	○	○	○
电缆	X	○	○	○	○	○
塑料	○	○	○	○	○	○
焊接	X	○	○	○	○	○
铜合金/黄铜	X	○	○	○	○	○
本表格依据 SJ/T 11364 的规定编制。						
○：表示该有害物质在该部件所有均质材料中的含量均在 GB/T 26572 规定的限量要求以下。						
X：表示该有害物质至少在该部件的某一均质材料中的含量超出 GB/T 26572 规定的限量要求。						
铅是欧洲RoHS指令2011/65/ EU附件三和附件四目前由于允许的豁免。						

CHINA RoHS COMPLIANCE

Component Name	Hazardous Substances					
	Lead (Pb)	Mercury (Hg)	Cadmium (Cd)	Chromium VI Compounds (Cr(VI))	Polybrominated Biphenyls (PBB)	Polybrominated Diphenyl Ethers (PBDE)
Housing	O	O	O	O	O	O
PCB Board	X	O	O	O	O	O
Electrical Connectors	O	O	O	O	O	O
Piezoelectric Crystals	X	O	O	O	O	O
Epoxy	O	O	O	O	O	O
Teflon	O	O	O	O	O	O
Electronics	O	O	O	O	O	O
Thick Film Substrate	O	O	X	O	O	O
Wires	O	O	O	O	O	O
Cables	X	O	O	O	O	O
Plastic	O	O	O	O	O	O
Solder	X	O	O	O	O	O
Copper Alloy/Brass	X	O	O	O	O	O

This table is prepared in accordance with the provisions of SJ/T 11364.

O: Indicates that said hazardous substance contained in all of the homogeneous materials for this part is below the limit requirement of GB/T 26572.

X: Indicates that said hazardous substance contained in at least one of the homogeneous materials for this part is above the limit requirement of GB/T 26572.

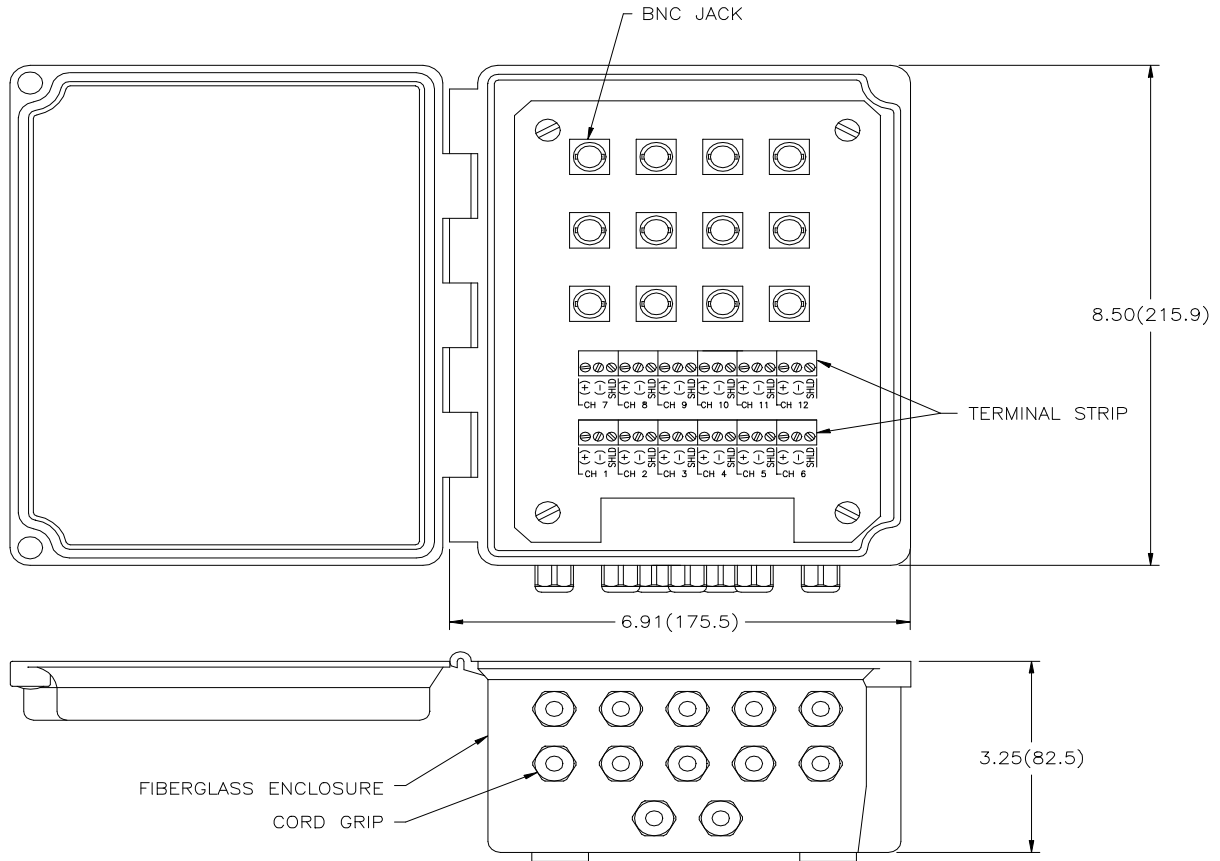
Lead is present due to allowed exemption in Annex III or Annex IV of the European RoHS Directive 2011/65/EU.

DOCUMENT NUMBER: 21354

DOCUMENT REVISION: **D**

ECN: 46162

The Model 691A50 Series Vibration BNC Breakout Boxes



Operating Guide with Enclosed Warranty Information

3425 Walden Avenue, Depew, New York 14043-2495

Phone (716) 684-0003

Fax (716) 684-3823

Toll Free Line 1-800-959-4IMI

MANUAL NUMBER: 18423

MANUAL REVISION: NR



table of contents

Introduction..... page 3

Installation page 3

warranty/servicing

See Inserts for Warranty/Servicing Information

introduction

The Model 691A50 Series are Vibration BNC Breakout Boxes that provide terminal strip input with the convenience of BNC outputs. They are used in conjunction with commercially available data collectors and analyzers. They are available in 1 channel to 12 channel units, all housed in a NEMA enclosure. They come standard in a fiberglass, NEMA 4X (IP 66) enclosure with optional painted steel, NEMA 12 (IP65) or stainless steel, NEMA 4X (IP66) enclosure. One cord grip (PGME07) is installed on the bottom of the unit per channel. A few specifications are listed below for easy reference:

<i>Input Connectors</i>	3-Socket Terminal Strip
<i>Output Connectors</i>	BNC Jack
<i>Cable Input</i>	PGME07
<i>Enclosure Type</i>	NEMA 4X (IP66)
<i>Size</i>	8 x 6 x 4 in [203 x 152 x 102 mm]

installation

Establish an easily accessible location for installation and keep in mind that the cabling will be coming from the bottom panel of the enclosure. One PGME07 cord grip is installed for each channel ordered. Use the supplied mounting feet to install the enclosure.

NOTE: *The unit has BNC connectors that can be easily contaminated. Install the unit away from sprays, cleaning fluids, steam, excess temperature (above 212°F) and other contaminants. Always keep door closed when not in use.*



3425 Walden Avenue, Depew, NY 14043-2495
Phone: (716) 684-0003 • USA Fax: (716) 684-3823 • INTL Fax: (716) 684-4703

ICP® is a registered trademark of PCB Piezotronics, Incorporated,
which uniquely identifies PCB sensors that incorporate built-in microelectronics.

Model Number 691A50/06	BNC TERMINATION ENCLOSURE	Revision: A ECN #: 47548
----------------------------------	----------------------------------	-----------------------------

	<u>ENGLISH</u>	<u>SI</u>
Performance		
Channels	6	6
Environmental		
Enclosure Rating	Nema 4X	IP66
Temperature Range	-15 to +158 °F	-26 to +70 °C
Physical		
Electrical Connector(Input)	Terminal Block	Terminal Block
Electrical Connector(Output)	BNC Jack	BNC Jack
Cable Input	PGME07	PGME07
Housing Material	Fiberglass	Fiberglass
Size (Height x Width x Depth)	8 in x 6 in x 4 in	203 mm x 152 mm x 102 mm
Weight	2.5 lb	1.14 kg

OPTIONAL VERSIONS		
Optional versions have identical specifications and accessories as listed for the standard model except where noted below. More than one option may be used.		
PS - Painted Steel		[2]
Enclosure Rating	IP65	Nema 12
Weight	5.0 lb	2.3 kg
SS - Stainless Steel Enclosure		[2]
Enclosure Rating	IP66	Nema 4X
Weight	5.5 lb	2.5 kg

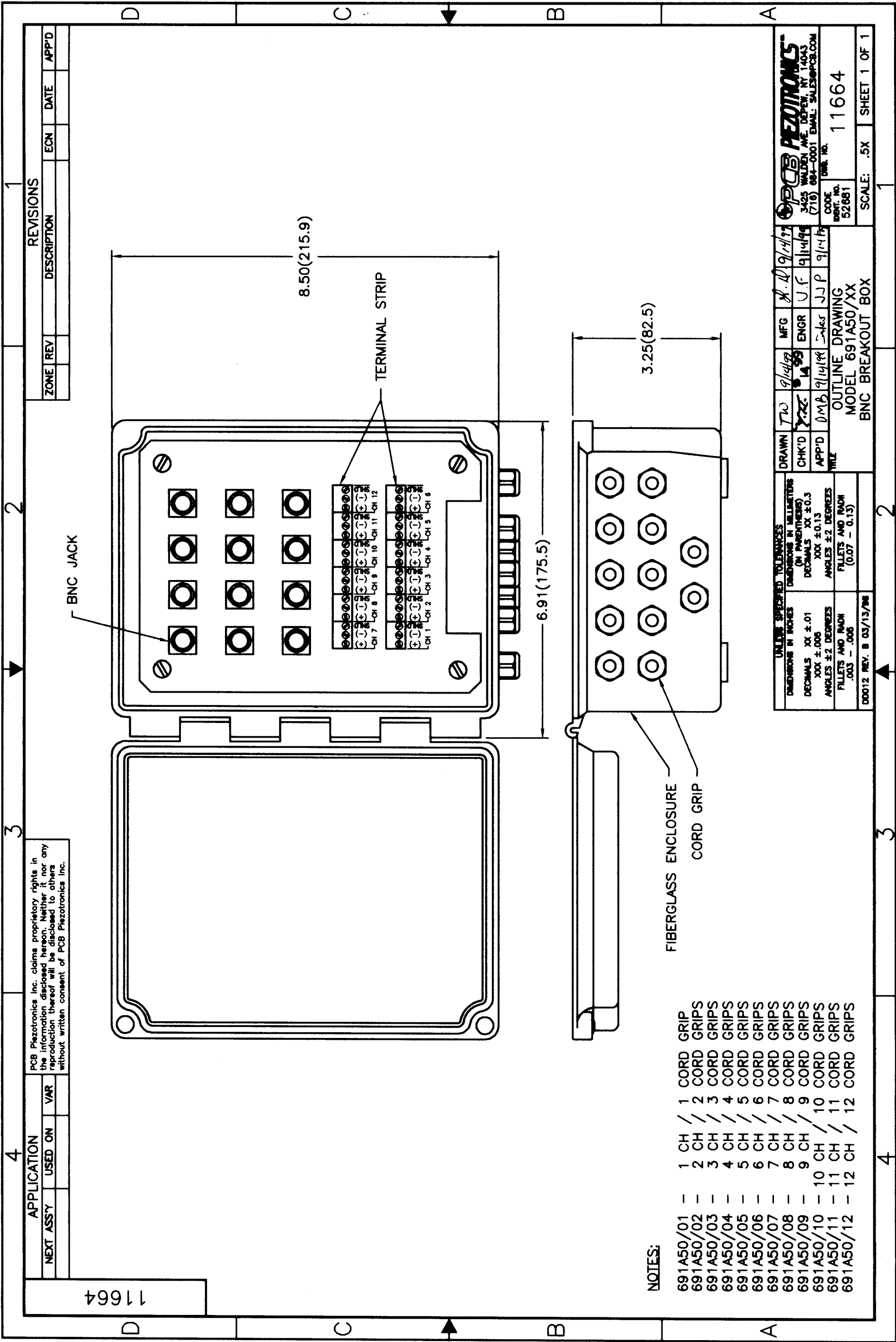


[1]
*All specifications are at room temperature unless otherwise specified.
 In the interest of constant product improvement, we reserve the right to change specifications without notice.*
 ICP® is a registered trademark of PCB Group, Inc.

NOTES:
 [1] See PCB Declaration of Conformance PS174 for details.
 [2] Mounting kit integral to enclosure.

Entered: LK	Engineer: BAM	Sales: MC	Approved: BAM	Spec Number:
Date: 12/4/2017	Date: 12/4/2017	Date: 12/4/2017	Date: 12/4/2017	20656

 IMI SENSORS A PCB PIEZOTRONICS DIV. 3425 Walden Avenue, Depew, NY 14043	Phone: 800-959-4464 Fax: 716-684-3823 E-Mail: imi@pcb.com
---	--



APPLICATION		REVISIONS	
NEXT ASSY	USED ON	DESCRIPTION	DATE

PCB Piezotronics Inc. claims proprietary rights in the information disclosed hereon. Neither it nor any reproduction thereof will be disclosed to others without written consent of PCB Piezotronics Inc.

11664

NOTES:

691A50/01	-	1	CH	/	1	CORD GRIP
691A50/02	-	2	CH	/	2	CORD GRIPS
691A50/03	-	3	CH	/	3	CORD GRIPS
691A50/04	-	4	CH	/	4	CORD GRIPS
691A50/05	-	5	CH	/	5	CORD GRIPS
691A50/06	-	6	CH	/	6	CORD GRIPS
691A50/07	-	7	CH	/	7	CORD GRIPS
691A50/08	-	8	CH	/	8	CORD GRIPS
691A50/09	-	9	CH	/	9	CORD GRIPS
691A50/10	-	10	CH	/	10	CORD GRIPS
691A50/11	-	11	CH	/	11	CORD GRIPS
691A50/12	-	12	CH	/	12	CORD GRIPS

UNLESS SPECIFIED TOLERANCES	
DIMENSIONS IN INCHES	DIMENSIONS IN MILLIMETERS
DECIMALS XX ±.01	(IN PARENTHESES)
XXX ±.006	DECIMALS XX ±0.3
ANGLES ±2 DEGREES	XXX ±0.13
FILLET AND RADIUS	ANGLES ±2 DEGREES
.003 - .006	FILLET AND RADIUS
	(0.07 - 0.13)

00012 REV. B 03/13/86																
DRAWN	TW	9/14/99	MFG	S. D.	9/14/99	CHK'D	LA	9/14/99	ENGR	U.F.	9/14/99	APP'D	JJP	9/14/99	TITLE	OUTLINE DRAWING MODEL 691A50/XX BNC BREAKOUT BOX

PCB PIEZOTRONICS	
3425 WALDEN AVE. DEPEW, NY 14043	
(716) 684-0001 EMAIL: SALES@PCB.COM	
CODE	DWG. NO.
52681	11664
SCALE: .5X SHEET 1 OF 1	