



Combustion Dynamics Instrumentation

For the Most Demanding Gas Turbine Measurement & Monitoring Requirements



 **IMI SENSORS**
A PCB PIEZOTRONICS DIV.

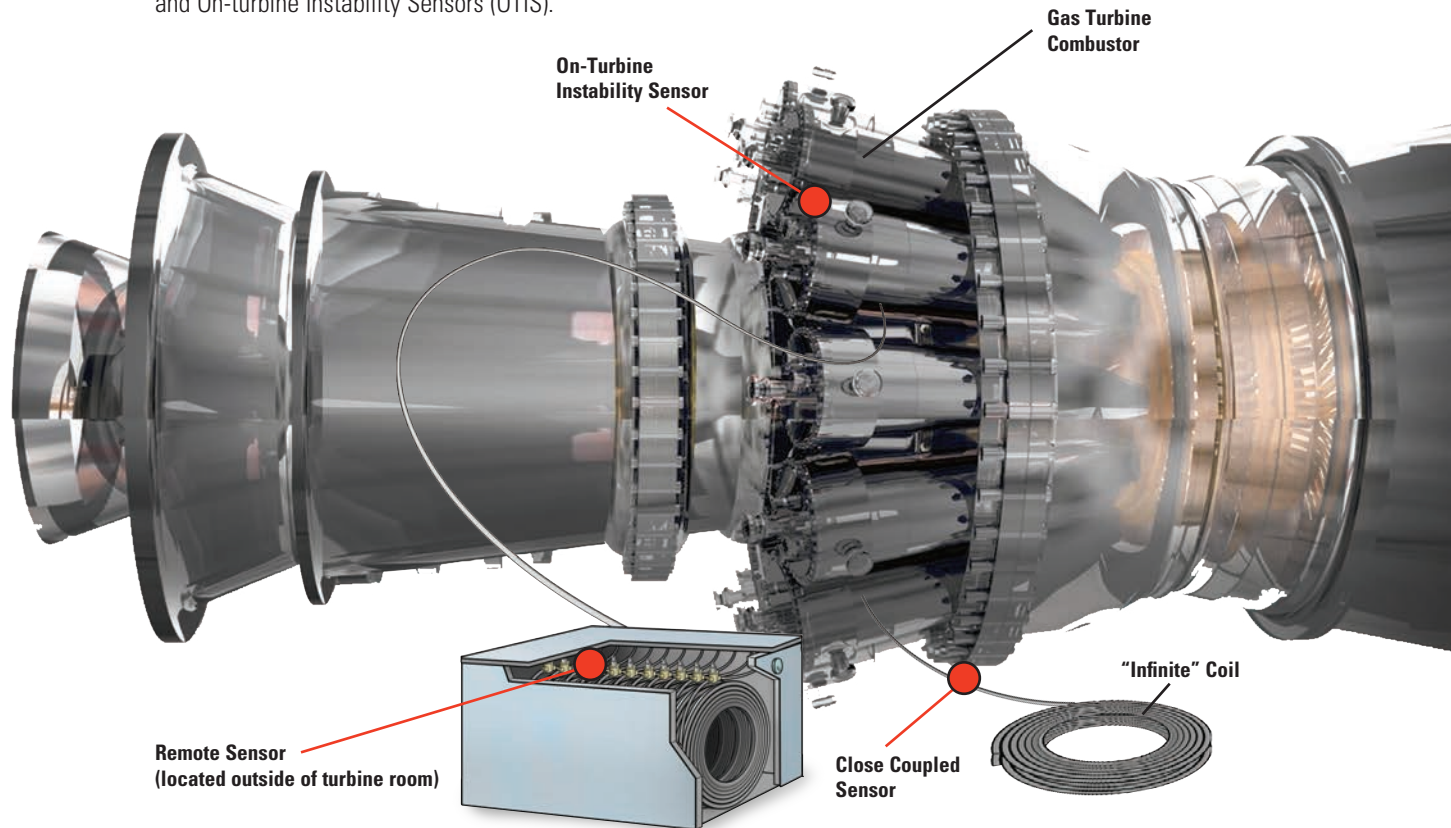
Energy & Power Generation

Combustion Dynamics Instrumentation

For more than 40 years, PCB® has specialized in the design and manufacture of innovative sensors and measurement systems for the gas turbine market. In those four decades, our expertise in combustion dynamics instrumentation has met the industry's most demanding requirements for dynamic combustion measurement and turbine engine monitoring.

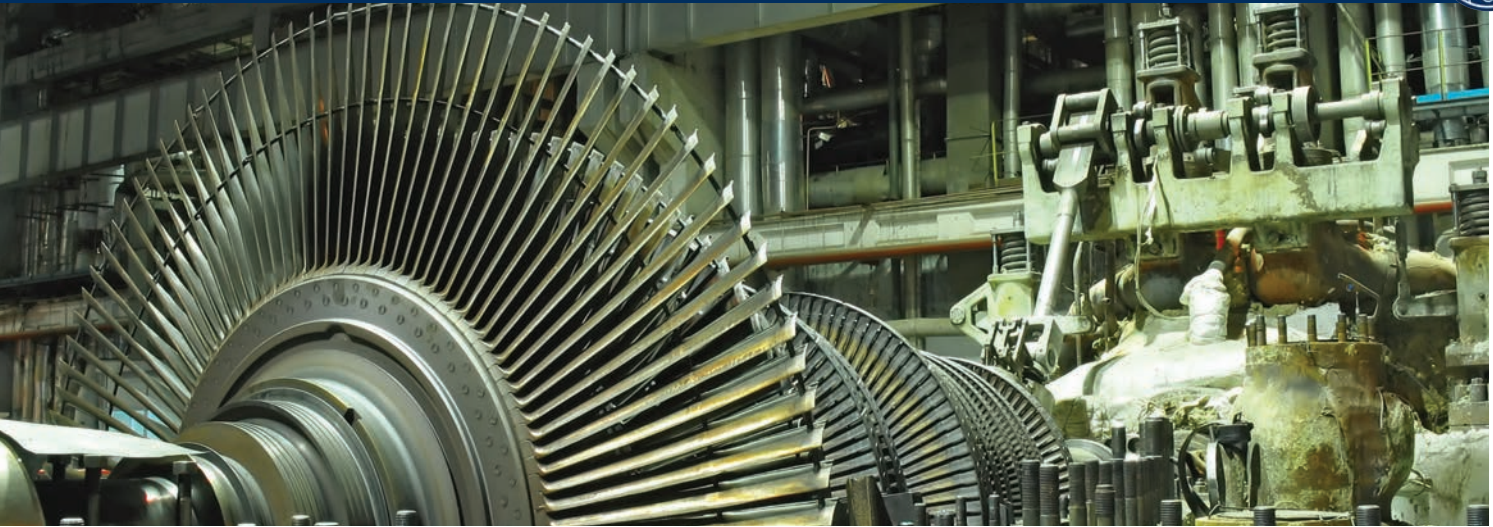
With the move toward increased fuel efficiency and lower exhaust emissions, today's gas turbine engines are based on technological innovation yet also bring potential problems. Burning a leaner flame keeps NOx emissions low but at the same time increases instability (combustion dynamics) in the gas turbine engine. This instability can damage components in the combustion chamber such as nozzles, baskets and transition pieces, as well as downstream components such as blades, resulting in downtime and loss of revenue.

IMI's instrumentation is designed to detect and measure dynamic pressure spikes, pulsations and surges in gas turbine engines. Our pressure sensors have three basic applications for detecting and measuring dynamic pressure phenomena and combustion instability in gas turbine engines: remote sensors, close coupled sensors and On-turbine Instability Sensors (OTIS).



The diagram above shows a typical setting for a gas turbine in a power generation plant. Shown within the illustration are the three standard methods of measuring pressure; Remote, Close Coupled and On-Turbine Instability Sensor (OTIS). The red bullets indicate the location of the actual sensor for each different method.

● Suggested Sensor Placement



Remote Sensors - Energy & Power Generation



CE ICP® Pressure Sensor
Model 102M205

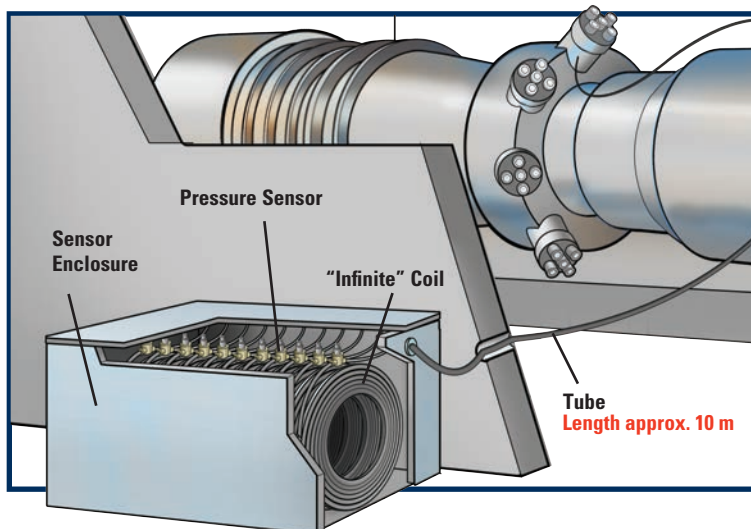
- Sensitivity: 50 mV/psi
- Measurement Range: 100 psi pk
- 316 stainless steel diaphragm
- 3/8-24 UNF fitting



CE ICP® Pressure Sensor
Model 121A44

- Sensitivity: 100 mV/psi
- Measurement Range: 50 psi pk
- 316 stainless steel diaphragm
- 1/4" NPT fitting

These pressure sensors have either a portable or permanent configuration. Portable systems consist of pressure sensors that are connected to sensing lines running to some or all of the combustors. Similar to the portable systems, permanent systems provide sensors mounted outside the turbine enclosure.



The sensors are then connected through sensing lines (tubing) to each combustor. Because of the long sensing lines involved, the ability to "purge" condensation is required. There are advantages to this simple, low cost approach. Because the sensors are mounted outside the turbine enclosure, the conditions the sensors must endure are relatively mild, thus allowing for the use of less expensive sensors with longer life expectancy. In addition, these sensors can be serviced while the turbine is online.

Energy & Power Generation

Combustion Dynamics Instrumentation

Close Coupled Sensors - Energy & Power Generation



500°F
(260 °C)



High Temperature Pressure Sensor Model EX171M01

- Sensitivity: 1100 pC/psi
- Measurement Range: 10 psi
- Frequency Range: Up to 5 kHz

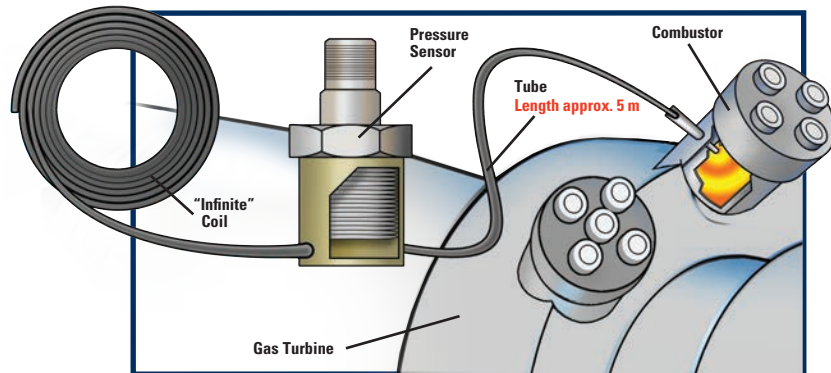


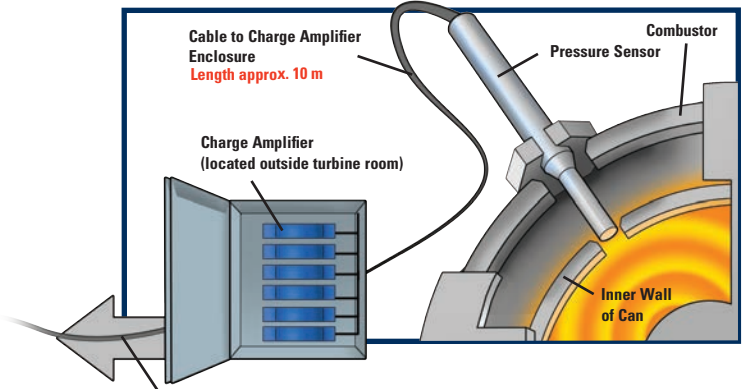
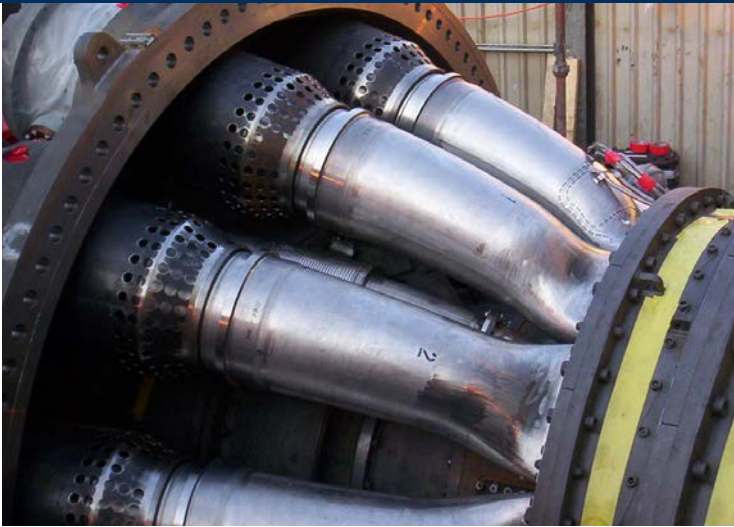
CE In-Line Charge Converter Model 422E55/D

- Sensitivity: 0.5 mV/pC
- Voltage Output: ± 2.5 V pk
- Temperature Range (Operating): -65 to +250 °F
- Housing Material: Stainless steel

Close coupled sensors permanently mounted to a gas turbine are ideal for monitoring combustion dynamics (instability). Operating at a wider frequency range than remote sensors, the high sensitivity and higher-temperature capability of these sensors allow for precision measurement in turbine locations where the application of other instrumentation is not possible.

Close coupling of the sensors to the combustor enables the measurement and detection of dynamic pressure phenomena such as high frequency events that can cause damage to downstream components such as blades. Like the portable and permanent remote sensors, close coupled sensors also require a purging system to eliminate condensation.





On-Turbine Instability Sensors (OTIS) - Energy & Power Generation

1200°F
(649 °C)

Extreme Temperature Pressure Sensor

Model 176A02



- Sensitivity: 6pC/psi
- Measurement Range: 725 psi pk
- Frequency Range: Up to 20 kHz



1200°F
(649 °C)

Extreme Temperature Pressure Sensor

Model 176A03



- Sensitivity: 16 pC/psi
- Measurement Range: 290 psi pk
- Frequency Range: Up to 10 kHz



662°F
(350 °C)

High Temperature Pressure Sensor

Model 176A04

- Sensitivity: 15.5 pC/psi
- Measurement Range: 300 psi pk
- Frequency Range: Up to 10 kHz



968°F
(520 °C)

Very High Temperature Pressure Sensor

Model 176A05



- Sensitivity: 52 pC/psi
- Measurement Range: 725 psi pk
- Frequency Range: Up to 8 kHz



986°F
(530 °C)

Very High Temperature Pressure Sensor

Models 176M03 and 176M09



- Sensitivity: 17 pC/psi
- Measurement Range: 20 psi pk
- Frequency Range: Up to 10 kHz



986°F
(530 °C)

Very High Temperature Pressure Sensor

Models 176M07 and 176M12



- Sensitivity: 17 pC/psi
- Measurement Range: 20 psi pk
- Frequency Range: Up to 6 kHz



High temperature sensors directly mounted to the combustor basket provide 24/7, consistent, reliable combustion dynamics data monitoring so that tuning changes can be made at anytime. On-Turbine Instability Sensors allow for diagnostics, part fatigue analysis and the ability to continuously monitor and control emissions. The higher frequency capability of the OTIS sensors enable the use of auto-tuning and online diagnostic monitoring systems. In addition, these sensors provide an output that can easily connect to legacy combustion dynamics monitoring systems. By having sensors directly mounted to the combustor, operators save time during combustion analysis.

Energy & Power Generation

Combustion Dynamics Instrumentation

High Temperature Accelerometers - Energy & Power Generation

Vibration monitoring of gas turbines can provide crucial information to diagnose potential problems, leading to an increase in uptime and a decrease in unplanned maintenance, catastrophic failures and accidents.



500°F
(260 °C)

High Temperature Charge Accelerometer

Model EX615A42

- Sensitivity: 100 pC/g
- Measurement Range: ± 200 g pk
- Frequency Range: Up to 6 kHz
- Electrical Connector: Integral cable



Innovations in high temperature accelerometer technology for gas turbine monitoring now enable vibration measurement in extreme heat environments up to +1200 °F (+649 °C). IMI's high temperature accelerometers come in a variety of frequencies, temperature ranges and configurations. Integral charge amplifiers allow for use with standard data acquisition equipment.

1200°F
(649 °C)

Extreme Temperature Charge Accelerometer

Series 357E9X

- Sensitivity: 2.3 pC/g (357E92 and 357E93) or 5 pC/g (357E90 and 357E91)
- Measurement Range: ± 1000 g pk
- Frequency Range: Up to 2.5 kHz
- UHT-12™ element



1200°F
(649 °C)

Extreme Temperature Charge Accelerometer

Model EX611A00

- Sensitivity: 10 pC/g
- Measurement Range: ± 200 g pk
- Frequency Range: Up to 2.8 kHz
- UHT-12™ element



Differential Charge Amplifiers - Energy & Power Generation



Differential Charge Amplifier

Model 422M182

- Sensitivity: 4 mV/pC
- Voltage Output: ± 5 V pk
- Temperature Range (Operating): -60 to +185 °F



Differential Charge Amplifier

Model 421A3X

- Sensitivity: Configurable
- Voltage Output: ± 5 V pk
- Temperature Range (Operating): -22 to +185 °F



Differential Charge Amplifier

Model EX682A40

- Sensitivity: 10 mV/pC
- Voltage Output: ± 2.5 V pk
- Temperature Range (Operating): -40 to +176 °F



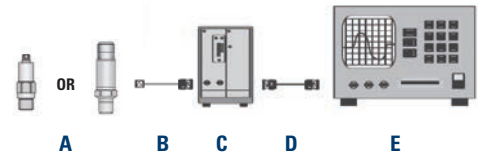


Combustion Dynamics Instrumentation Recommended Components for a Typical Installation

For Remote Pressure Sensors

Model 102M205:

- A** Model 102M205 – ICP® Pressure Sensor
- B** Model 003CXX – Cable with 10-32 plug to BNC plug
- C** ICP® sensor signal conditioner (Optional)
- D** Model 012A03 – Cable with BNC plug to BNC plug (Optional)
- E** Readout, recording or data acquisition device



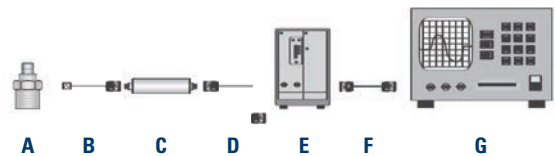
Model 121A44:

- A** Model 121A44 – ICP® Pressure Sensor
- B** Model 052BPXXXAC – Cable with 2-socket MIL connector to BNC plug
- C** ICP® sensor signal conditioner (Optional)
- D** Model 012A03 – Cable with BNC plug to BNC plug (Optional)
- E** Readout, recording or data acquisition device

For Close Coupled Pressure Sensors

Model EX171M01:

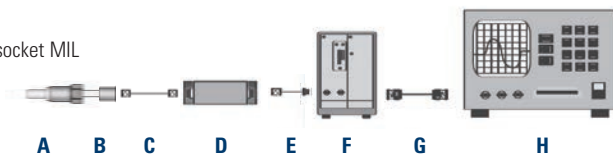
- A** Model EX171M01 – Differential Charge Pressure Sensor
- B** Model 045ERXXXAC – Cable with 2-socket MIL connector to BNC plug
- C** Model 422E55/D – Inline Charge Amplifier
- D** Model 012A03 – Cable with BNC plug to BNC plug
- E** ICP® sensor signal conditioner (Optional)
- F** Model 012A03 – Cable with BNC plug to BNC plug (Optional)
- G** Readout, recording or data acquisition device



For On-Turbine Instability Pressure Sensors

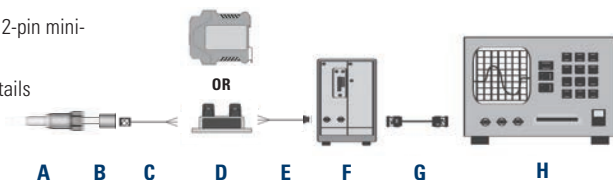
Models 176AXX and 176MXX

- A** Model 176AXX or 176MXX – Differential Charge Pressure Sensor
- B** Model 013GNXXXGP- Hardline cable with 2-socket mini-MIL connector to 2-pin mini-MIL connector (Model 176A04 only)
- C** Model 045M21A – Softline cable with 2-socket mini-MIL connector to 2-socket MIL connector
- D** Model 422M182 – Differential Charge Amplifier
- E** Model 012A03 – Softline cable with BNC plug to BNC plug
- F** ICP® signal conditioner (Optional)
- G** Model 012A03 – Softline cable with BNC plug to BNC plug (Optional)
- H** Readout, recording or data acquisition device



OR

- A** Model 176AXX or 176MXX – Differential Charge Pressure Sensor
- B** Model 013GNXXXGP- Hardline cable with 2-socket mini-MIL connector to 2-pin mini-MIL connector (Model 176A04 only)
- C** Model 045M19A – Softline cable with 2-socket mini-MIL connector to pigtailed
- D** Model 421A3X or EX682A40 – Differential Charge Amplifier
- E** Model 052ADXXXAC – Softline cable with pigtailed to BNC plug
- F** ICP® signal conditioner (Optional)
- G** Model 012A03 – Softline cable with BNC plug to BNC plug (Optional)
- H** Readout, recording or data acquisition device





Corporate Headquarters - Depew, NY



The Global Leader in Sensors & Instrumentation For All Your Industrial Applications!

- Motor Vibration
- Pumps & Submersible Pumps
- Paper Machines & Conveyors
- Combustion Dynamics Instrumentation
- Cooling Towers & HVAC
- Gearboxes
- Wind Turbine Condition Monitoring
- Oil & Gas Wells and Pipelines
- Vibration Screens & Feeders
- Reciprocating Machinery
- Machine Tool Spindles
- Steel Rolling & Annealing
- Rotary Screw Compressors
- Nuclear Power Instrumentation
- Shock Monitoring

Over 10,000 Sensors In Stock and Ready to Ship!

IMI Sensors Platinum Stock Products represent some of our most popular models and can be used in a wide range of applications. As you browse this brochure, you will find Platinum Products indicated with the "Platinum Shield" icon (right).



Our Platinum Products are available with our Lifetime Warranty and fast delivery. If for any reason you are not 100% satisfied with your IMI Sensors Platinum Stock Product, we will repair, replace or exchange the product at no charge. For U.S. customers, all IMI Sensors Platinum Stock Products will ship within 24 hours. IF NOT, YOUR SHIPPING IS FREE!

Visit www.imi-sensors.com for complete details.

IMI SENSORS A PCB PIEZOTRONICS DIV.

Corporate Headquarters 3425 Walden Avenue Depew, NY 14043-2495 USA
Toll-free in the USA 800-959-4464 ■ **24-hour SensorLineSM** 716-684-0003
Fax 716-684-3823 ■ **Email** imi@pcb.com ■ **Website** www.imi-sensors.com
AS9100 CERTIFIED ■ ISO 9001 CERTIFIED ■ A2LA ACCREDITED to ISO 17025



© 2017 PCB Group, Inc. In the interest of constant product improvement, specifications are subject to change without notice. PCB, ECHO, ICP, IMI, Modally Tuned, Spindler, Swiveler and TORKDISC are registered trademarks of PCB Group. SoundTrack LXT, Spark and Blaze are registered trademarks of PCB Piezotronics. SensorLine is a service mark of PCB Group. All other trademarks are properties of their respective owners. PCB is an EOE/AAP Employer.

IMI-App-Combustion-0217

Printed in U.S.A.

