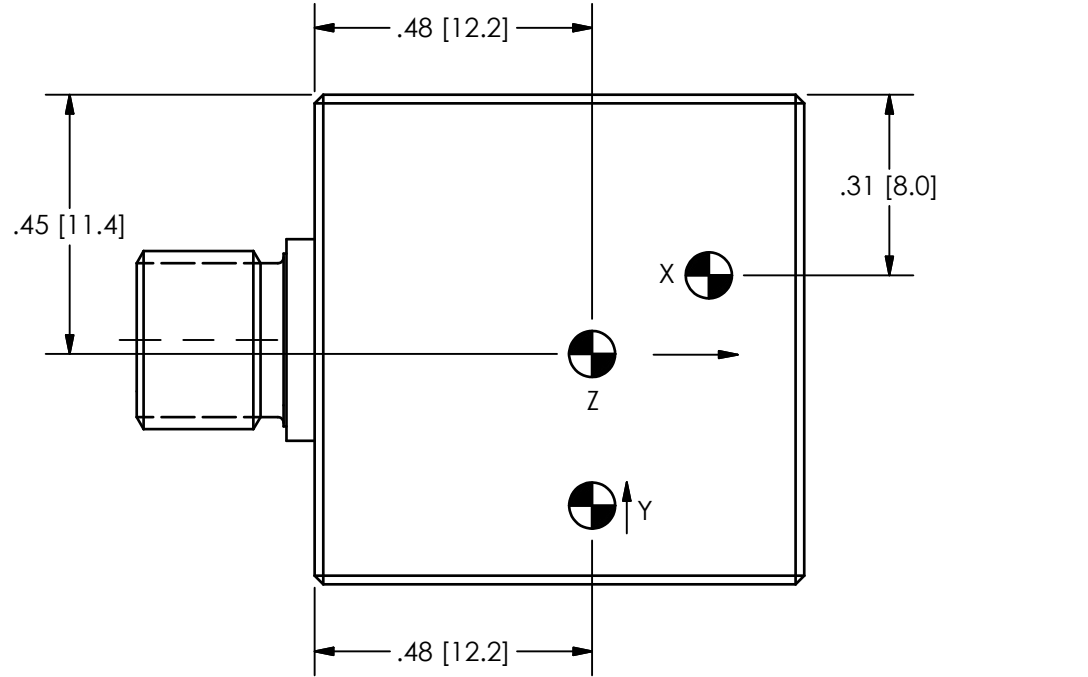
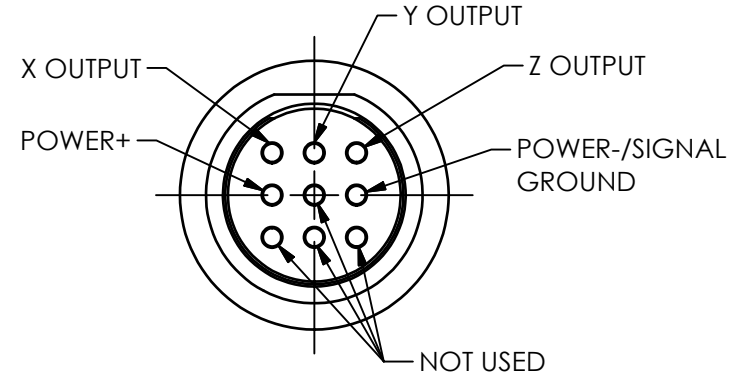


57379

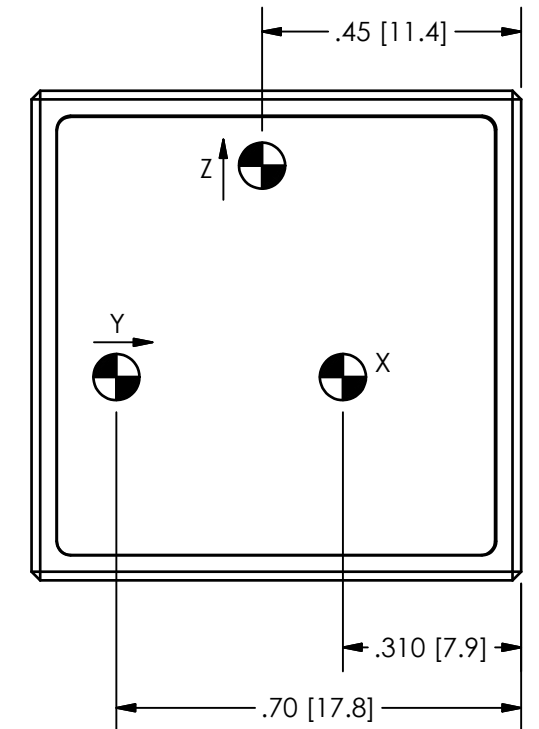
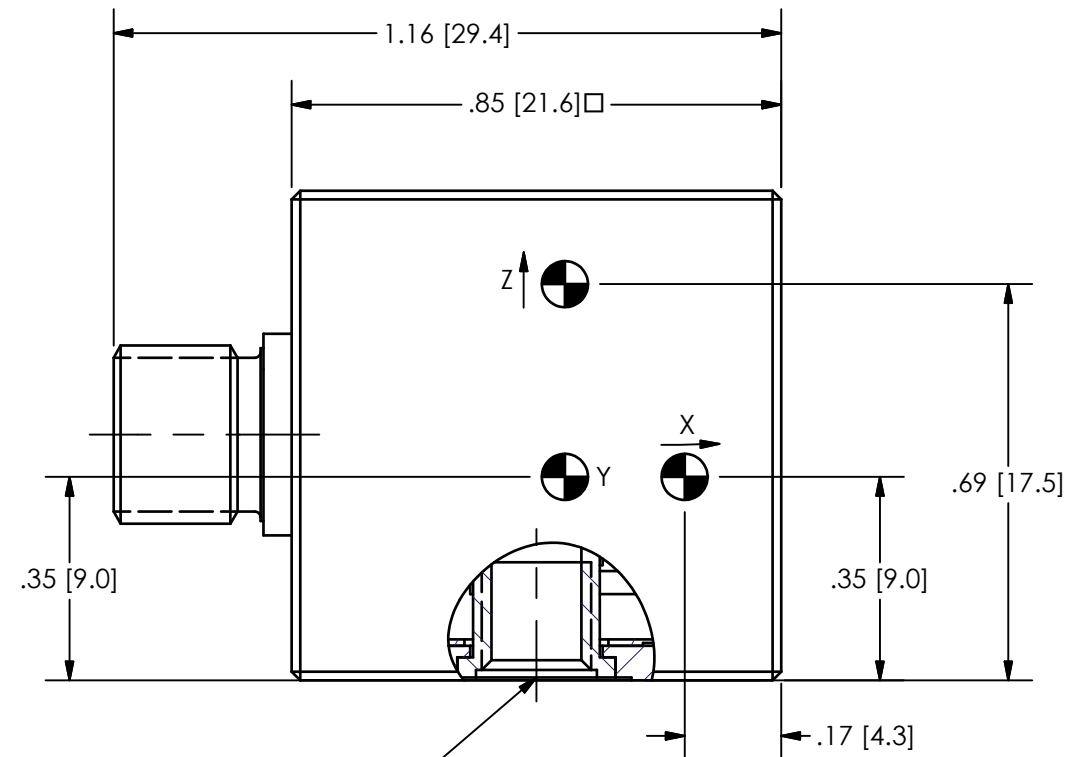
PCB Piezotronics Inc. claims proprietary rights in the information disclosed hereon. Neither it nor any reproduction thereof will be disclosed to others without the written consent of PCB Piezotronics Inc.

| REVISIONS |                 |       |
|-----------|-----------------|-------|
| REV       | DESCRIPTION     | DIN   |
| A         | UPDATED Z ARROW | 44524 |



OUTPUT SIGNAL:  
REFERENCE TO GROUND

POWER:  
CONNECT TO DC VOLTAGE  
POWER SUPPLY. SEE  
SPECIFICATION SHEET FOR  
PROPER EXCITATION VOLTAGE



4.) SEE SHEET 2 OF 2 FOR CABLE STRAIN RELIEF INFORMATION

3.) DENOTES CG-CENTER OF SEISMIC MEASUREMENT.

2.) MOUNTING SURFACE SHOULD BE FLAT TO WITHIN .001 [0.03] TIR OVER  $\varnothing 1.20 [\varnothing 30.5]$  WITH A MINIMUM  $\sqrt[32]{.08}$  FINISH FOR BEST RESULTS.

1.) DRILL PERPENDICULAR TO MOUNTING SURFACE TO WITHIN  $\pm 1^\circ$ .

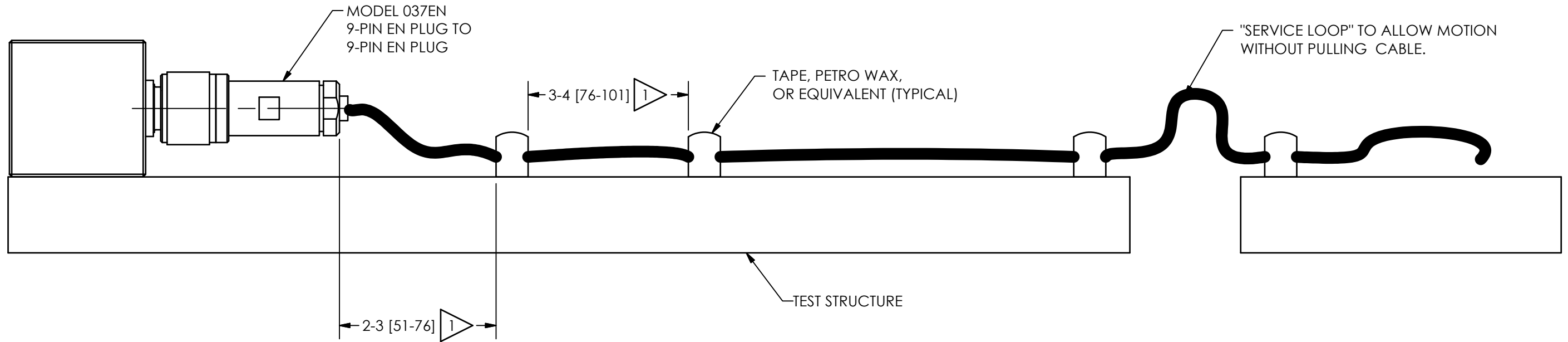
| UNLESS OTHERWISE SPECIFIED TOLERANCES ARE: |   | DRAWN  |         | CHECKED           |         | ENGINEER               |         | PCB PIEZOTRONICS™  |  |
|--|---|--|---------|-------------------|---------|------------------------|---------|--|--|
| DIMENSIONS IN INCHES                       | DIMENSIONS IN MILLIMETERS [IN BRACKETS] | BB   | 9/14/15 | ECB               | 9/14/15 | JJD                    | 9/14/15 | 3425 WALDEN AVE. DEPEW, NY 14043<br>(716) 684-0001 E-MAIL: sales@pcb.com |  |
| DECIMALS XX ±.03<br>XXX ±.010              | DECIMALS X ±0.8<br>XX ±0.25             | TITLE<br>OUTLINE DRAWING<br>MODEL 3713E1XXXG<br>TRIAxIAL ACCELEROMETER |         |                   |         |                        |         |  |  |
| ANGLES ± 2 DEGREES                         | ANGLES ± 2 DEGREES                      |  |         |                   |         |                        |         |  |  |
| FILLETS AND RADII<br>.003 - .005           | FILLETS AND RADII<br>0.07 - 0.13        | CODE IDENT. NO.<br>52681   |         | DWG. NO.<br>57379 |         | SCALE: 3X SHEET 1 OF 2 |         |  |  |

PCB Piezotronics Inc. claims proprietary rights in the information disclosed hereon. Neither it nor any reproduction thereof will be disclosed to others without the written consent of PCB Piezotronics Inc.

57379

REVISIONS

| REV | DESCRIPTION   | DIN |
|-----|---------------|-----|
|     | -SEE SHEET 1- |     |



1 FASTEN CABLE TO TEST STRUCTURE TYPICALLY WITHIN 2-3"[51-76] OF SENSOR. THEN FASTEN AGAIN WITHIN 3-4"[76-101] OF PREVIOUS ATTACHMENT. BETWEEN THE TEST STRUCTURE AND A FIXED STRUCTURE, ALLOW A SERVICE LOOP LARGE ENOUGH TO PREVENT PULLING OF THE CABLE WHEN SHAKING. MORE ATTACHMENT POINTS WILL PROVIDE LESS NOISE IN THE RESULTING DATA. LOOSE CABLES OR PARTS ELSEWHERE ON THE TEST STRUCTURE CAN ALSO GENERATE "NOISE" ON THE SIGNAL RECEIVED FROM THE MODEL 3713 SERIES.

| UNLESS OTHERWISE SPECIFIED TOLERANCES ARE: |   | DRAWN  |         | CHECKED           |         | ENGINEER                 |         |
|--|---|--|---------|-------------------|---------|--------------------------|---------|
| DIMENSIONS IN INCHES                       | DIMENSIONS IN MILLIMETERS [IN BRACKETS] | BB   | 9/14/15 | ECB               | 9/14/15 | JJD                      | 9/14/15 |
| DECIMALS XX ±.03<br>XXX ±.010              | DECIMALS X ±0.8<br>XX ±0.25             | TITLE<br>OUTLINE DRAWING<br>MODEL 3713E1XXXG<br>TRIAxIAL ACCELEROMETER |         |                   |         |                          |         |
| ANGLES ± 2 DEGREES                         | ANGLES ± 2 DEGREES                      |  |         |                   |         |                          |         |
| FILLETS AND RADII<br>.003 - .005           | FILLETS AND RADII<br>0.07 - 0.13        | CODE IDENT. NO.<br>52681   |         | DWG. NO.<br>57379 |         | SCALE: 1.5X SHEET 2 OF 2 |         |

**PCB PIEZOTRONICS™**  
3425 WALDEN AVE. DEPEW, NY 14043  
(716) 684-0001 E-MAIL: sales@pcb.com