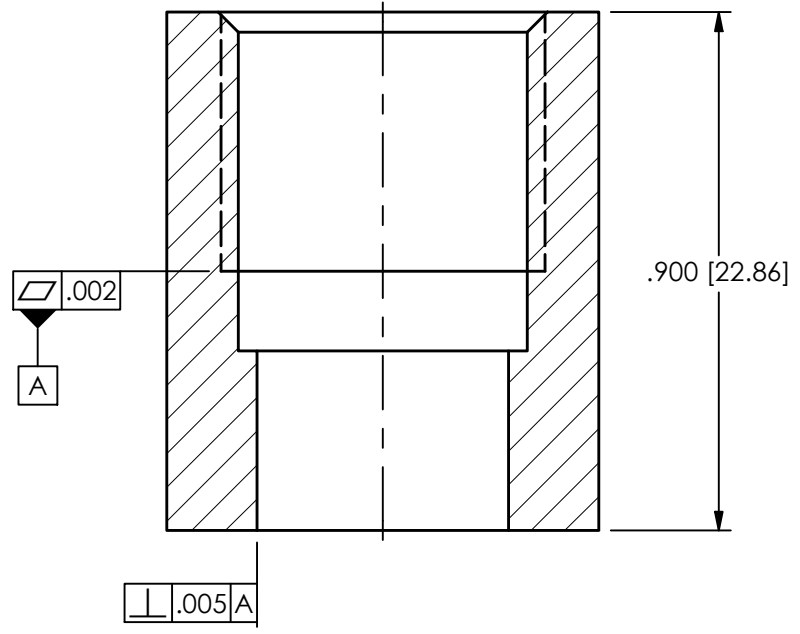
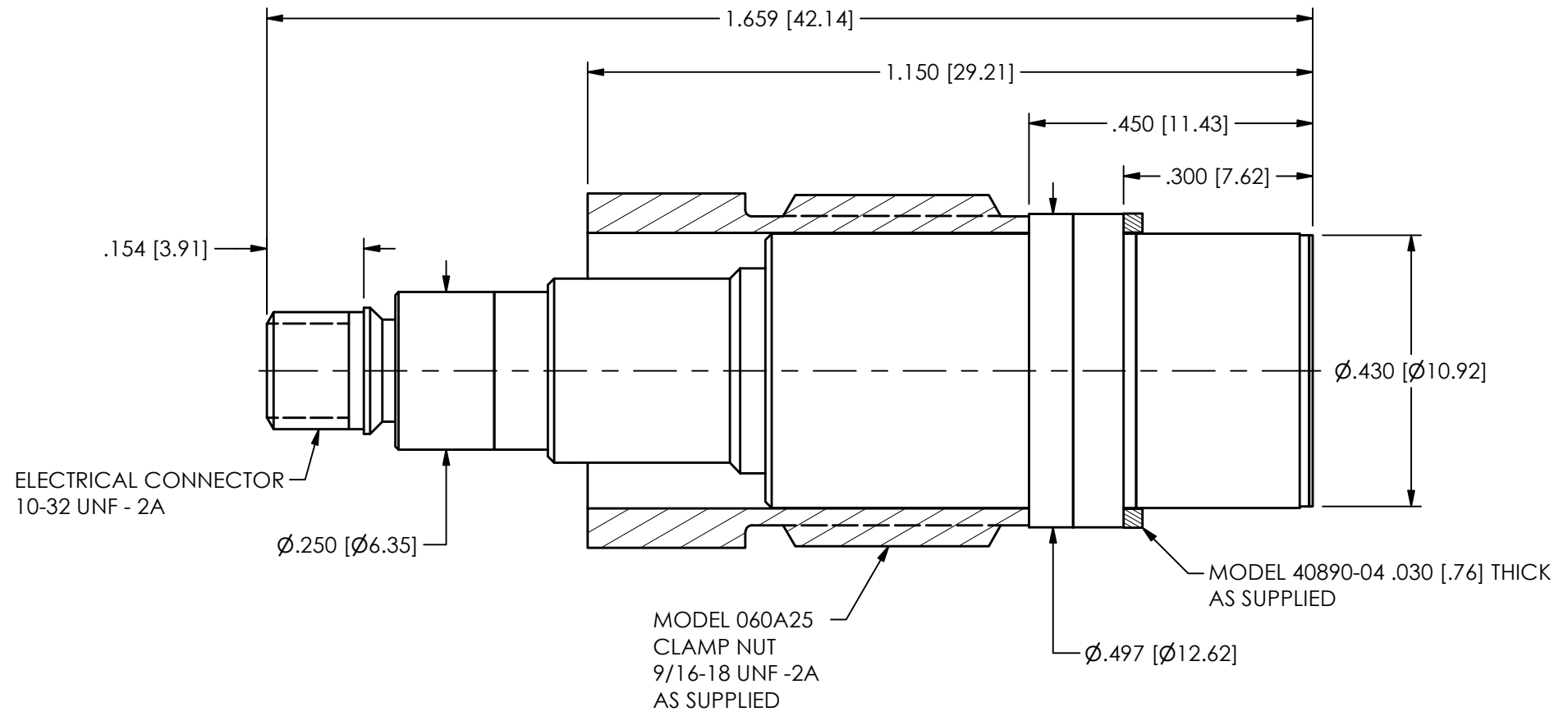
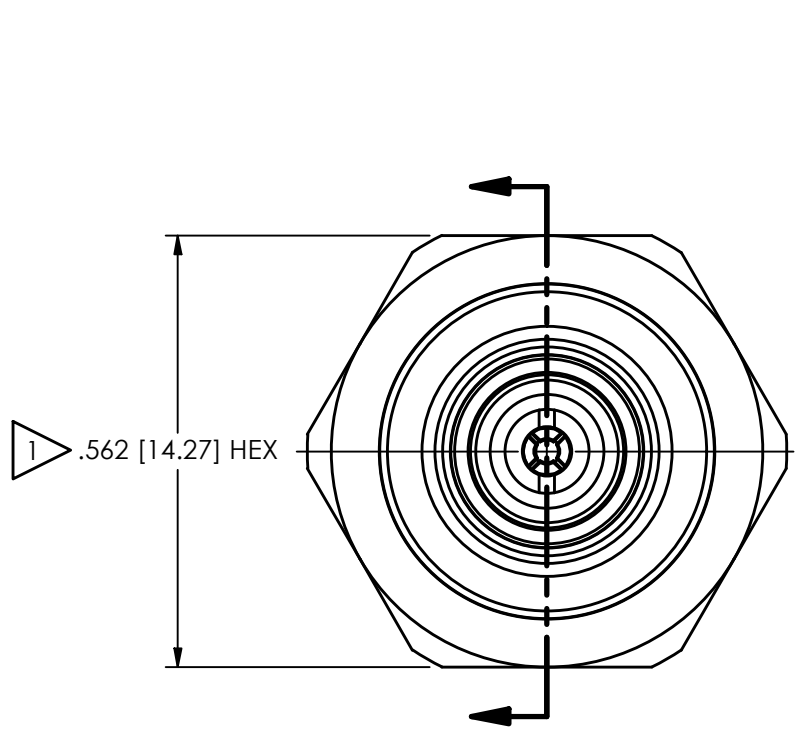


78287

PCB Piezotronics Inc. claims proprietary rights in the information disclosed hereon. Neither it nor any reproduction thereof will be disclosed to others without the written consent of PCB Piezotronics Inc.

REVISIONS		
REV	DESCRIPTION	DIN
NR	RELEASED TO DRAFTING	55557



1 MOUNTING HOLE PREPARATION:  
Ø.437 ±.001 [11.10 ±.03] THRU  
9/16-18 UNF - 2B  $\nabla$ .450 [11.43]

1 RECOMMENDED MOUNTING TORQUE: 5.0 - 6.0 FT-LBS [7 - 8 Nm]

UNLESS OTHERWISE SPECIFIED TOLERANCES ARE:		DRAWN		CHECKED		ENGINEER		PCB PIEZOTRONICS					
DIMENSIONS IN INCHES		AME	4/10/25	JDM	4/10/25	APK	4/10/25	AN AMPHENOL COMPANY					
DECIMALS XX ±.01	DIMENSIONS IN MILLIMETERS [IN BRACKETS]	TITLE						3425 WALDEN AVE. DEPEW, NY 14043					
XXX ±.005	DECIMALS X ±.03							52681			(716) 684-0001 E-MAIL: sales@pcb.com		
ANGLES ± 2 DEGREES	DECIMALS XX ±.013	INSTALLATION DRAWING MODEL 116A05 HIGH TEMPERATURE PRESSURE SENSOR						CODE IDENT. NO.	SIZE	DWG. NO.			
CABLE TOLERANCES IN ENGLISH	ANGLES ± 2 DEGREES							52681	B	78287			
1" ≤ LENGTH < 1' = +1' / - 0	CABLE TOLERANCES IN METRIC							SCALE: 5X			SHEET 1 OF 1		
1' ≤ LENGTH < 5' = +2' / - 0	2.54cm ≤ LENGTH < 30.5cm = +2.54cm / - 0												
5' ≤ LENGTH < 100' = +6' / - 0	30.5cm ≤ LENGTH < 1.5m = +5.1cm / - 0												
100' ≤ LENGTH = +1' / - 0	1.5m ≤ LENGTH < 30.5m = +15.2cm / - 0												
	30.5m ≤ LENGTH = +30.5cm / - 0												
FILLETS AND RADII .003 - .005	FILLETS AND RADII 0.07 - 0.13												