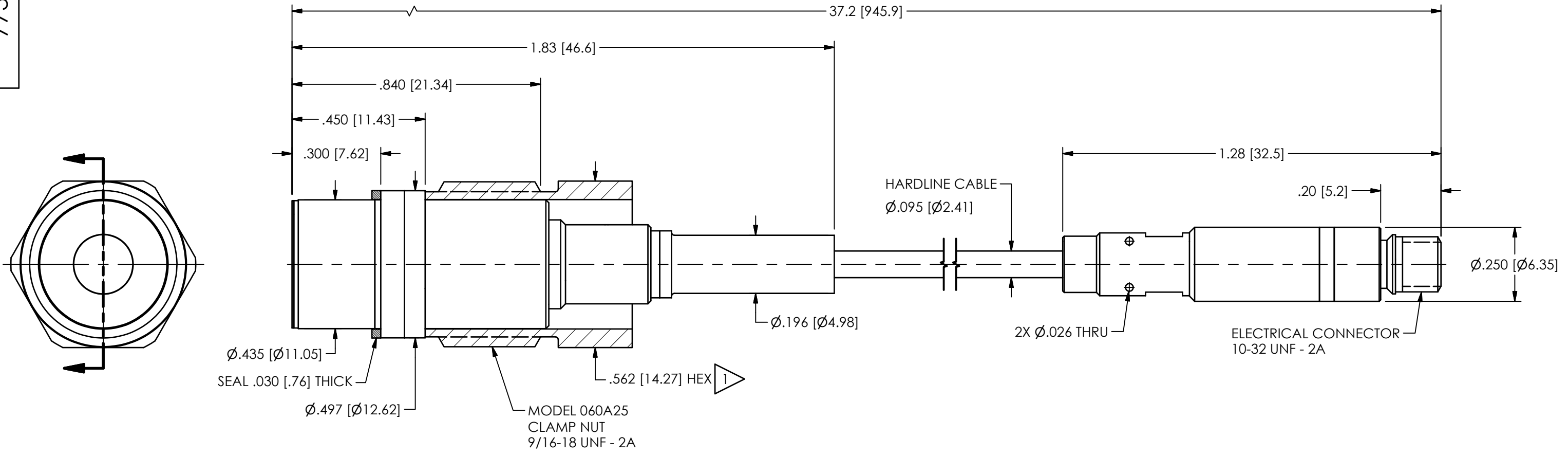


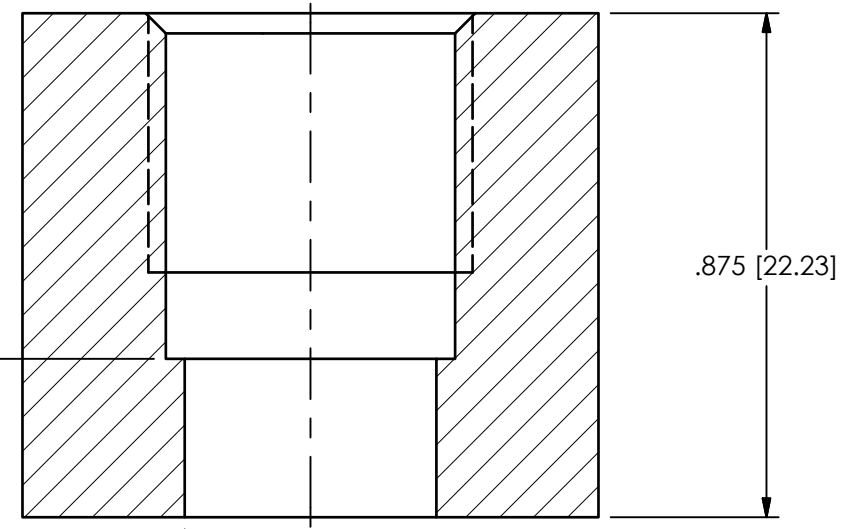
PCB Piezotronics Inc. claims proprietary rights in the information disclosed hereon. Neither it nor any reproduction thereof will be disclosed to others without the written consent of PCB Piezotronics Inc.

77376

REVISIONS		
REV	DESCRIPTION	DIN
NR	RELEASED TO DRAFTING	53712



**1** MOUNTING HOLE PREPARATION  
 $\text{Ø}.437 \pm .001$  [11.10 ± .03] THRU  
 9/16-18 UNF - 2B  $\nabla .450$  [11.43]



**1** RECOMMENDED MOUNTING TORQUE: 5.0 - 6.0 FT-LBS [7 - 8 Nm]

UNLESS OTHERWISE SPECIFIED TOLERANCES ARE:		DRAWN		CHECKED		ENGINEER	
DIMENSIONS IN INCHES		NJF	03/27/23	JJF	03/27/23	NJL	03/27/23
DECIMALS XX ±.01	DIMENSIONS IN MILLIMETERS [IN BRACKETS]	TITLE					
XXX ±.005	DECIMALS X ±0.3						
ANGLES ± 2 DEGREES	DECIMALS XX ±0.13	INSTALLATION DRAWING MODEL 176A07 HIGH TEMPERATURE PRESSURE SENSOR					
CABLE TOLERANCES IN ENGLISH	CABLE TOLERANCES IN METRIC						
1" ≤ LENGTH < 1' = +1' / - 0	2.54cm ≤ LENGTH < 30.5cm = +2.54cm / - 0						
1' ≤ LENGTH < 5' = +2" / - 0	30.5cm ≤ LENGTH < 1.5m = +5.1cm / - 0						
5' ≤ LENGTH < 100' = +6" / - 0	1.5m ≤ LENGTH < 30.5m = +15.2cm / - 0	CODE IDENT. NO. 52681		DWG. NO. 77376		SCALE: 3X SHEET 1 OF 1	
100' ≤ LENGTH = +1' / - 0	30.5m ≤ LENGTH = +30.5cm / - 0	FILLETS AND RADII .003 - .005		FILLETS AND RADII 0.07 - 0.13			

**PCB PIEZOTRONICS**  
 AN AMPHENOL COMPANY

3425 WALDEN AVE. DEPEW, NY 14043  
 (716) 684-0001 E-MAIL: sales@pcb.com