

PCB Piezotronics Inc. claims proprietary rights in the information disclosed hereon. Neither it nor any reproduction thereof will be disclosed to others without the written consent of PCB Piezotronics Inc.

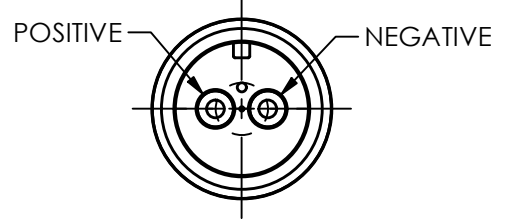
REVISIONS

REV	DESCRIPTION	DIN
C	UPDATE CONNECTOR NOTE	56437

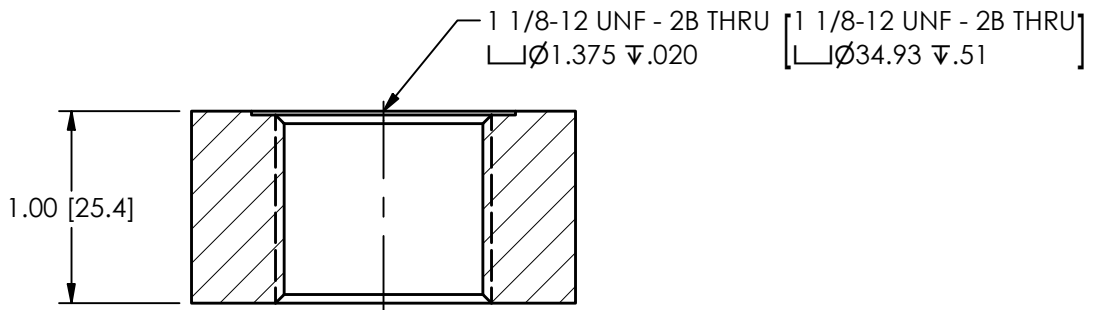
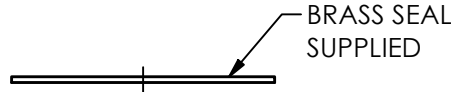
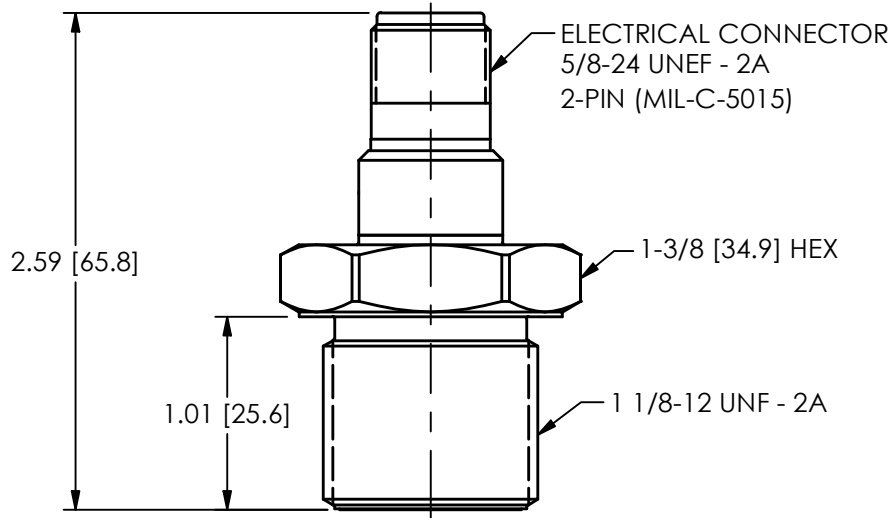
33819

RELATED DRAWING

NO MODIFICATIONS PERMITTED WITHOUT THE APPROVAL OF THE AUTHORIZED PERSON



PIN OUT
SCALE 1.5X



1.) RECOMMENDED MOUNTING TORQUE ON A 1-3/8 HEX IS: 55-60 FT/LBS [74.6-81.4 Nm]

UNLESS OTHERWISE SPECIFIED TOLERANCES ARE:		DRAWN		CHECKED		ENGINEER		PCB PIEZOTRONICS AN AMPHENOL COMPANY 3425 WALDEN AVE. DEPEW, NY 14043 (716) 684-0001 E-MAIL: sales@pcb.com		
DIMENSIONS IN INCHES	DIMENSIONS IN MILLIMETERS [IN BRACKETS]	KRG	1/29/26	JDM	1/29/26	BAM	1/29/26			
DECIMALS XX ±.01 XXX ±.005	DECIMALS X ± 0.3 XX ± 0.13	TITLE								
ANGLES ± 2 DEGREES	ANGLES ± 2 DEGREES									
CABLE TOLERANCES IN ENGLISH	CABLE TOLERANCES IN METRIC	INSTALLATION DRAWING MODEL 171XYYY SERIES						CODE IDENT. NO.	SIZE	DWG. NO.
1" ≤ LENGTH < 1' = +1"/ - 0	2.54cm ≤ LENGTH < 30.5cm = +2.54cm/ - 0							52681	A	33819
1' ≤ LENGTH < 5' = +2"/ - 0	30.5cm ≤ LENGTH < 1.5m = +5.1cm/ - 0	SCALE: FULL		SHEET 1 OF 1						
5' ≤ LENGTH < 100' = +6"/ - 0	1.5m ≤ LENGTH < 30.5m = +15.2cm/ - 0	FILLETS AND RADII .003 - .005		FILLETS AND RADII 0.07 - 0.13						
100' ≤ LENGTH = +1"/ - 0	30.5m ≤ LENGTH = +30.5cm/ - 0									