



**Model 077025-00012**

**Stationary Torque Transducer, 100 in-lb (11.3 Nm), 1/4-inch Square Drive, 4-pin PT Receptacle**

**Installation and Operating Manual**

**For assistance with the operation of this product,  
contact the PCB Piezotronics, Inc.**

**Toll-free: 716-684-0001**

**24-hour SensorLine: 716-684-0001**

**Fax: 716-684-0987**

**E-mail: [info@pcb.com](mailto:info@pcb.com)**

**Web: [www.pcb.com](http://www.pcb.com)**



	<u>ENGLISH</u>	<u>SI</u>	
<b>Performance</b>			
Measurement Range(Full Scale Capacity)	100 in-lb	11.4 Nm	
Sensitivity(output at rated capacity)(0.25%FS)	2 mV/V	2 mV/V	[2]
Non-Linearity	≤ 0.25 % FS	≤ 0.25 % FS	[3]
Hysteresis	≤ 0.25 % FS	≤ 0.25 % FS	[3]
Interchangeability	≤ 0.30 % FS	≤ 0.30 % FS	[4]
Overload Capacity	150%F.S.	150%F.S.	
Drive Size	1/4 inch Square	1/4 inch Square	[5]
<b>Environmental</b>			
Temperature Range(Operating)	0 to +200 °F	-18 to +93 °C	
Temperature Range(Compensated)	+70 to +150 °F	+21 to +66 °C	
Temperature Effect on Output(Maximum)	± 0.01 %RO/°F	± 0.018 %RO/°C	
Temperature Effect on Zero Balance(Maximum)	± 0.01 %FS/°F	± 0.018 %FS/°C	
<b>Electrical</b>			
Bridge Resistance	350 Ohm	350 Ohm	
Excitation Voltage(Recommended)	10 VDC or VAC rms	10 VDC or VAC rms	
Zero Balance	≤ 2 % FS	≤ 2 % FS	
Shunt Calibration	2 mV/V	2 mV/V	[1]
<b>Physical</b>			
Size (Diameter x Height)	4.00 in x 1.75 in	101.6 mm x 44.5 mm	[5]
Weight	4.9 lb	2.22 kg	
Mating Connector	PT06A-8-4S	PT06A-8-4S	
Connector	DT02H-8-4P	DT02H-8-4P	
<i>All specifications are at room temperature unless otherwise specified. In the interest of constant product improvement, we reserve the right to change specifications without notice.</i>			

**OPTIONAL VERSIONS**

Optional versions have identical specifications and accessories as listed for the standard model except where noted below. More than one option may be used.

**NOTES:**


[1] 2 mV/V with 43.575 kOhm precision resistor.  
 [2] Nominal.  
 [3] FS - Full Scale.  
 [4] Matched for mV/V and shunt calibration.  
 [5] See Drawing 66207 for Complete Dimensions

**SUPPLIED ACCESSORIES:**  
 Model 7122R-04352A PRECISION CAL RESISTOR 43.575 kOhm

**OPTIONAL ACCESSORIES:**  
 Model 080920-01000 Model 920 Portable Digital Peak Meter for torque, torque-angle or load measurement; Click-Wrench calc feature, w/battery charger, instruction manual & shoulder strap  
 Model 097000-34149 INTERCONNECT CABLE  
 Model 4242R-000600 MATING CONNECTOR PT06A-8-4S

Entered: LK	Engineer: PE	Sales: DM	Approved: JSD	Spec Number:
Date: 12/19/2016	Date: 12/19/2016	Date: 12/19/2016	Date: 12/19/2016	<b>66208</b>

**PCB Load & Torque**  
 24350 Indoplex Circle  
 Farmington Hills, MI 48335  
 UNITED STATES  
 Phone: 866-684-7107  
 Fax: 716-684-0987  
 E-Mail: [ltinfo@pcbloadtorque.com](mailto:ltinfo@pcbloadtorque.com)  
 Web site: <http://www.pcbloadtorque.com>

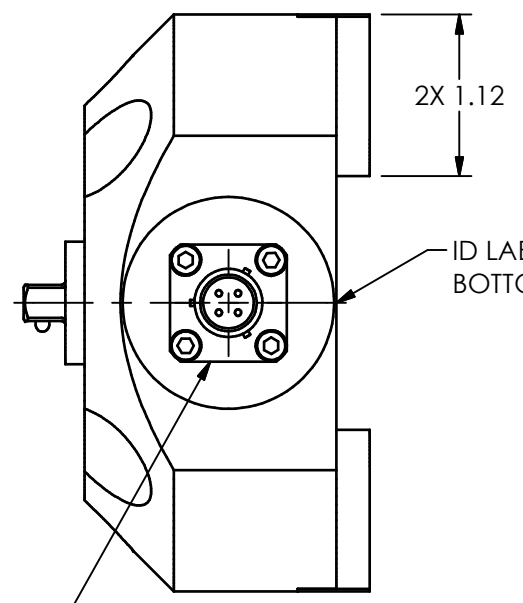
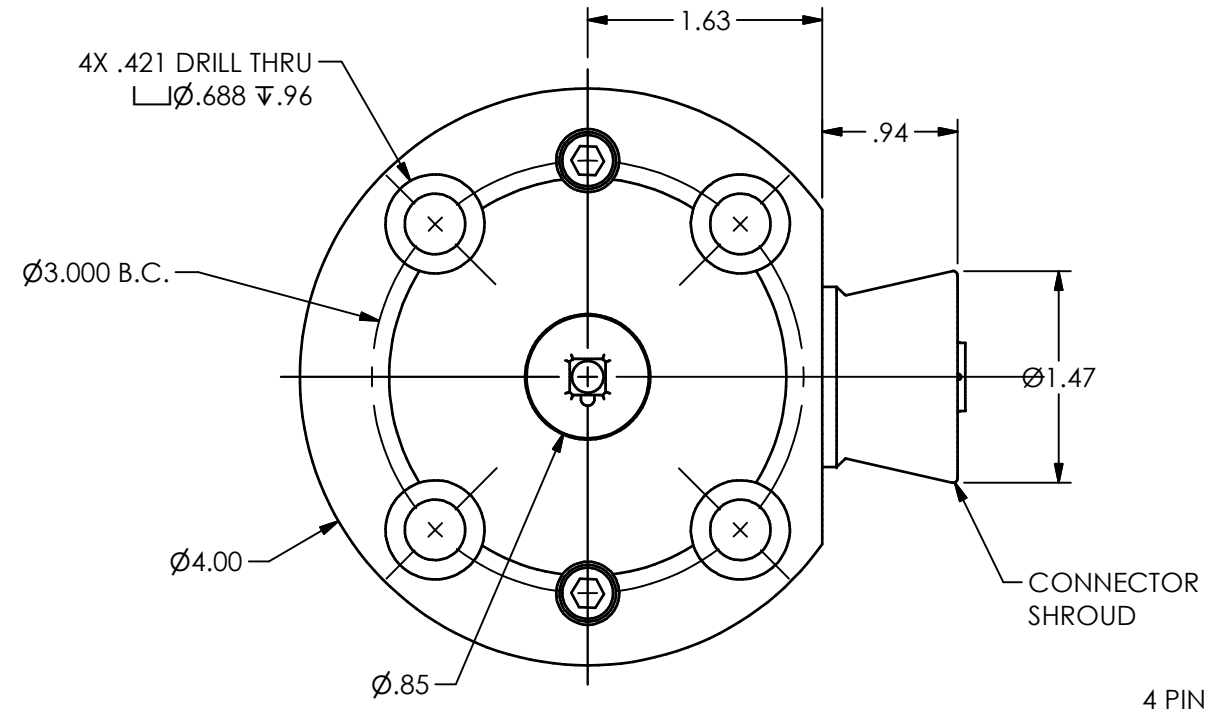


**PCB LOAD & TORQUE**  
 A PCB PIEZOTRONICS DIV.

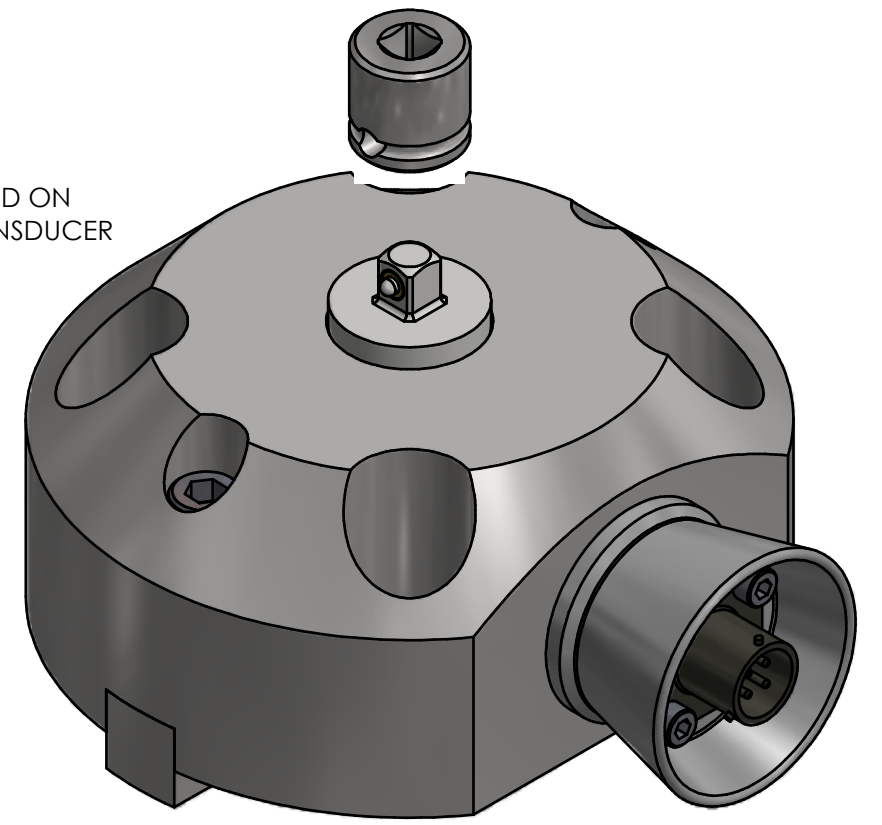
PCB Load & Torque (A Division of PCB Piezotronics, Inc.) claims proprietary rights in the information disclosed hereon. Neither it nor any reproduction thereof will be disclosed to others without the written consent of PCB Load and Torque.

REVISIONS		
REV	DESCRIPTION	ECO
NR	RELEASED FOR PRODUCTION - 01.05.17, PTE	46257

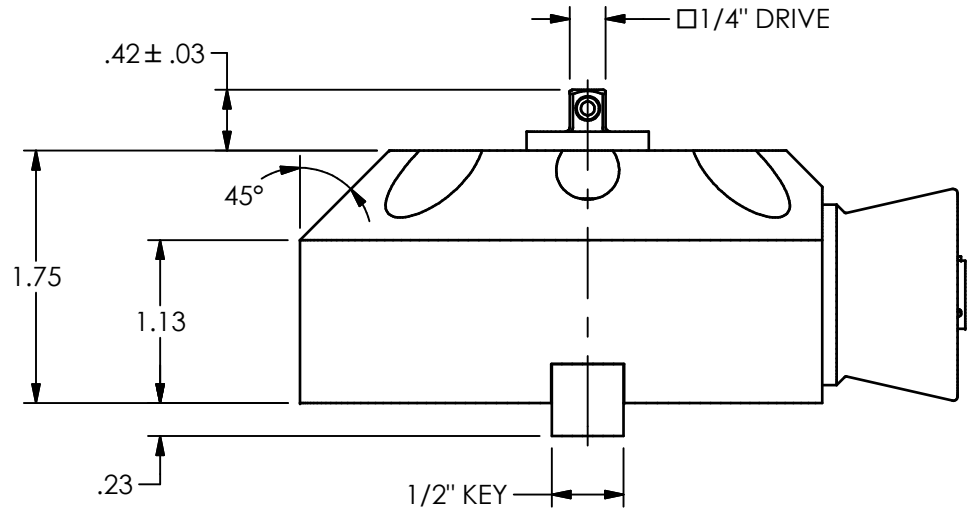
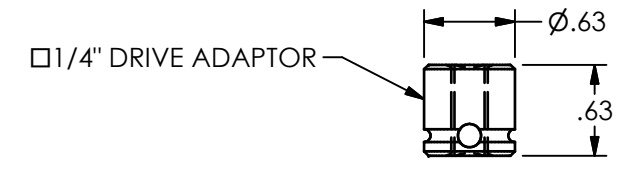
66207



4 PIN RECEPTACLE  
(BENDIX PTO2A-8-4P OR EQUIV.)  
WIRING CODE:  
PIN A +EXC.  
PIN B -EXC.  
PIN C +SIG.  
PIN D -SIG.



ISO VIEW  
SCALE 1 : 1



UNLESS OTHERWISE SPECIFIED TOLERANCES ARE:		DRAWN		CHECKED		ENGINEER		 A PCB GROUP COMPANY	
DIMENSIONS IN INCHES	DIMENSIONS IN MILLIMETERS [ IN BRACKETS ]	PTE	12.05.16	JSD	12.08.16	PTE	12.05.16		24350 Indoplex Circle, Farmington Hills, MI 48335 (248) 888-8260 E-MAIL: linfo@pcb.com
DECIMALS XX ±.01 XXX ±.005	DECIMALS X ±.3 XX ±.13	TITLE OUTLINE DRAWING STATIONARY TORQUE TRANSDUCER 1/4" SQ. DRIVE (STAT-DUCER)						DWG. NO.	66207
ANGLES ± .5 DEGREES	ANGLES ± .5 DEGREES							SCALE:	3/4
FILLETS AND RADII .015 MAX	FILLETS AND RADII 0.38 MAX								