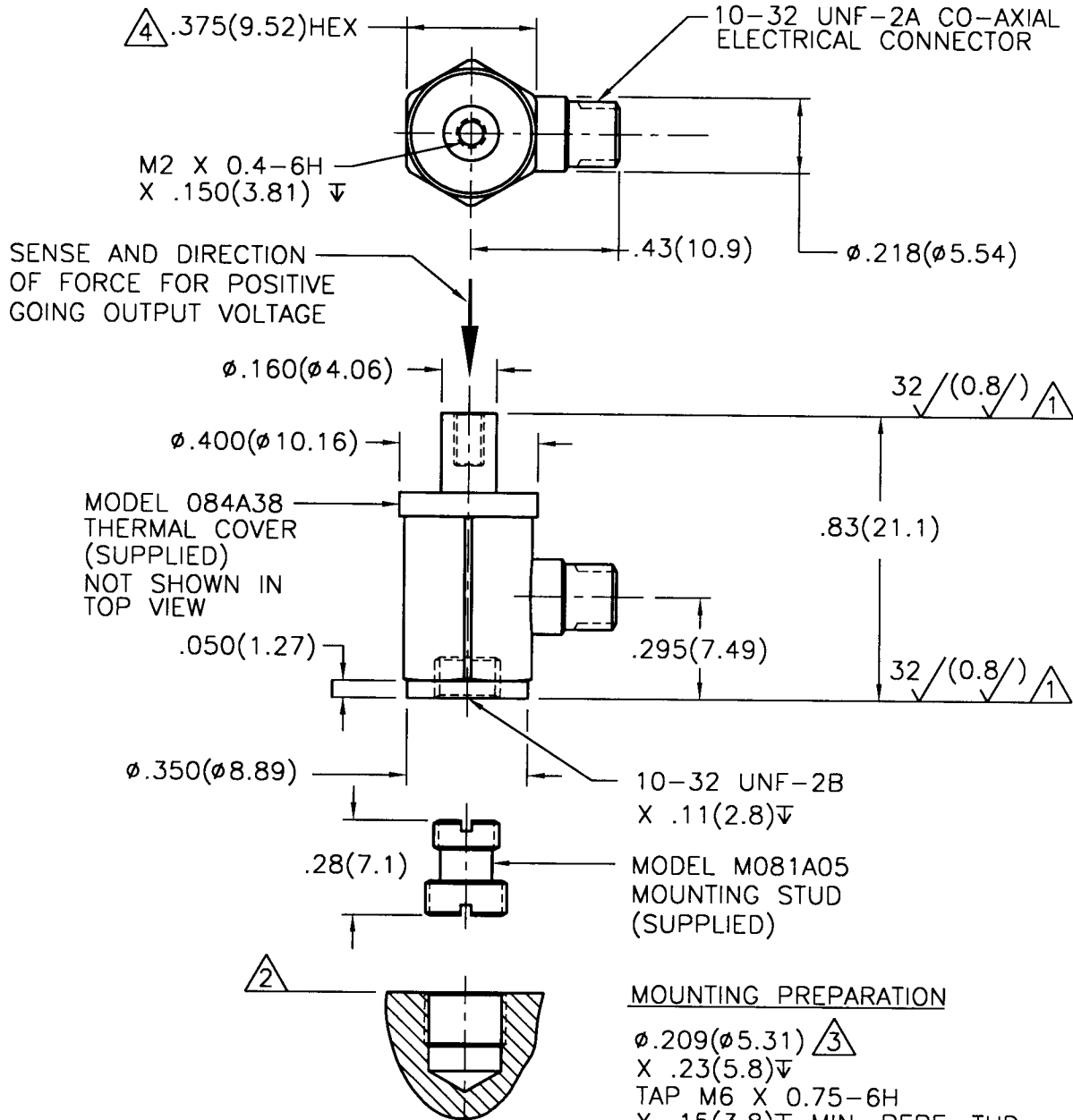


6691

PCB Piezotronics Inc. claims proprietary rights in the information disclosed hereon. Neither it nor any reproduction thereof will be disclosed to others without written consent of PCB Piezotronics Inc.

| APPLICATION | | |
|-------------|---------|-----|
| NEXT ASS'Y | USED ON | VAR |
| | | |

| REVISIONS | | | | |
|-----------|-----------------|------|--------|--------------------|
| REV | DESCRIPTION | ECN | DATE | APP'D |
| C | REVISED PER ECN | 9928 | 1/5/99 | <i>[Signature]</i> |



MOUNTING PREPARATION
 $\phi .209(\phi 5.31)$ $\triangle 3$
 X .23(5.8) ∇
 TAP M6 X 0.75-6H
 X .15(3.8) ∇ MIN. PERF. THD.

- $\triangle 4$ MOUNTING TORQUE ON .375(9.52) HEX 15-20 INCH POUNDS (169-226 NEWTON CENTIMETERS).
- $\triangle 3$ DRILL PERPENDICULAR TO MOUNTING SURFACE WITHIN $\pm 1^\circ$.
- $\triangle 2$ MOUNTING SURFACE UNDER LOAD CELL MUST BE FLAT WITHIN .001(0.03) TIR, WITH AT LEAST $63\sqrt{(1.6\sqrt{)}}$ FINISH.
- $\triangle 1$ THESE SURFACES FLAT AND PARALLEL WITHIN .001(0.03) TIR.

| | | | | | | |
|---|--|--|-------------------------|--|--|---|
| UNLESS SPECIFIED TOLERANCES | | DRAWN <i>MDO</i> 1/5/99 | | MFG <i>JRS</i> 1/5/99 | | 3425 WALDEN AVE. DEPEW, NY 14043 (716) 684-0001 EMAIL: SALES@PCB.COM |
| DIMENSIONS IN INCHES | DIMENSIONS IN MILLIMETERS (IN PARENTHESIS) | CHK'D <i>DM</i> 1/11/99 | ENGR <i>ZNR</i> 1/11/99 | APP'D <i>PL</i> 1/15/99 <i>SR</i> <i>SGC</i> 1/15/99 | | |
| DECIMALS XX $\pm .01$ XXX $\pm .005$ | DECIMALS XX ± 0.3 XXX ± 0.13 | TITLE INSTALLATION DRAWING MODEL M209C11 & M209C12 LOAD CELL BUILT IN AMPLIFIER | | | | CODE IDENT. NO. 52681 |
| ANGLES ± 2 DEGREES | ANGLES ± 2 DEGREES | DWG. NO. 6691 | | | | SCALE: 2X |
| FILLETS AND RADII .003 - .005 | FILLETS AND RADII (0.07 - 0.13) | SHEET 1 OF 1 | | | | |
| DD011 REV. B 03/13/98 | | | | | | |