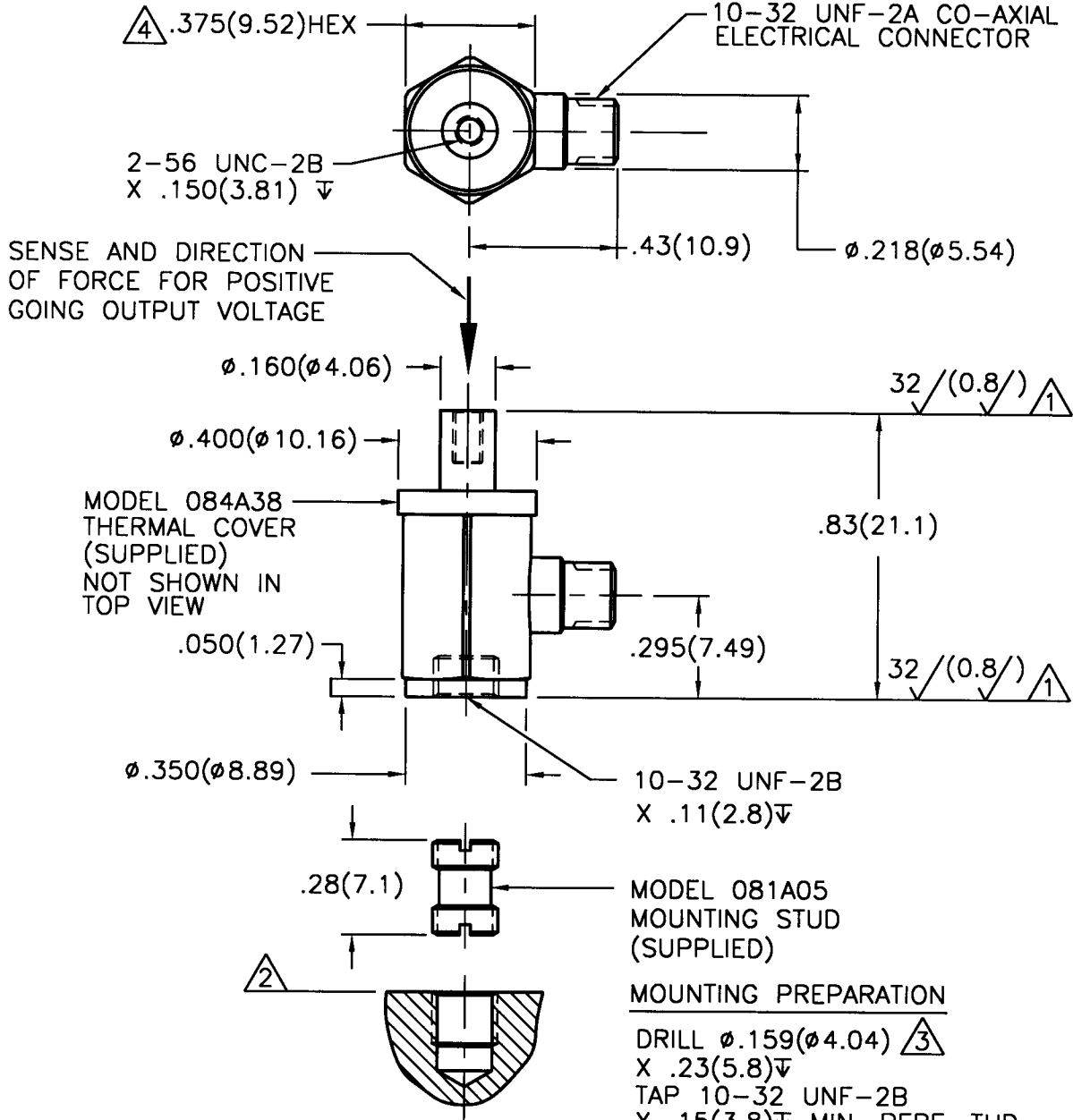


6690

PCB Piezotronics Inc. claims proprietary rights in the information disclosed hereon. Neither it nor any reproduction thereof will be disclosed to others without written consent of PCB Piezotronics Inc.

APPLICATION		
NEXT ASS'Y	USED ON	VAR

REVISIONS				
REV	DESCRIPTION	ECN	DATE	APP'D
A	REVISED PER ECN	9019	4/20/98	DMH/qc



SENSE AND DIRECTION OF FORCE FOR POSITIVE GOING OUTPUT VOLTAGE

MOUNTING PREPARATION
 DRILL ϕ .159(ϕ 4.04) \triangle 3
 X .23(5.8) ∇
 TAP 10-32 UNF-2B
 X .15(3.8) ∇ MIN. PERF. THD.

- \triangle 4 MOUNTING TORQUE ON .375(9.52) HEX 15-20 INCH POUNDS (169-226 NEWTON CENTIMETERS).
- \triangle 3 DRILL PERPENDICULAR TO MOUNTING SURFACE WITHIN $\pm 1^\circ$.
- \triangle 2 MOUNTING SURFACE UNDER LOAD CELL MUST BE FLAT WITHIN .001(0.03) TIR, WITH AT LEAST 63 \sqrt (1.6 \sqrt) FINISH.
- \triangle 1 THESE SURFACES FLAT AND PARALLEL WITHIN .001(0.03) TIR.

UNLESS SPECIFIED TOLERANCES		DRAWN	MAD	4/20/98	MFG	JBS	4/20/98	 3425 WALDEN AVE. DEPEW, NY 14043 (716) 684-0001 EMAIL: SALES@PCB.COM
DIMENSIONS IN INCHES	DIMENSIONS IN MILLIMETERS (IN PARENTHESIS)	CHK'D	DM	4/20/98	ENGR	EAR	4/21/98	
DECIMALS XX \pm .01 XXX \pm .005	DECIMALS XX \pm 0.3 XXX \pm 0.13	APP'D	ACT	4-21-98	SALES	EAR	4/21/98	
ANGLES \pm 2 DEGREES	ANGLES \pm 2 DEGREES	TITLE		INSTALLATION DRAWING		CODE IDENT. NO.	52681	
FILLETS AND RADII .003 - .005	FILLETS AND RADII (0.07 - 0.13)	MODEL 209C11 & 209C12 LOAD CELL BUILT IN AMPLIFIER				DWG. NO.		6690
D0011 REV. B 03/13/98		SCALE: 2X				SHEET 1 OF 1		