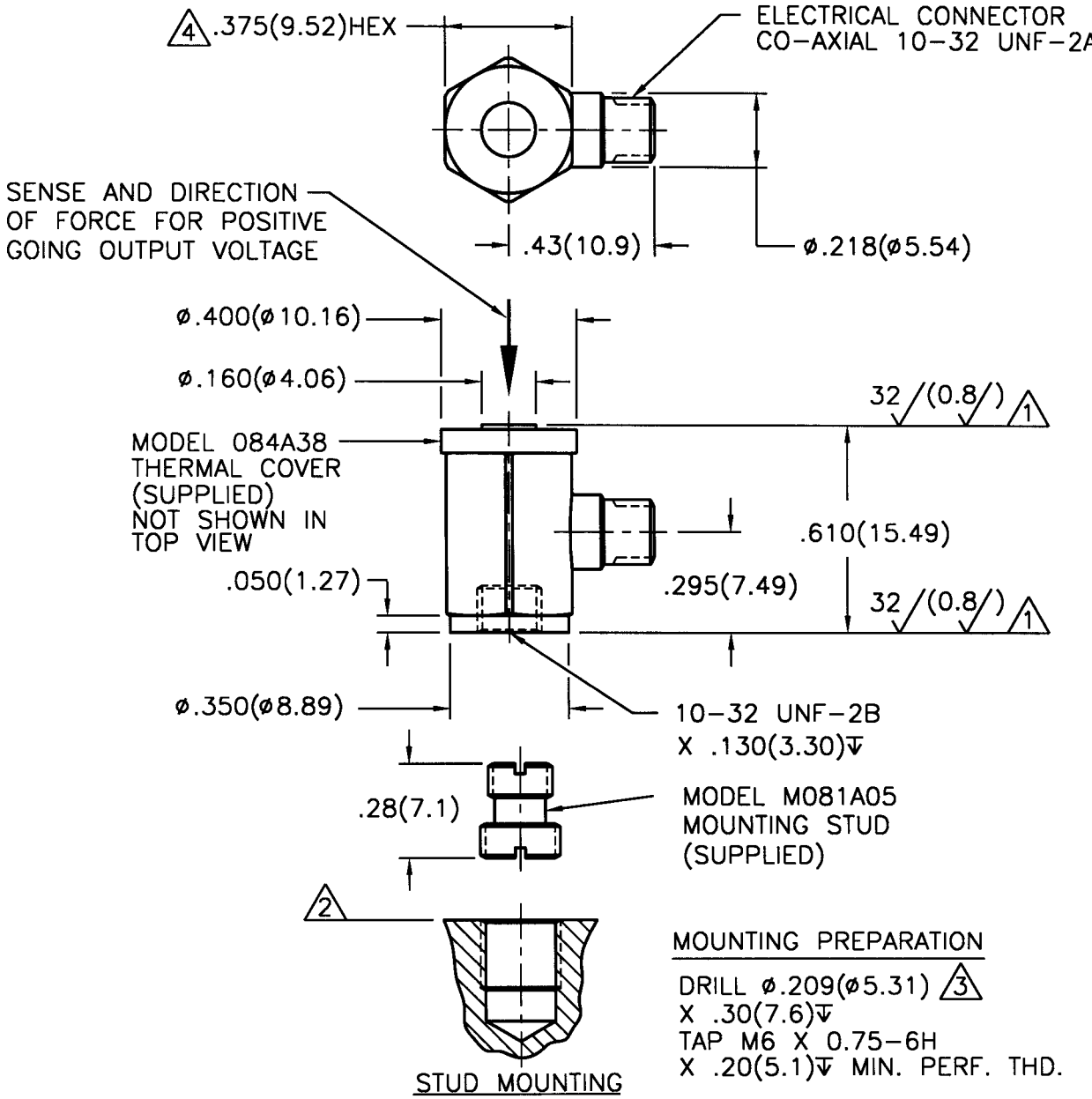


6330

PCB Piezotronics Inc. claims proprietary rights in the information disclosed herein. Neither it nor any reproduction thereof will be disclosed to others without written consent of PCB Piezotronics Inc.

APPLICATION		
NEXT ASS'Y	USED ON	VAR

REVISIONS				
REV	DESCRIPTION	ECN	DATE	APP'D
B	REVISED PER ECR	9019	4/17/98	DM4/98



- $\Delta 4$ MOUNTING TORQUE ON $.375(9.52)$ HEX 15-20 INCH POUNDS (169-226 NEWTON CENTIMETERS).
- $\Delta 3$ DRILL PERPENDICULAR TO MOUNTING SURFACE WITHIN $\pm 1^\circ$.
- $\Delta 2$ MOUNTING SURFACE UNDER LOAD CELL MUST BE FLAT WITHIN $.001(0.03)$ TIR, WITH AT LEAST $63\sqrt{(1.6\sqrt{)}}$ FINISH.
- $\Delta 1$ THESE SURFACES FLAT AND PARALLEL WITHIN $.001(0.03)$ TIR.

UNLESS SPECIFIED TOLERANCES		DRAWN	MDO 4/20/98	MFG	JBS 4/20/98	 3425 WALDEN AVE. DEPEW, NY 14043 (716) 684-0001 EMAIL: SALES@PCB.COM
DIMENSIONS IN INCHES	DIMENSIONS IN MILLIMETERS (IN PARENTHESIS)	CHK'D	DSM 4/20/98	ENGR	ZAF 4/21/98	
DECIMALS XX $\pm .01$ XXX $\pm .005$	DECIMALS XX ± 0.3 XXX ± 0.13	APP'D	ACT 4/22/98	Sub	RAA 4/21/98	CODE IDENT. NO. 52681
ANGLES ± 2 DEGREES	ANGLES ± 2 DEGREES	TITLE				OWG. NO.
FILLET AND RADII .003 - .005	FILLET AND RADII (0.07 - 0.13)	INSTALLATION DRAWING MODEL M209C01 & M209C02 LOAD CELL BUILT IN AMPLIFIER				6330
DD011 REV. B 03/13/98		SCALE: 2X				SHEET 1 OF 1