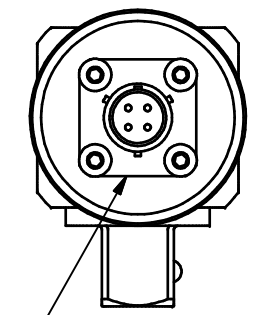
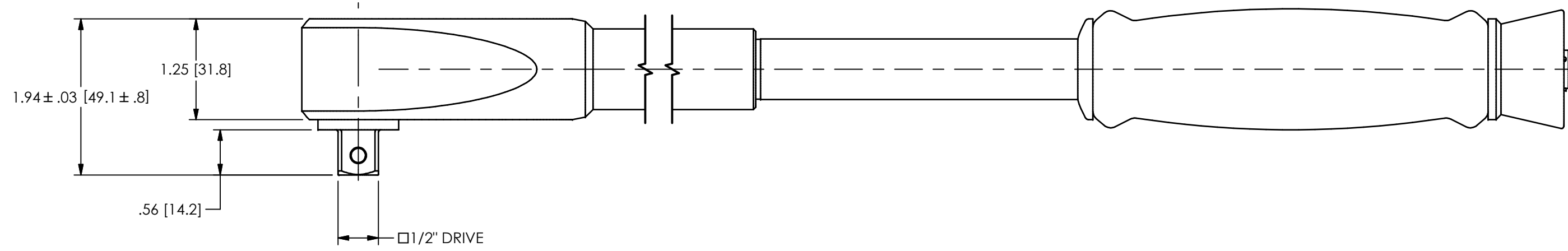
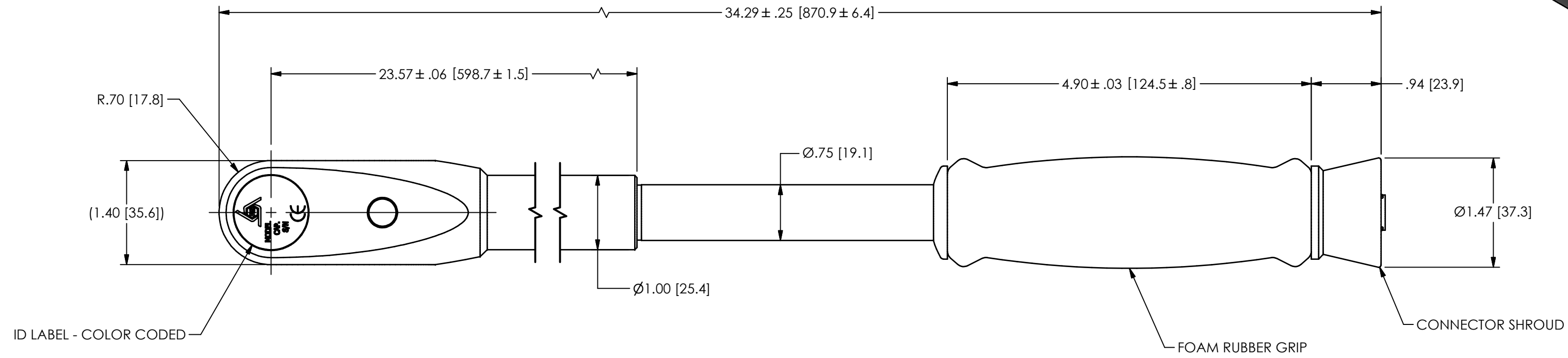
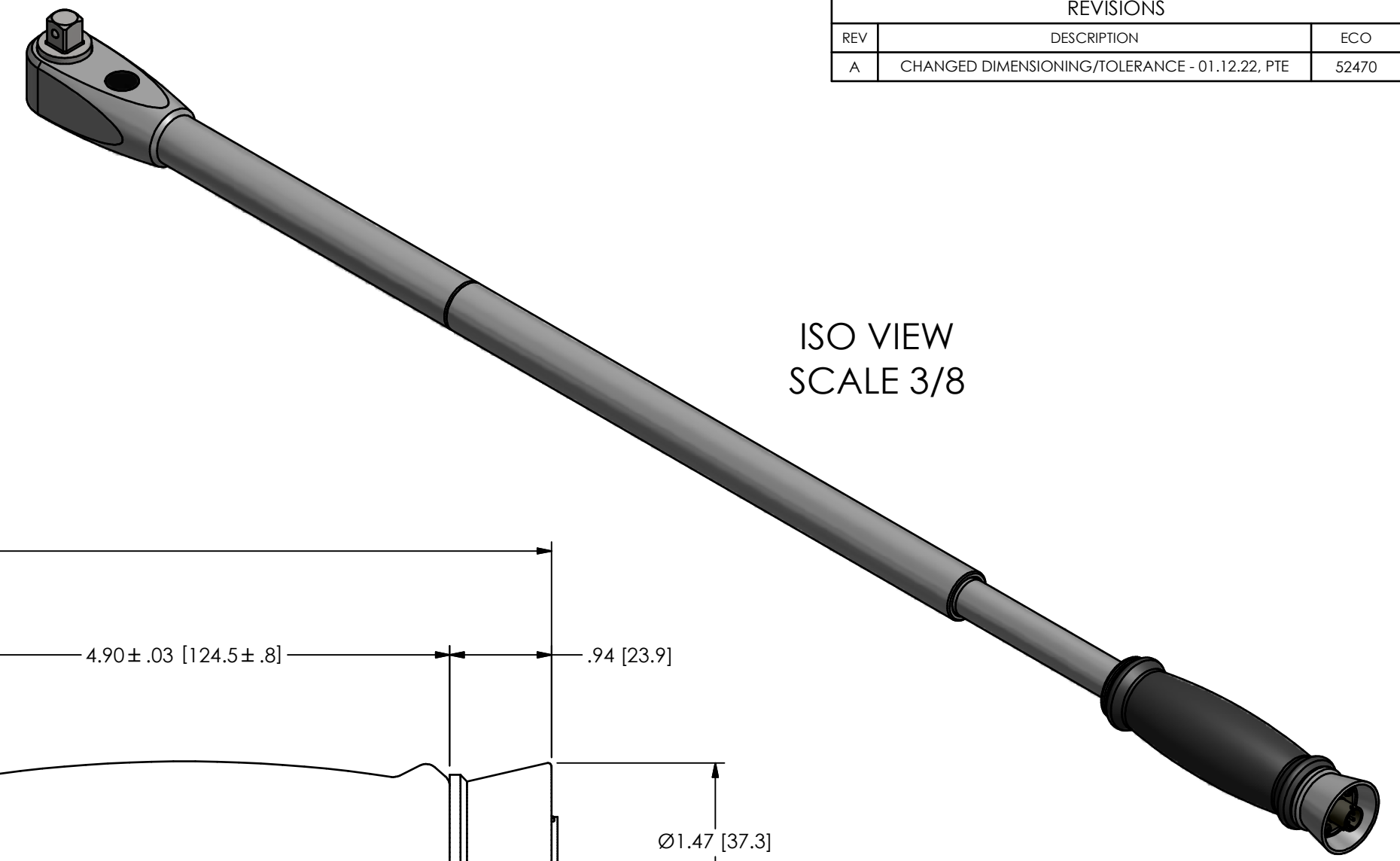


PCB Load & Torque (A Division of PCB Piezotronics, Inc.)
 claims proprietary rights in the information disclosed herein.
 Neither it nor any reproduction thereof will be disclosed to
 others without the written consent of PCB Load and Torque.

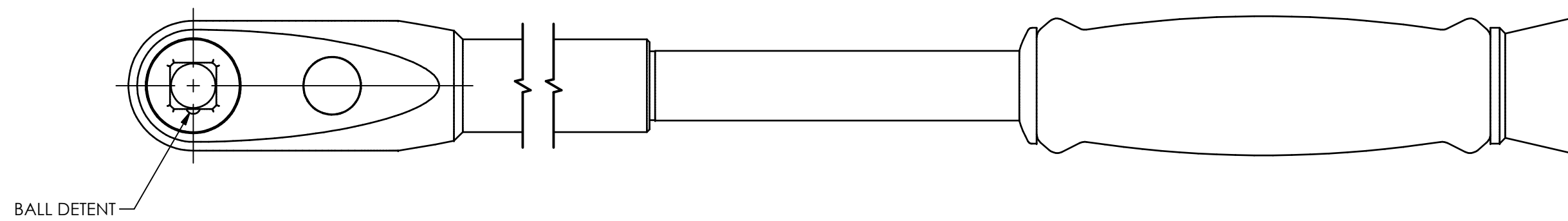
52106

REVISIONS		
REV	DESCRIPTION	ECO
A	CHANGED DIMENSIONING/TOLERANCE - 01.12.22, PTE	52470

ISO VIEW
 SCALE 3/8



PUSH/TURN RECEPTACLE
 (PT02H-8-4P OR EQUIV.)
 WIRING CODE:
 PIN A +EXC.
 PIN B -EXC.
 PIN C +SIG.
 PIN D -SIG.



UNLESS OTHERWISE SPECIFIED TOLERANCES ARE:		DRAWN	CHECKED	ENGINEER		 <small>24350 Indoplex Circle, Farmington Hills, MI 48335 (248) 888-8260 E-MAIL: llinfo@pcb.com</small>		
DIMENSIONS IN INCHES	DIMENSIONS IN MILLIMETERS [IN BRACKETS]	PTE	01.23.17	JSD	01.23.17		PTE	01.23.17
DECIMALS XX ±.01 XXX ±.005	DECIMALS X ± 0.3 XX ± 0.13	TITLE OUTLINE DRAWING 1/2" SQ. DRIVE, HI CAP. (027250-04XXX) HAND TORQUE WRENCH						DWG. NO. 52106
ANGLES ± .5 DEGREES	ANGLES ± .5 DEGREES							SCALE: 3/4
FILLETS AND RADII .015 MAX	FILLETS AND RADII 0.38 MAX							