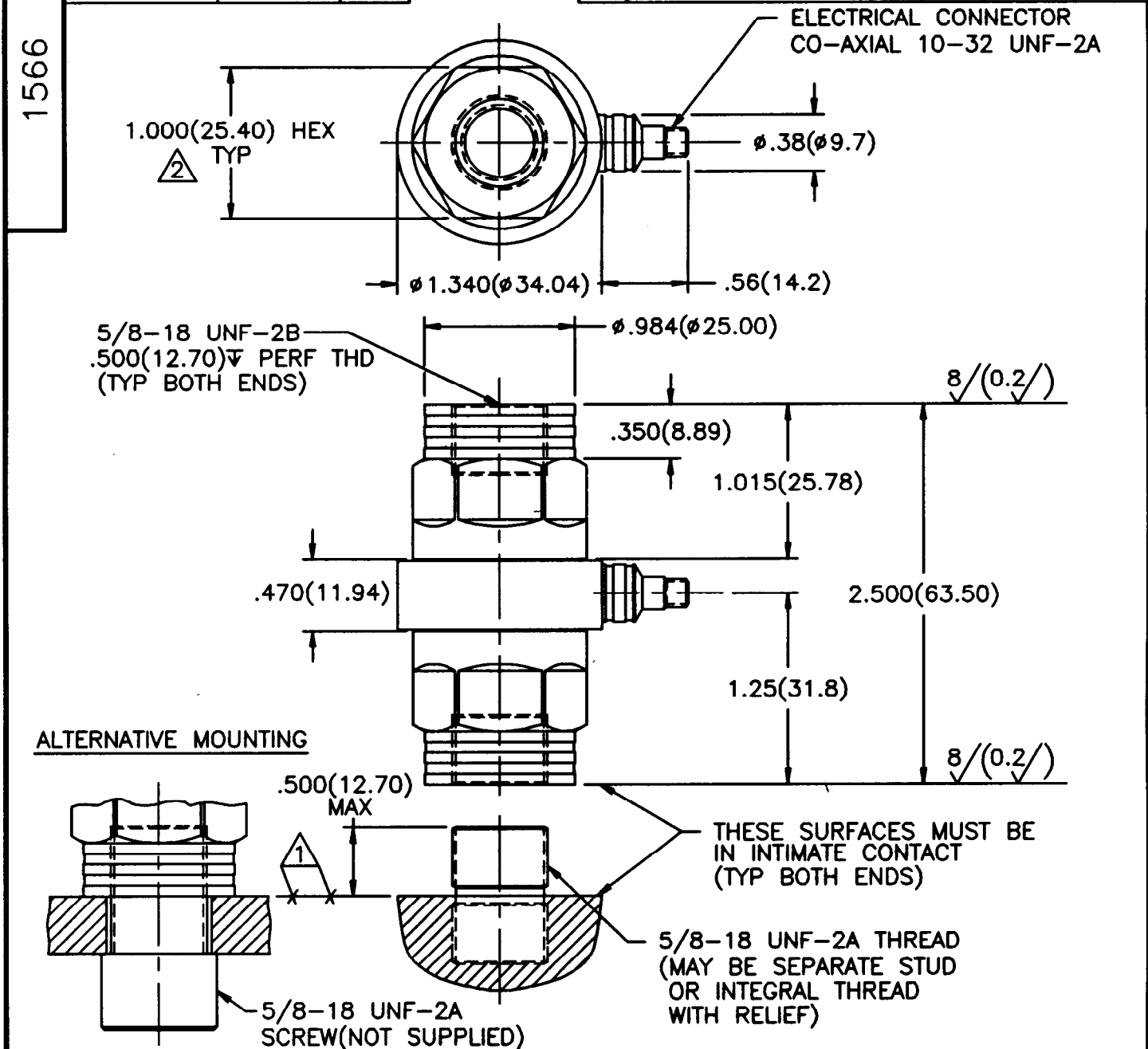


APPLICATION			REVISIONS				
NEXT ASS'Y	USED ON	VAR	REV	DESCRIPTION	ECN	DATE	APP'D



- 4.) COMPRESSIVE FORCE RESULTS IN NEGATIVE GOING OUTPUT CHARGE.
- 3.) EPOXY OR LOCTITE MAY BE USED ON THREADS TO LOCK FORCE LINK IN PLACE.
- ② RECOMMENDED MOUNTING TORQUE ON 1.000(25.40) HEX, 10-15 FOOT POUNDS (14-20 NEWTON METERS).
- ① MOUNTING SURFACES MUST BE FLAT TO WITHIN .001(0.03) TIR WITH A MIN $6\sqrt[3]{(1.6\sqrt{1})}$ FIN.

UNLESS SPECIFIED TOLERANCES		DRAWN	CHK'D	APP'D	TITLE	PCB PIEZOTRONICS, INC.	
DIMENSIONS IN INCHES	DIMENSIONS IN MILLIMETERS (IN PARENTHESES)	KAB	DM		INSTALLATION DRAWING	3426 WALDEN AVE. DEPEW, NEW YORK 14043	
DECIMALS XX ± .01	DECIMALS X ± 0.3	8/1/94	8/17/94		MODEL 234B	PHONE: (716) 884-0001	
XXX ± .005	XX ± 0.13				HERMETIC SEALED FORCE LINK	CODE	DWG. NO.
ANGLES ± 2 DEGREES	ANGLES ± 2 DEGREES					IDENT. NO.	1566
FILLETS AND RADN .003 - .005 (0.07 - 0.13)						52681	SCALE: FULL SHEET 1 OF 1