

12082

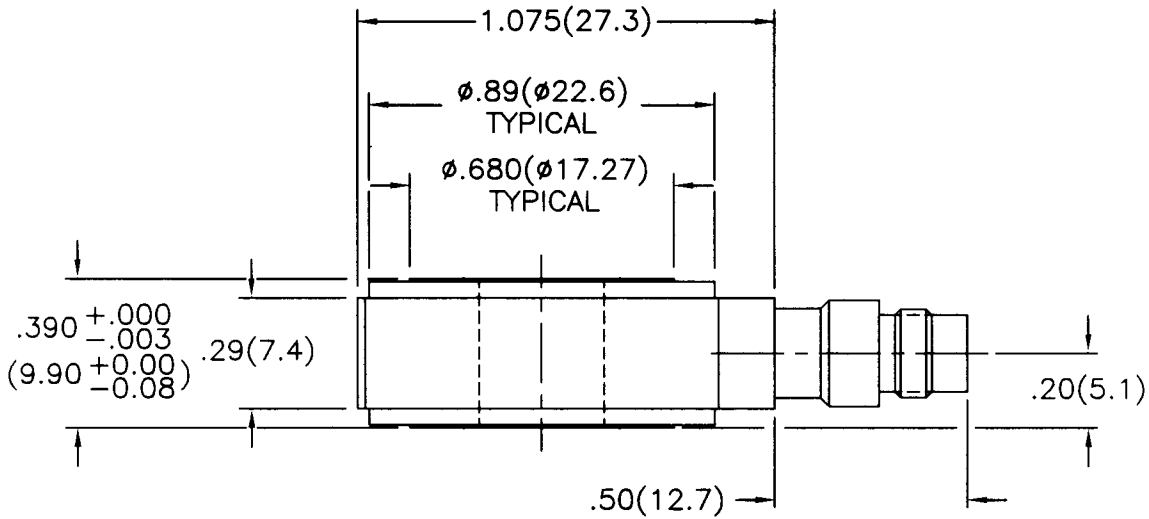
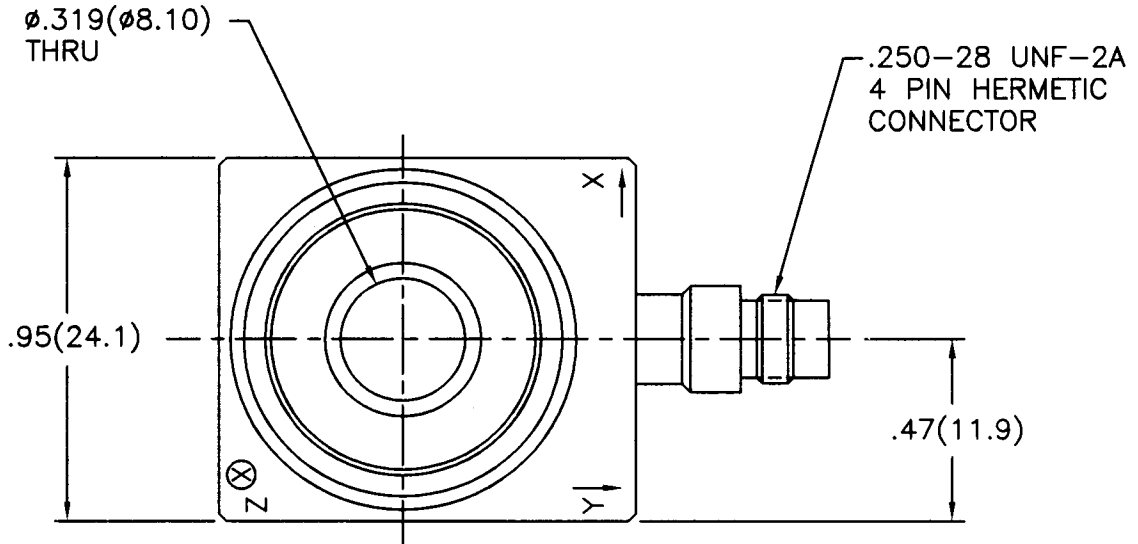
PCB Piezotronics Inc. claims proprietary rights in the information disclosed hereon. Neither it nor any reproduction thereof will be disclosed to others without written consent of PCB Piezotronics Inc.

APPLICATION

NEXT ASS'Y	USED ON	VAR

REVISIONS

REV	DESCRIPTION	ECN	DATE	APP'D
C	REVISED PER ECN	15072	3/22/02	DM 4/2



1.) SEE SHEETS 2 AND 3 FOR STANDARD AND METRIC MOUNTING INSTRUCTIONS.

UNLESS SPECIFIED TOLERANCES		DRAWN	JDM	3-25-02	MFG	JBS	4/6/02	 3425 WALDEN AVE. DEPEW, NY 14043 (716) 684-0001 EMAIL: SALES@PCB.COM
DIMENSIONS IN INCHES	DIMENSIONS IN MILLIMETERS (IN PARENTHESIS)	CHK'D	DM	3/26/02	ENGR	JAB	3/26/02	
DECIMALS XX ±.01 XXX ±.005	DECIMALS XX ±0.3 XXX ±0.13	APP'D	mg2	3/26/02	SALES	Jgm	3/26/02	
ANGLES ±2 DEGREES	ANGLES ±2 DEGREES	TITLE						CODE IDENT. NO.
FILLETS AND RADII .003 - .005	FILLETS AND RADII (0.07 - 0.13)	INSTALLATION DRAWING MODEL (M)260A01 ICP TRIAxIAL FORCE SENSOR						DWG. NO. 12082
DD011 REV. B 03/13/98								SCALE: 2X
							SHEET 1 OF 3	

12082

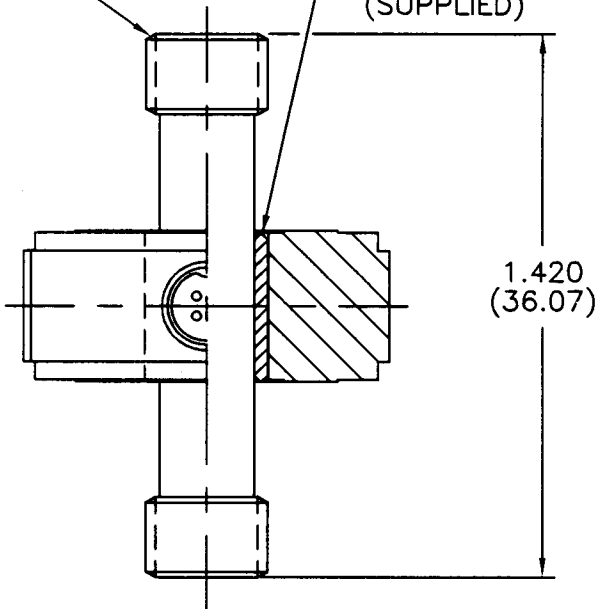
PCB Piezotronics Inc. claims proprietary rights in the information disclosed hereon. Neither it nor any reproduction thereof will be disclosed to others without written consent of PCB Piezotronics Inc.

APPLICATION		
NEXT ASS'Y	USED ON	VAR

REVISIONS				
REV	DESCRIPTION	ECN	DATE	APP'D
-SEE SHEET ONE-				

MODEL 081A70  
STUD  
5/16-24 UNF-2A  
TYP EACH END  
(SUPPLIED)

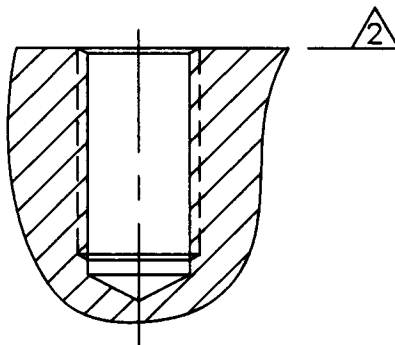
MODEL 083A10  
PILOT BUSHING  
(SUPPLIED)



TYP STUD MOUNTING  
INSTALLATION

MOUNTING HOLE PREPARATION:

DRILL  $\phi .272(\phi 6.91)$   $\triangle 3$   
X .655(16.64)  $\nabla$   
TAP 5/16-24 UNF-2B  
X .555(14.10)  $\nabla$   
PERFECT THREAD



4.) SEE MANUAL FOR PRELOAD INSTRUCTIONS.

$\triangle 3$  DRILL PERPENDICULAR TO MOUNTING SURFACE TO WITHIN  $\pm 1^\circ$ .

$\triangle 2$  MOUNTING SURFACE UNDER FORCE RING MUST BE FLAT WITHIN .001(0.03) TIR WITH A 32/ (0.8/) FINISH.

UNLESS SPECIFIED TOLERANCES	
DIMENSIONS IN INCHES	DIMENSIONS IN MILLIMETERS (IN PARENTHESIS)
DECIMALS XX $\pm .01$ XXX $\pm .005$	DECIMALS XX $\pm 0.3$ XXX $\pm 0.13$
ANGLES $\pm 2$ DEGREES	ANGLES $\pm 2$ DEGREES
FILLETS AND RADII .003 - .005	FILLETS AND RADII (0.07 - 0.13)

DRAWN	JDM	4-9-02	MFG	BS	4/10/02
CHK'D	DM	4/11/02	ENGR	LAB	4/11/02
APP'D	gjk	4/11/02	SALES	gjm	4/11/02
TITLE INSTALLATION DRAWING MODEL 260A01 ICP TRIAXIAL FORCE SENSOR					

**PCB PIEZOTRONICS**  
3425 WALDEN AVE. DEPEW, NY 14043  
(716) 684-0001 EMAIL: SALES@PCB.COM

CODE IDENT. NO. 52681	DWG. NO. 12082
SCALE: 2X	
SHEET 2 OF 3	

12082

PCB Piezotronics Inc. claims proprietary rights in the information disclosed hereon. Neither it nor any reproduction thereof will be disclosed to others without written consent of PCB Piezotronics Inc.

APPLICATION

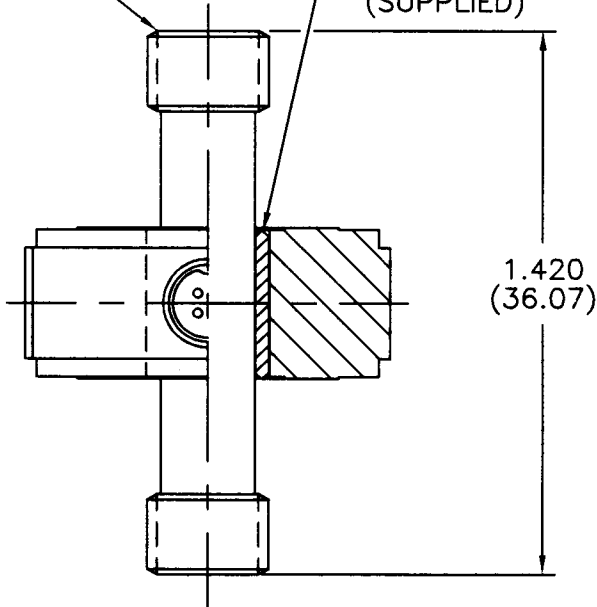
NEXT ASS'Y	USED ON	VAR

REVISIONS

REV	DESCRIPTION	ECN	DATE	APP'D
	-SEE SHEET ONE-			

MODEL M081A70  
STUD  
M8 X 1.25-6g  
TYP EACH END  
(SUPPLIED)

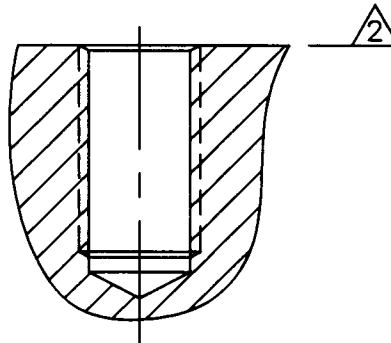
MODEL 083A10  
PILOT BUSHING  
(SUPPLIED)



TYP STUD MOUNTING  
INSTALLATION

MOUNTING HOLE PREPARATION:

DRILL  $\phi .266(\phi 6.80)$   $\triangle 3$   
X .655(16.64)  $\nabla$   
TAP M8 X 1.25-6H  
X .555(14.10)  $\nabla$   
PERFECT THREAD



4.) SEE MANUAL FOR PRELOAD INSTRUCTIONS.

$\triangle 3$  DRILL PERPENDICULAR TO MOUNTING SURFACE TO WITHIN  $\pm 1^\circ$ .

$\triangle 2$  MOUNTING SURFACE UNDER FORCE RING MUST BE FLAT WITHIN .001(0.03) TIR WITH A 32/ (0.8/) FINISH.

UNLESS SPECIFIED TOLERANCES

DIMENSIONS IN INCHES	DIMENSIONS IN MILLIMETERS (IN PARENTHESIS)
DECIMALS XX $\pm .01$ XXX $\pm .005$	DECIMALS XX $\pm 0.3$ XXX $\pm 0.13$
ANGLES $\pm 2$ DEGREES	ANGLES $\pm 2$ DEGREES
FILLETS AND RADII .003 - .005	FILLETS AND RADII (0.07 - 0.13)

DRAWN	JDM	4-8-02	MFG	TDS	4/8/02
CHK'D	SM	4/10/02	ENGR	CLAR	4/10/02
APP'D	MYK	4/11/02	SALES	SM	4/10/02

TITLE  
INSTALLATION DRAWING  
MODEL M260A01 ICP  
TRIAxIAL FORCE SENSOR

**PCB PIEZOTRONICS™**  
3425 WALDEN AVE. DEPEW, NY 14043  
(716) 684-0001 EMAIL: SALES@PCB.COM

CODE IDENT. NO. 52681	DWG. NO. 12082
SCALE: 2X	
SHEET 3 OF 3	