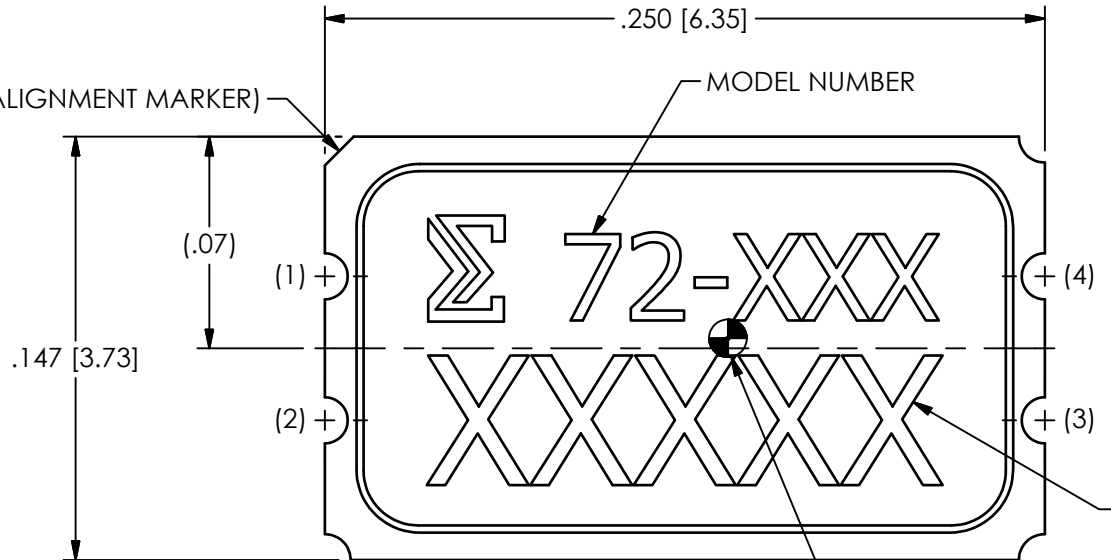


PCB Piezotronics Inc. claims proprietary rights in the information disclosed hereon. Neither it nor any reproduction thereof will be disclosed to others without the written consent of PCB Piezotronics Inc.

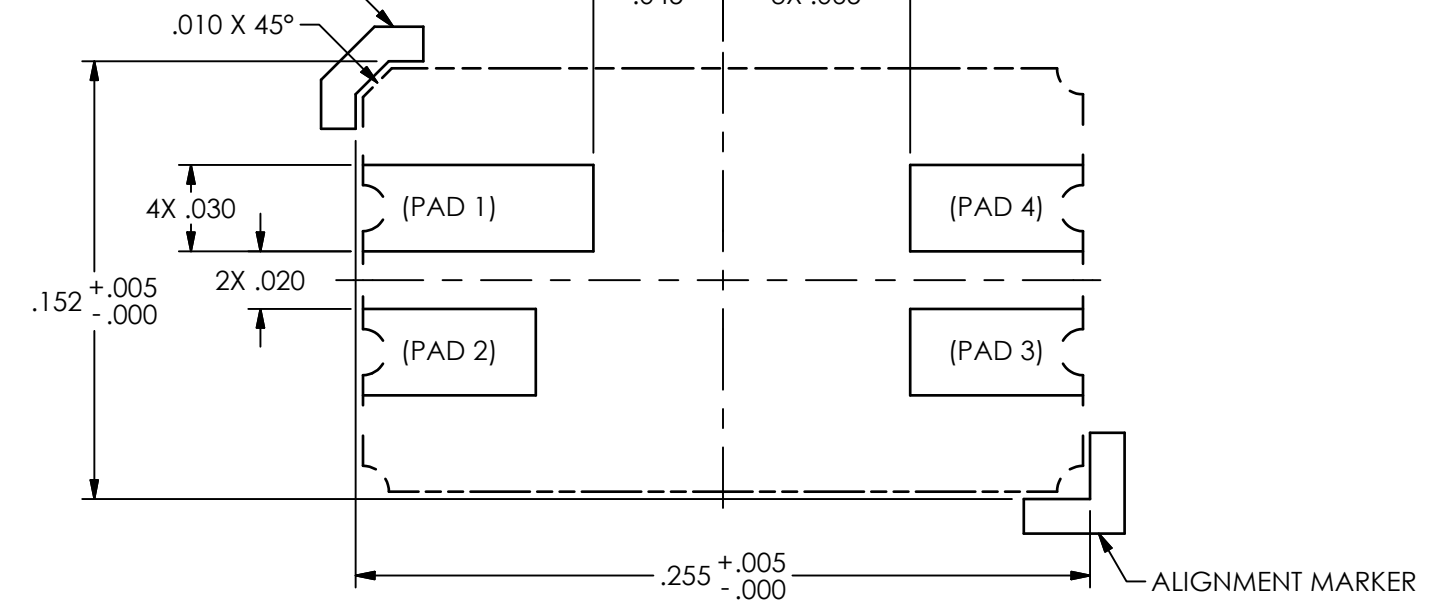
74725

REVISIONS		
REV	DESCRIPTION	DIN
NR	RELEASED TO DRAFTING	51661

.010 X 45° (ALIGNMENT MARKER)

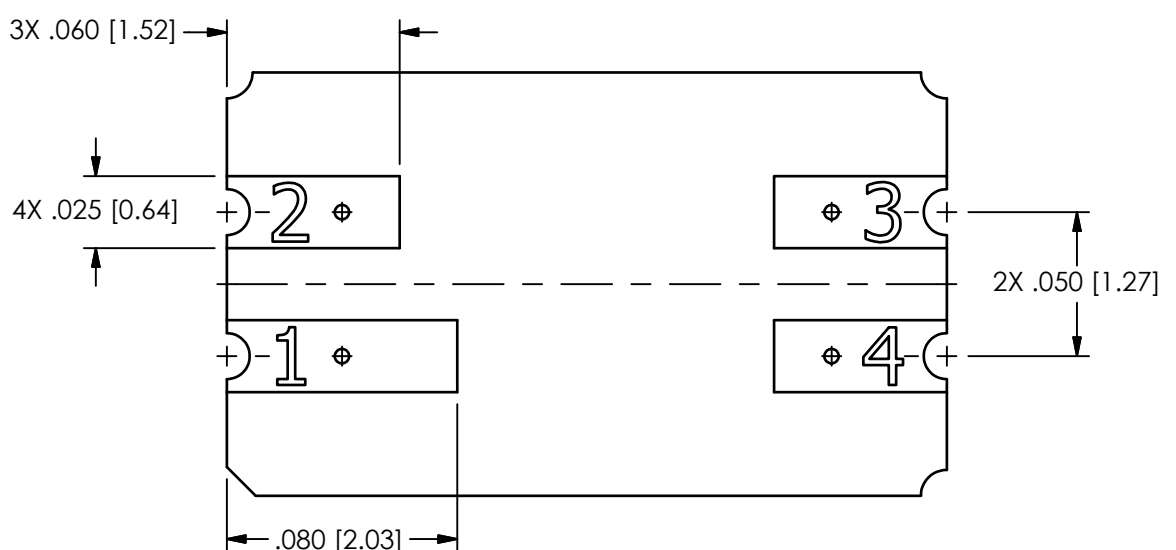
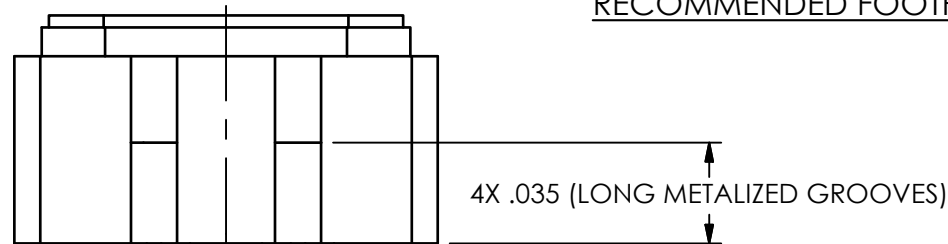
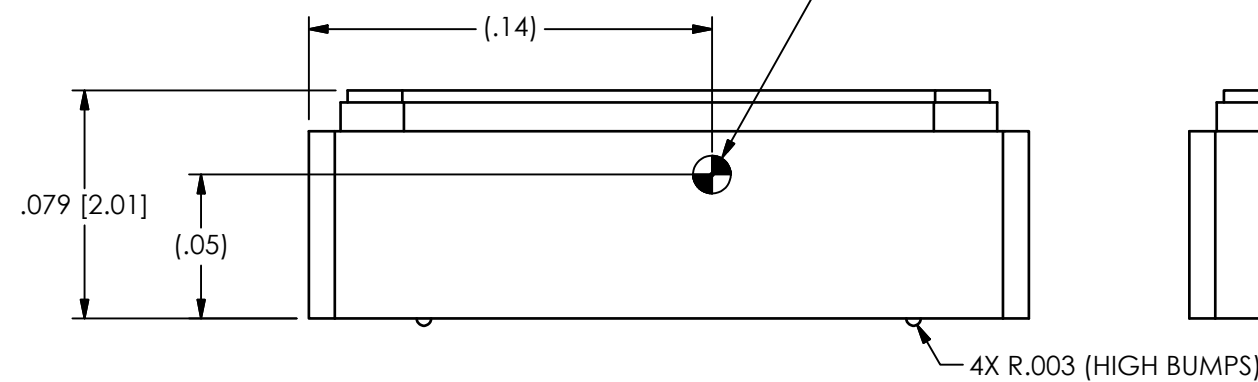


2 ALIGNMENT MARKER

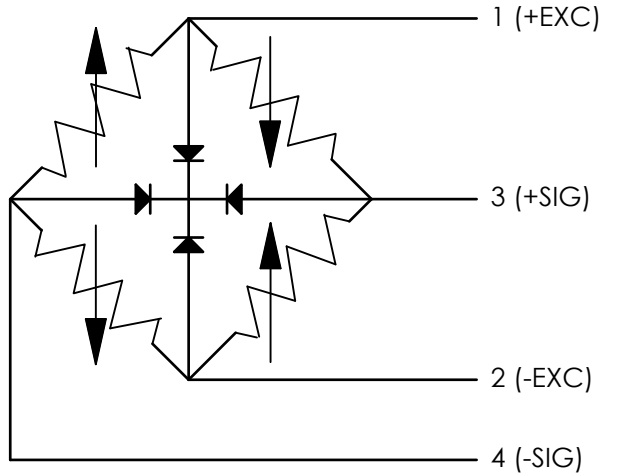


RECOMMENDED FOOTPRINT FOR MOUNTING

1



72 - XXX - YY
 EXCITATION VOLTAGE OPTION (IF NO VOLTAGE IS SPECIFIED THE DEFAULT IS 5 VDC)
 RANGE
 -2K = 2000 g
 -20K = 20000 g
 -60K = 60000 g
 BASIC MODEL NUMBER



2 CHAMFER ON UNIT IS ALIGNED WITH CHAMFER ON ALIGNMENT MARKER
 1 DIRECTION OF ACCELERATION FOR POSITIVE OUTPUT

UNLESS OTHERWISE SPECIFIED TOLERANCES ARE:		DRAWN		CHECKED		ENGINEER		PCB PIEZOTRONICS™	
DIMENSIONS IN INCHES	DIMENSIONS IN MILLIMETERS [IN BRACKETS]	JJF	4/27/21	JJF	4/27/21	JKN	4/27/21	3425 WALDEN AVE. DEPEW, NY 14043 (716) 684-0001 E-MAIL: sales@pcb.com	
DECIMALS XX ±.03 XXX ±.010	DECIMALS X ±.08 XX ±.025	TITLE OUTLINE DRAWING MODEL 72-XXX							
ANGLES ± 2 DEGREES	ANGLES ± 2 DEGREES								
FILLETS AND RADII .003 - .005	FILLETS AND RADII 0.07 - 0.13	CODE IDENT. NO. 52681		DWG. NO. 74725		SCALE: 15X		SHEET 1 OF 1	