



NEW PRODUCT RELEASES BY PCB PIEZOTRONICS

 Including **Endevco** sensors, electronics, and cables

March, 2026



ACCELEROMETERS FOR SHOCK & VIBRATION MEASUREMENTS

CE



LOW PROFILE DIFFERENTIAL VC MEMS ACCELEROMETER

MODEL 3741F125G

- Measurement Range: ± 5 g pk
- Sensitivity: 540 mV/g
- Frequency Range: 0 to 700 Hz
- Lightweight, hard anodized aluminum housing

CE



DIFFERENTIAL OUTPUT TRIAXIAL VC MEMS ACCELEROMETER

SERIES 3743G

- Measurement Ranges: ± 2 , ± 5 , ± 10 , ± 30 , ± 50 , ± 100 , ± 200 g pk
- Sensitivities ($\pm 3\%$): 1350, 540, 270, 90, 54, 27, 13.5 mV/g
- Frequency Range ($\pm 5\%$): 0 to 1500 Hz
- Option of integral M8x1 8-pin connector or IP67 connection to integral cable

Σ
CE



AMPLIFIED OUTPUT PIEZORESISTIVE ACCELEROMETER

ENDEVCO SERIES 7262A

- Measurement Ranges: ± 100 , ± 500 , ± 1000 g
- Sensitivity: 4, 1.6, 0.8 mV/g
- Resonance Frequency: 25,000 Hz
- Rugged to 10,000 g shock

CE



LOW PROFILE TRIAXIAL VC MEMS ACCELEROMETER

SERIES 3753A

- Measurement Ranges: ± 2 , ± 5 , ± 10 , ± 20 , ± 40 g pk
- Sensitivities: 1000, 400, 200, 100, 50 mV/g
- Frequency Range ($\pm 5\%$): 0 to 550 Hz
- IP67-rated for reliable outdoor use



CASE ISOLATED TRIAXIAL CRYOGENIC ICP® ACCELEROMETER

MODEL 354A14

- Measurement Range: ± 500 g pk
- Sensitivity: 10.0 mV/g
- Frequency Range ($\pm 5\%$): 2.5 to 5000 Hz
- Broadband Resolution: 0.004 g rms
- Temperature Range: -320 to +250 °F (-195 to +121 °C)

CE



HIGH-VOLTAGE TRIAXIAL ICP® ACCELEROMETER

MODEL HV356A03

- Measurement Range: ± 500 g pk
- Sensitivity: 10 mV/g
- Frequency Range (Y or Z Axis) ($\pm 5\%$): 2 to 6800 Hz
- Frequency Range (Z axis) ($\pm 5\%$): 2 to 4200 Hz
- Electrically insulated for use up to 2000 VDC



EXPLORE PCB'S LATEST TECHNOLOGIES IN PERSON

SCAN TO VIEW UPCOMING TRADESHOWS & CONFERENCES





ACCELEROMETERS FOR STRUCTURAL STABILITY & PRECISION MANUFACTURING



SEISMIC ICP® ACCELEROMETER

MODEL 393B03

Measurement Range: ± 5 g pk

Sensitivity: 1000 mV/g

Frequency Range ($\pm 5\%$): 0.5 to 2000 Hz

Broadband Resolution: 0.00001 g rms



HIGH SENSITIVITY SEISMIC ICP® ACCELEROMETER

MODEL 393C12

Measurement Range: 0.5 g pk

Sensitivity: 10,000 mV/g

Frequency Range ($\pm 5\%$): 0.15 to 1000 Hz

Broadband Resolution: 0.000008 g rms



HIGH SENSITIVITY SEISMIC ICP® ACCELEROMETER

MODEL 393C31

Measurement Range: 0.5 g pk

Sensitivity ($\pm 5\%$): 10.0 V/g

Frequency Range ($\pm 5\%$): 0.1 to 200 Hz

Broadband Resolution: 0.2 μ g rms



CASE ISOLATED TRIAXIAL SEISMIC ICP® ACCELEROMETER

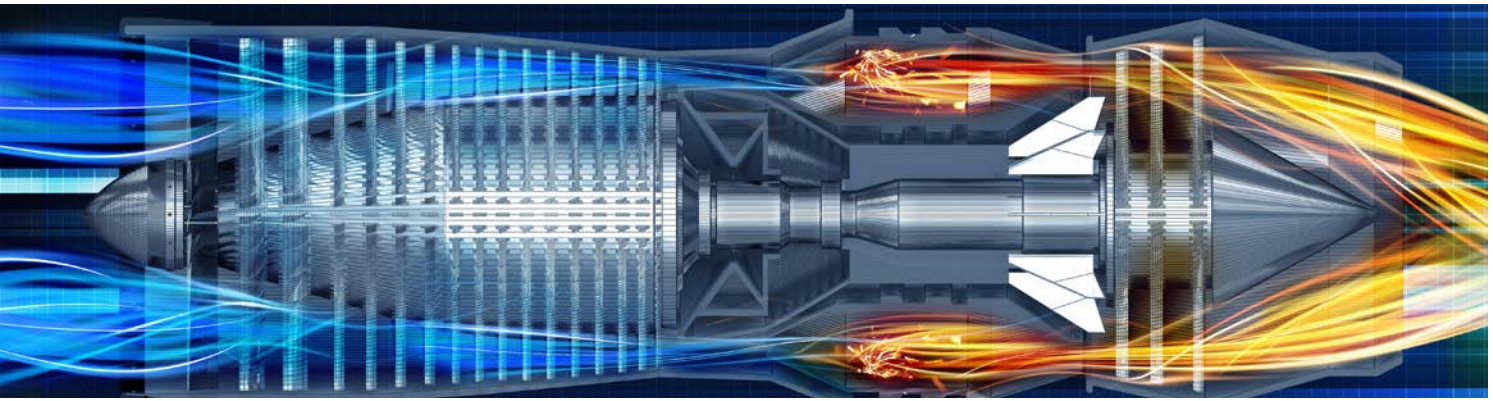
MODEL 354A12

Measurement Range: 0.5 g pk

Sensitivity: 10,000 mV/g

Frequency Range ($\pm 5\%$): 0.17 to 700 Hz

Broadband Resolution: 10 μ g rms



PRESSURE SENSORS FOR SPACE, DEFENSE, AND R&D APPLICATIONS

CE



UHT-12™ CHARGE OUTPUT PRESSURE SENSOR

MODEL 116A05

Wide Temperature Range: -320 to $+800^{\circ}\text{F}$
(-196° to $+427^{\circ}\text{C}$)

Measurement Range: 100 psi (6.9 bar)

Resonant Frequency: ≥ 100 kHz

Case-isolated design to reduce electrical noise
and ground loops

STABLE DYNAMIC MEASUREMENT AT EXTREME TEMPERATURES

UHT-12™ technology enables accurate dynamic pressure measurements in extreme thermal environments by eliminating pyroelectric noise and maintaining sensitivity across wide temperature ranges. The Model 116A05 is a UHT-12™ high temperature pressure sensor engineered for applications that require accurate measurement of both dynamic pressure and acoustic behavior across extreme thermal conditions. Typical applications include rocket motor combustion instability studies, high-temperature dynamic pressure measurements, and steam pipe and high-temperature process monitoring where reliable acoustic and pressure data are critical.



ACCELEROMETERS FOR MACHINERY HEALTH MONITORING

CE



UNDERWATER TRIAXIAL RING STYLE ICP® ACCELEROMETER

MODEL 604M32

- Measurement Range: ± 50 g
- Sensitivity: ($\pm 20\%$): 100 mV/g
- Frequency Range: (± 3 dB): 30 to 300,000 cpm
- Hydrotested to 500 psi (1000 ft underwater)



TRIAxIAL RING STYLE ICP® ACCELEROMETER WITH TEMPERATURE OUTPUT

MODEL T0604B91

- Measurement Range: ± 50 g
- Sensitivity: ($\pm 20\%$): 100 mV/g
- Frequency Range: (± 3 dB): 30 to 300,000 cpm
- Case isolated to reduce electrical noise and ground loops

CE



ICP® ACCELEROMETER WITH RESISTANCE TEMPERATURE DETECTION

MODEL RTD602D91

- Measurement Range: ± 50 g
- Sensitivity: 100 mV/g
- Frequency Range: (± 3 dB): 30 to 480,000 cpm
- RTD support for 2-, 3-, or 4-wire configurations (with 522SPBZ cable)



ECHO® WIRELESS VIBRATION SENSOR WITH TEMPERATURE OUTPUT

MODEL T0670A01

- Acceleration Range: 20 g pk
- Velocity Range: 4 ips rms
- Frequency Band: 916 MHz
- RMS Velocity Frequency Range (± 3 dB): 4 to 2300 Hz



CE



INTRINSICALLY SAFE LINEAR ADJUST MECHANICAL SWITCH

MODEL EX685A09

- Measurement Range: 0 to 7 g pk
- Frequency Range: 0 to 6000 cpm
- Patented linear adjust sensing element
- Remote reset models available in 24 VDC, 120 VAC and 240 VAC

CE



4-20 mA VIBRATION SENSOR WITH M12 CONNECTOR

MODELS 655A9X AND 656A9X

- Measurement Ranges ($\pm 5\%$):
0 to 0.5, 0 to 1.0, 0 to 2.0 in/sec pk or rms
- Frequency Range ($\pm 10\%$): 600 to 60,000 cpm
- Temperature Range: -40 to 221 °F (-40 to 105 °C)
- IP68-Rated

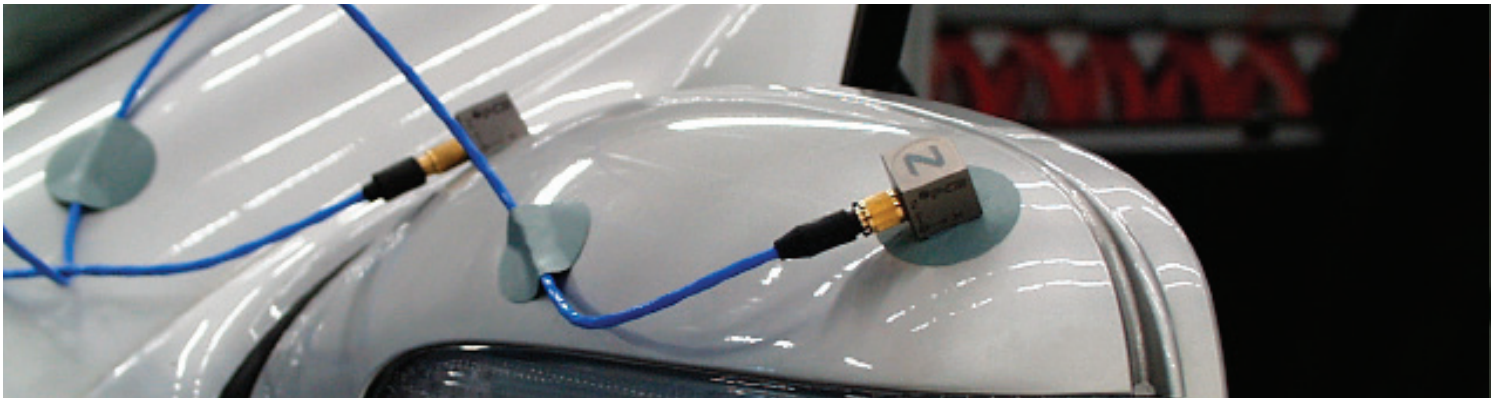
CE



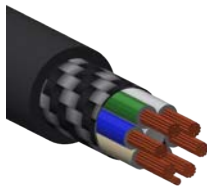
MICROPOWER EMBEDDABLE ICP® ACCELEROMETER

MODELS 66203RPZ1, 66213RPZ1 & 66253RPZ1

- Measurement Range: ± 50 , ± 25 , ± 12.5 g
- Sensitivity: ($\pm 20\%$): 25, 50, 100 mV/g
- Power Consumption: 180 μ W
- Current Draw: 60 μ A



CABLE ASSEMBLIES & CONNECTORS



INDUSTRIAL 6-CONDUCTOR M12 CABLE ASSEMBLY

MODEL 522

Cable Type: Twisted bundle with braid shield and drain wire

Jacket Material: Polyurethane

Molded M12 connector with RTD (SP) or triaxial (SQ) pinout

RoHS compliant



M8X1 8-SOCKET PLUG TO PIGTAIL CABLE ASSEMBLY

MODEL 528GXX

Cable Type: 8-conductor with overall braided shield

Jacket Material: Silicone

IP67-rated; RoHS compliant

Labeled for Endevco 3743G series



CUSTOM M12 MOLDED CABLE ASSEMBLY

MODEL 052LVSM

Cable Type: 2-conductor twisted pair with shield and drain wire

Jacket Material: Polyurethane

Connector Configuration: 3-socket half-breakaway connector to 5-pin molded M12 connector

Custom lengths available



CUSTOM M12 MOLDED CABLE ASSEMBLY

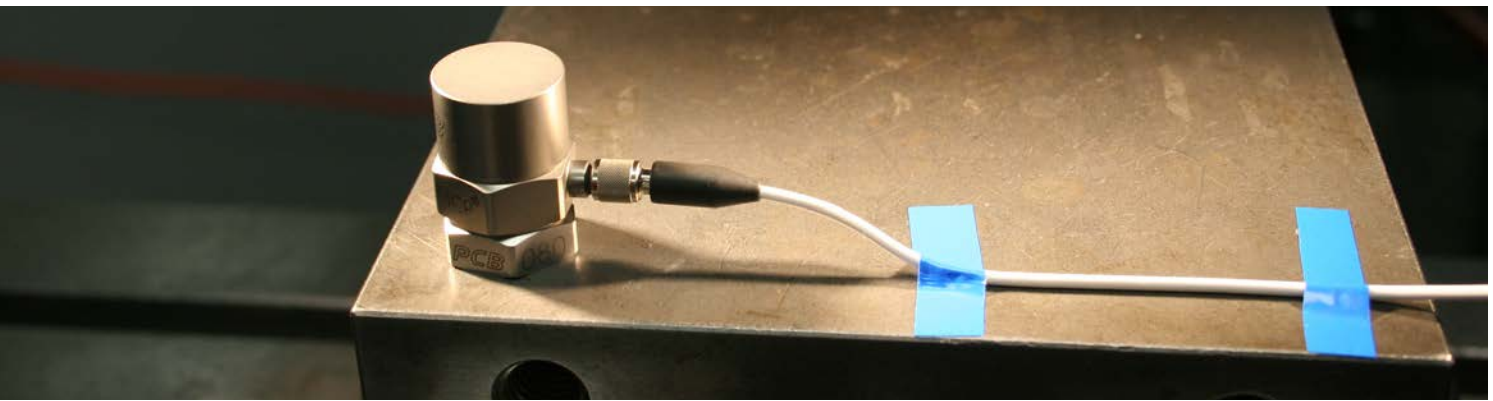
MODEL 518LXSM

Cable Type: 4-conductor shielded cable with drain wire

Jacket Material: Polyurethane

Connector Configuration: 5-socket quick-disconnect jack to 5-pin molded M12 connector

Custom lengths available



CE

8-PIN MINI DIN TRIPLE SPLICE CABLE ASSEMBLY

MODEL TD

Connector Style: Triple splice

Cable Configuration: (3) 1-ft, 4-conductor cables, shield grounded to (3x) 8-pin mini DIN

Temperature Range: -13 to +176 °F (-25 to +80 °C)

For Endevco 3743 Series; not sold individually



CE

PIGTAIL TRIPLE SPLICE CABLE ASSEMBLY

MODEL TE

Connector Style: Triple splice

Cable Configuration: (3) 1-ft, 4-conductor cables to (3) pigtail leads

Temperature Range: -40 to +221 °F (-40 to +105 °C)

For Endevco 3753A Series; not sold individually



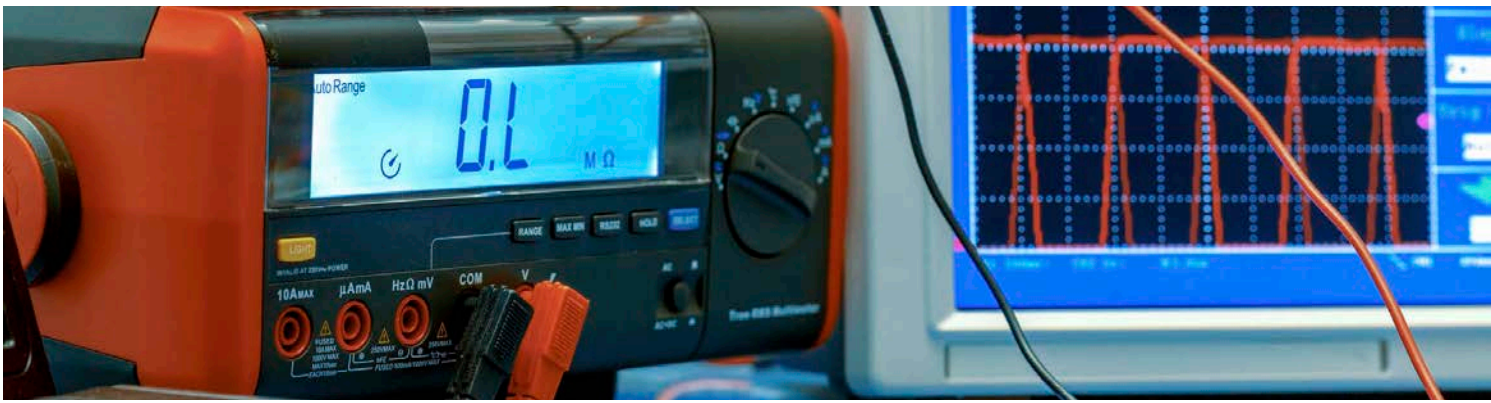
10-32 COAXIAL COUPLER

MODEL 070A109

Interface: 10-32 jack to 10-32 jack

Body Material: Nickel-plated

Contact Material: Gold-plated



ELECTRONICS



CE

ICP® DIN RAIL MOUNT SIGNAL CONDITIONER

MODEL 410D01

Waveform, Peak Track-Hold, and Zero Clamp analog outputs

AC or DC signal coupling and choice of 7 gain settings

Setup configurable via USB



CE

DIN RAIL MOUNT 24 VDC POWER SUPPLY

MODEL 682B01

Regulated 24 VDC output from 85–254 VAC or 90–350 VDC input

Built-in surge protection for industrial environments

Local and remote LED status indicators



TECHNICAL SUPPORT & CALIBRATION

PCB Piezotronics provides calibration, technical guidance, and on-site expertise to help maintain accurate, reliable measurement throughout the life of your system.

Calibration Services

ISO 17025 accredited calibration laboratories provide precise, traceable calibration for vibration, shock, pressure, force, and related instrumentation. Each sensor is inspected, cleaned, and verified using rigorous procedures to maintain accuracy and repeatability, with expedited turnaround options available to help minimize downtime.

Total Customer Satisfaction & Lifetime Support

Total Customer Satisfaction extends beyond the initial purchase. Lifetime Warranty Plus coverage, SensorLine™ technical support, and in-house engineering expertise ensure consistent quality and dependable performance across every PCB product line.

Schedule a Free On-Site Consultation

For industrial reliability programs, IMI sensors, a PCB Piezotronics division, offers complimentary on-site consultations led by experienced application engineers. Our team evaluates your equipment, reviews your monitoring goals, and recommends best-fit sensor solutions. Scan the QR code to schedule a complimentary on-site consultation or connect with our team directly.





SPECS LOOK RIGHT? REQUEST A QUOTE!

SCAN THE CODE TO CONNECT WITH OUR TEAM.



 **PCB PIEZOTRONICS**
AN AMPHENOL COMPANY

3425 Walden Avenue, Depew, NY 14043 USA

pcb.com | info@pcb.com | 800 828 8840 | +1 716 684 0001

© 2026 PCB Piezotronics, Inc. - all rights reserved. In the interest of constant product improvement, specifications are subject to change without notice. PCB Piezotronics, Inc. is a wholly-owned subsidiary of Amphenol Corporation. Accumetrics, Inc., PCB Piezotronics of North Carolina, Inc. and The Modal Shop, Inc. are wholly-owned subsidiaries of PCB Piezotronics, Inc. IMI Sensors, Endeveco and Larson Davis are Divisions of PCB Piezotronics, Inc. Except for any third party marks for which attribution is provided herein, the company names and product names used in this document may be the registered trademarks or unregistered trademarks of PCB Piezotronics, Inc. or its subsidiaries. Detailed trademark ownership information is available at www.pcb.com/trademarkownership.