



Fastener Tension & Fastener Torque-Tension Load Cells

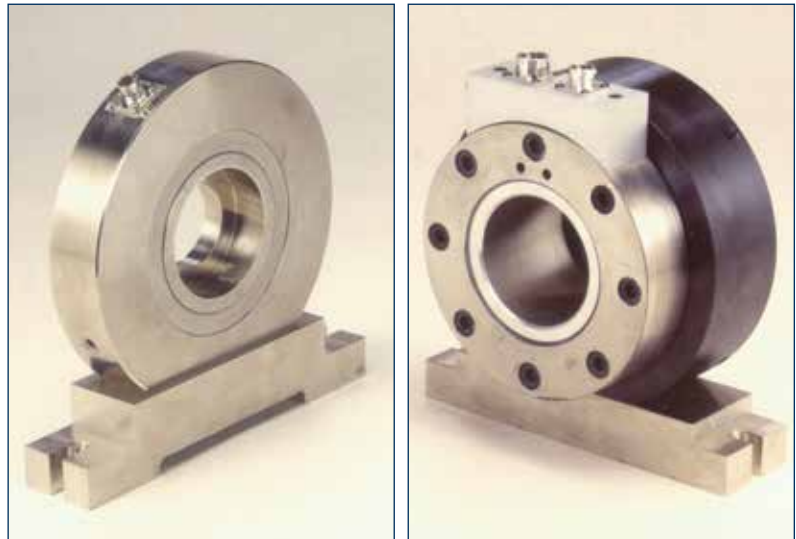
For Use in Measuring and Analyzing Threaded Fastener Characteristics in Production Lot Testing and R&D Studies

Highlights

- Fastener tension load cell capacities range from 3372 lbf to 112 klb (15 kN to 500 kN)
- Fastener Torque-Tension load cell capacities range from 4496 lbf to 405 klb (20 kN to 1,800 kN)
- Uses standard Skidmore-Wilhelm plates
- Slotted base allows for fast and easy securing to existing test fixtures

Applications

- Measure/Analyze Threaded Fastener Characteristics
- Perform Laboratory Evaluation of Fastener Tension & Thread Torque Characteristics
- Measure Fastener Tension and/or Thread Friction Torque During Rundown Operations
- Test Special Devices (such as lock-nuts, serrated underheads, etc.)
- Measure Effects of Materials, Surface Finishes, Platings, & Coatings



Series FT9000 Fastener Tension Load Cell Series FTA9000 Torque-Tension Load Cell

PCB Load & Torque Division's RS Technologies Series FT9000 & FTA9000 Fastener Tension and Fastener Torque-Tension Load Cells use a full bridge strain gage design. This complete line of fastener testing load cells provides a signal proportional to the tension developed in a test fastener when the tightening torque is applied. In addition, the fastener torque-tension version, also referred to as a research head, measures the thread torque (pitch torque plus thread friction torque) at the same time. The tension or torque-tension output signals from either type of load cell are read using conventional strain gage readout device or recorded by a data acquisition system. These load cells serve as an integral part of a torque-tension fastener test system when used with a torque-angle sensor and a suitable data acquisition instrument; Model 962 Portable Data Recorder, Model 3210 LabMaster Portable, or Model 3200 LabMaster Professional, available from RS Technologies, are recommended.

RS Technologies provides calibration services for this and their other torque and force products at its A2LA Accredited Calibration Laboratory in Farmington Hills, Michigan.

As with all PCB® instrumentation, these products are complemented with toll-free applications assistance, 24-hour technical service, and are backed by a no-risk policy that guarantees total customer satisfaction or your money refunded.



Series FT9000 & FTA9000 Load Cells

Common Specifications

Output at Rated Capacity	2 mV/V
Non-linearity	±0.2% FS
Overload Capacity	50% FS
Hysteresis	± 0.2% FS
Excitation Voltage [1]	±10 VDC
Bridge Resistance	350 Ohms, Full Bridge, Bonded Strain Gage

Supplied Accessories

Shunt Calibration Resistor, & A2LA Accredited Calibration Certificate

Note

[1] Calibrated at 10 VDC, usable 5 to 20 VDC or VAC RMS

Series FT9000 Fastener Tension Load Cells

Model No.	Capacity
059810-01153	3372 lbf (15 kN)
059810-01253	5620 lbf (25 kN)
059810-01104	22 klbf (100 kN)
059810-01304	67 klbf (300 kN)
059810-01504	112 klbf (500 kN)

Recommended Accessories

Model No.	Description
080962-01000	Model 962 Recorder
083210-01000	Model 3210 LabMaster Portable
083200-01000	Model 3200 LabMaster Professional
099404-30610	Cable (Series FT9000)
099404-30566	Cable (Series FTA9000)

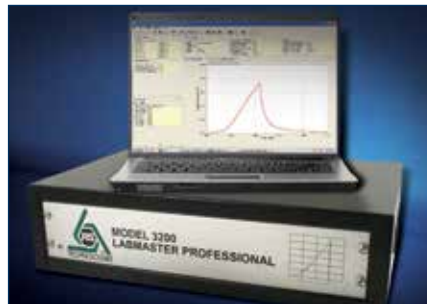
Series FTA9000 Fastener Tension Load Cells

Model No.	Thread Torque Capacity	Fastener Tension Capacity
059400-01024	15 lbf-ft (20 Nm)	4496 lbf (20 kN)
059500-01044	44 lbf-ft (60 Nm)	8992 lbf (40 kN)
059600-01104	110 lbf-ft (150 Nm)	22 klbf (100 kN)
059625-01304	590 lbf-ft (800 Nm)	67 klbf (300 kN)
059650-01604	1475 lbf-ft (2000 Nm)	135 klbf (600 kN)
059720-01095	2950 lbf-ft (4000 Nm)	202 klbf (900 kN)
059740-01185	5900 lbf-ft (8000 Nm)	405 klbf (1800 kN)

Recommended Data Acquisition Instrumentation



Model 962 Portable Data Recorder



Model 3200 LabMaster Professional



Model 3210 LabMaster Portable



24350 Indoplex Circle, Farmington Hills, MI 48335 USA

Toll-Free in USA 866-684-7107

24-hour SensorLineSM 716-684-0001

Fax 248-888-8266 E-mail ltinfo@pcb.com

Website www.pcb.com

ISO 9001 CERTIFIED ■ A2LA ACCREDITED to ISO 17025

© 2014 PCB Group, Inc. In the interest of constant product improvement, specifications are subject to change without notice. PCB, ICP, Modally Tuned, Spindler, Swiveler and TORKDISC are registered trademarks of PCB Group. SoundTrack LXT, Spark and Blaze are registered trademarks of PCB Piezotronics. SensorLine is a service mark of PCB Group. All other trademarks are property of their respective owners.

LT-RS-9000Series-0914

Printed in U.S.A.

PCB's Line of Fastener Test Products (formerly the RS Technologies product line) includes test systems and threaded fastener torque/angle/tension systems ideal for use in the Automotive, Aerospace & Defense, Power Generation industries, and for product assembly by manufacturers or processors of threaded fasteners or other companies that use threaded fasteners to assemble their products.

Visit www.pcb.com to locate your nearest sales office