

11205

PCB Piezotronics Inc. claims proprietary rights in the information disclosed hereon. Neither it nor any reproduction thereof will be disclosed to others without written consent of PCB Piezotronics Inc.

APPLICATION		
NEXT ASS'Y	USED ON	VAR

REVISIONS				
REV	DESCRIPTION	ECN	DATE	APP'D

ELECTRICAL CONNECTOR
COAXIAL 5-44 UNF-2A

△ .156(4.00) HEX

10-32 UNF-2A

MODEL 065A10 SEAL
.022(.56) THICK
MATERIAL: BRASS
(SUPPLIED)

$.099^{+.000}_{-.001}$ (2.51 $^{+0.00}_{-0.03}$)
 $.140^{+.000}_{-.001}$ (3.57 $^{+0.00}_{-0.03}$)

.11(2.8)

∅.190(∅4.83)

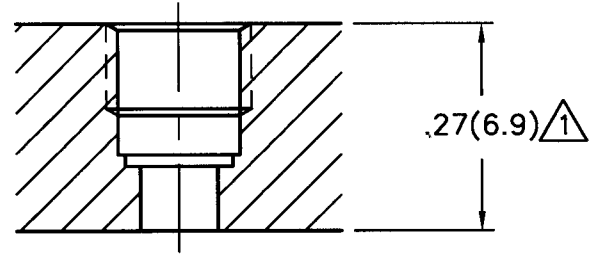
.90(22.9)

.27(6.9)

$.100^{+.000}_{-.001}$ (2.54 $^{+0.00}_{-0.03}$)

MOUNTING HOLE PREPARATION:

- ∅.101(∅2.57) THRU △3
- └ ∅.140(∅3.57) △3
- X $.190^{+.000}_{-.005}$ (4.83 $^{+0.00}_{-0.13}$) ▽2
- └ ∅.159(∅4.04)
- X $.175^{+.000}_{-.005}$ (4.45 $^{+0.00}_{-0.13}$) ▽
- TAP 10-32 UNF-2B
- X .110(2.79) ▽ PERF. THD.



FLUSH MOUNT

- △4 RECOMMENED MOUNTING TORQUE ON .156(4.00) HEX TO BE 15 INCH LBS.(169 Ncm)
- △3 THESE DIAMETERS MUST BE CONCENTRIC TO WITHIN .001(0.03) TIR
- △2 SEAL SURFACES MUST BE FLAT AND FREE OF TOOL MARKS WITH A MIN. 63√(1.6√) FINISH
- △1 FOR INSTALLATIONS DEEPER THAN .27(6.9) └ ∅.250(∅6.35) TO CLEAR BODY

UNLESS SPECIFIED TOLERANCES		DRAWN	MDD 6/25/99	MFG	JBS 6/29/99	 3425 WALDEN AVE. DEPEW, NY 14043 (716) 684-0001 EMAIL: SALES@PCB.COM
DIMENSIONS IN INCHES	DIMENSIONS IN MILLIMETERS (IN PARENTHESIS)	CHK'D	DM 6/25/99	ENGR	ACT 6/25/99	
DECIMALS XX ±.01 XXX ±.005	DECIMALS XX ±0.3 XXX ±0.13	APP'D	PL 6/29/99	Sales	RJR 6/29/99	
ANGLES ±2 DEGREES	ANGLES ±2 DEGREES	TITLE	INSTALLATION DRAWING MODEL 105C02 PRESSURE SENSOR			
FILLETS AND RADII .003 - .005	FILLETS AND RADII (0.07 - 0.13)	CODE IDENT. NO.	52681		DWG. NO.	11205
DD011 REV. B 03/13/98		SCALE:	4X		SHEET	1 OF 2

11205

PCB Piezotronics Inc. claims proprietary rights in the information disclosed hereon. Neither it nor any reproduction thereof will be disclosed to others without written consent of PCB Piezotronics Inc.

APPLICATION		
NEXT ASS'Y	USED ON	VAR

REVISIONS				
REV	DESCRIPTION	ECN	DATE	APP'D

ELECTRICAL CONNECTOR
COAXIAL 5-44 UNF-2A

④ .156(4.00) HEX

10-32 UNF-2A

MODEL 065A38 SEAL
.105(2.67) THICK
MATERIAL: BRASS
(OPTIONAL)

.099^{+0.000}_{-.001} (2.51^{+0.00}_{-0.03})

.140^{+0.000}_{-.001} (3.57^{+0.00}_{-0.03})

.11(2.8)

∅.190(∅4.83)

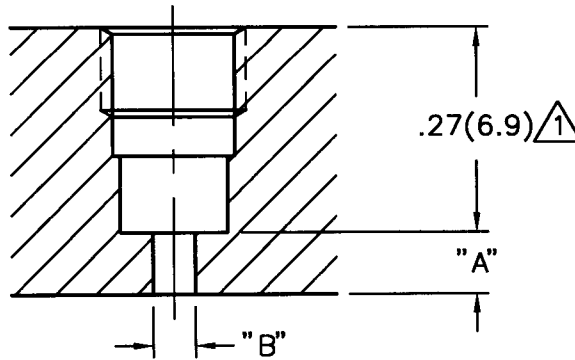
.90(22.7)

.27(6.9)

.100^{+0.000}_{-.001} (2.54^{+0.00}_{-0.03})

MOUNTING HOLE PREPARATION:

- ┌ ∅.140(∅3.57) ③
- X .270(6.86) ▽ ②
- ┌ ∅.159(∅4.04) ③
- X .200(5.08) ▽
- TAP 10-32 UNF-2B
- X .110(2.79) ▽ PERF. THD.



RECESS MOUNT

5.) DIMENSIONS "A" & "B" TO SUIT
USERS REQUIREMENTS

- ④ RECOMMENED MOUNTING TORQUE ON .156(4.00) HEX TO BE 15 INCH LBS.(169 Ncm)
- ③ THESE DIAMETERS MUST BE CONCENTRIC TO WITHIN .001(0.03) TIR
- ② SEAL SURFACES MUST BE FLAT AND FREE OF TOOL MARKS WITH A MIN. 63√(1.6√) FINISH
- ① FOR INSTALLATIONS DEEPER THAN .27(6.9) ┌ ∅.250(∅6.35) TO CLEAR BODY

UNLESS SPECIFIED TOLERANCES		DRAWN		MFG		PCB PIEZOTRONICS™	
DIMENSIONS IN INCHES	DIMENSIONS IN MILLIMETERS (IN PARENTHESIS)	CHK'D	DATE	ENGR	DATE	3425 WALDEN AVE. DEPEW, NY 14043 (716) 684-0001 EMAIL: SALES@PCB.COM	
DECIMALS XX ±.01	DECIMALS XX ±0.3	APP'D	DATE	DATE	DATE	CODE IDENT. NO.	DWG. NO.
XXX ±.005	XXX ±0.13	TITLE		INSTALLATION DRAWING		52681	11205
ANGLES ±2 DEGREES	ANGLES ±2 DEGREES	MODEL 105C02		PRESSURE SENSOR		SCALE: 4X SHEET 2 OF 2	
FILLETS AND RADII .003 - .005	FILLETS AND RADII (0.07 - 0.13)	DD011 REV. B 03/13/98					