

2

1

PCB Piezotronics Inc. claims proprietary rights in the information disclosed hereon. Neither it nor any reproduction thereof will be disclosed to others without the written consent of PCB Piezotronics Inc.

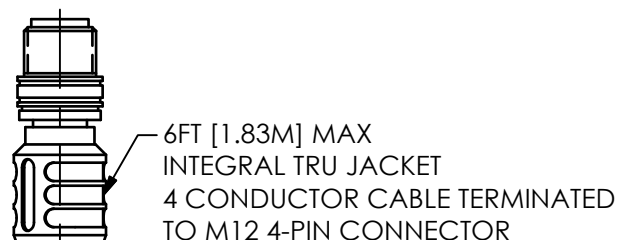
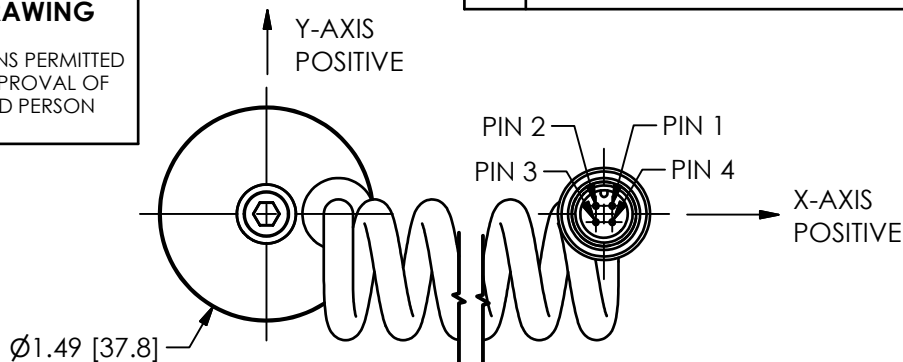
## REVISIONS

REV	DESCRIPTION	DIN
D	.24 [6.1] WAS .28 [7.1]	48522

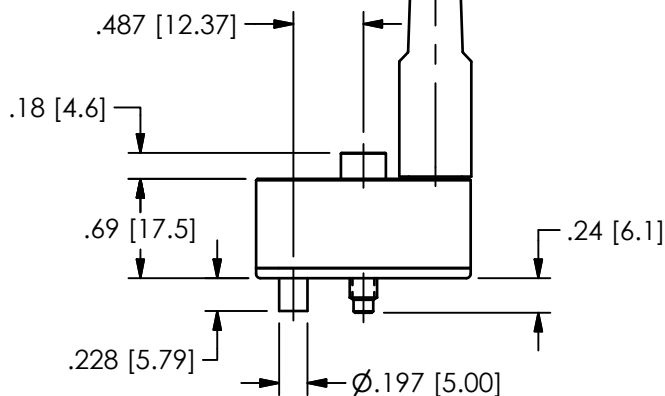
## RELATED DRAWING

NO MODIFICATIONS PERMITTED WITHOUT THE APPROVAL OF THE AUTHORIZED PERSON

55928



Z-AXIS  
POSITIVE



## M12 CONNECTOR PIN OUTS:

PIN 1: Z-AXIS  
PIN 2: X-AXIS  
PIN 3: Y-AXIS  
PIN 4: GROUND  
COUPLING NUT: OUTER SHIELD OF CABLE

## UNLESS OTHERWISE SPECIFIED TOLERANCES ARE:

DIMENSIONS IN INCHES

DECIMALS XX  $\pm 0.03$   
XXX  $\pm 0.010$

ANGLES  $\pm 2$  DEGREES

FILLETS AND RADII  
.003 - .005

DIMENSIONS IN MILLIMETERS  
[IN BRACKETS]

DECIMALS X  $\pm 0.8$   
XX  $\pm 0.25$

ANGLES  $\pm 2$  DEGREES

FILLETS AND RADII  
0.07 - 0.13

DRAWN

KRM

8/2/18

CHECKED

KRM

8/2/18

ENGINEER

RMB

8/2/18

TITLE

OUTLINE DRAWING  
CASE ISOLATED  
TRIAxIAL ACCELEROMETER

**PCB PIEZOTRONICS™**

3425 WALDEN AVE. DEPEW, NY 14043  
(716) 684-0001 E-MAIL: sales@pcb.com

CODE  
IDENT. NO.  
52681

DWG. NO.

55928

SCALE: .75X

SHEET 1 OF 1

2

1