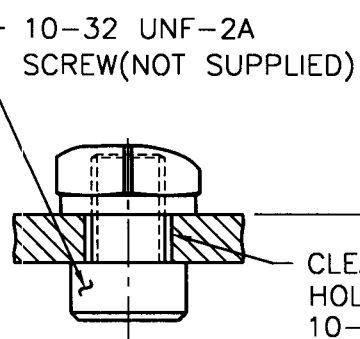
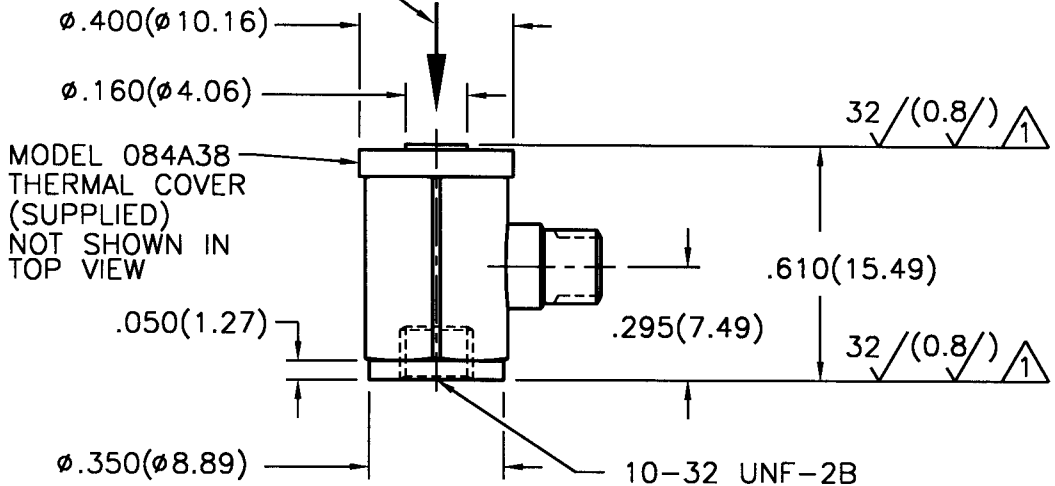
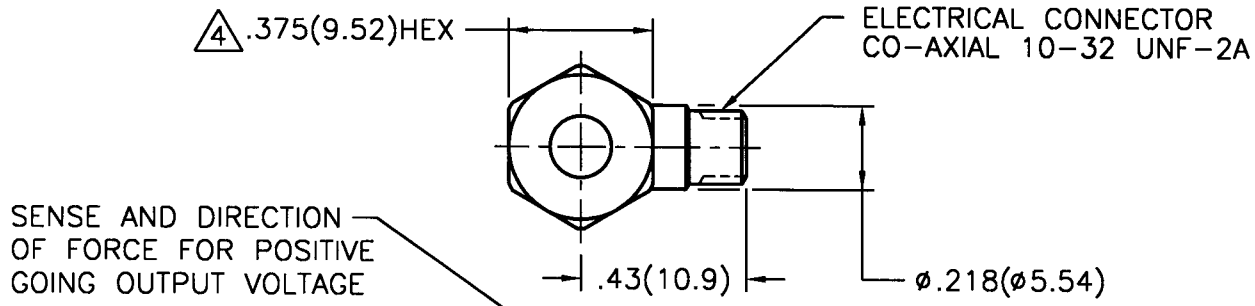


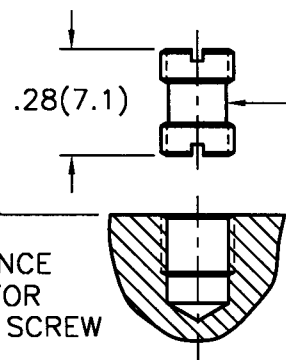
6329

PCB Piezotronics Inc. claims proprietary rights in the information disclosed hereon. Neither it nor any reproduction thereof will be disclosed to others without written consent of PCB Piezotronics Inc.

APPLICATION			REVISIONS				
NEXT ASS'Y	USED ON	VAR	REV	DESCRIPTION	ECN	DATE	APP'D
			B	REVISED PER ECR	9019	4/17/98	<i>DNH/AB</i>



SCREW MOUNTING



STUD MOUNTING

10-32 UNF-2B
X .130(3.30)▽

MOUNTING PREPARATION

DRILL ∅.159(∅4.04) △3
X .23(5.8)▽
TAP 10-32 UNF-2B
X .15(3.8)▽ MIN. PERF. THD.

- △4 MOUNTING TORQUE ON .375(9.52) HEX 15-20 INCH POUNDS (169-226 NEWTON CENTIMETERS).
- △3 DRILL PERPENDICULAR TO MOUNTING SURFACE WITHIN ±1°.
- △2 MOUNTING SURFACE UNDER LOAD CELL MUST BE FLAT WITHIN .001(0.03) TIR, WITH AT LEAST 32 / (1.6 /) FINISH.
- △1 THESE SURFACES FLAT AND PARALLEL WITHIN .001(0.03) TIR.

UNLESS SPECIFIED TOLERANCES		DRAWN				MFG		PCB PIEZOTRONICS™	
DIMENSIONS IN INCHES	DIMENSIONS IN MILLIMETERS (IN PARENTHESIS)	MOD	4/20/98	JDS	4/20/98	3425 WALDEN AVE. DEPEW, NY 14043			
DECIMALS XX ±.01	DECIMALS XX ±0.3	CHK'D	DM	ENGR	LAB	(716) 684-0001 EMAIL: SALES@PCB.COM			
XXX ±.005	XXX ±0.13	APP'D	ACT	Sales	RRR	CODE IDENT. NO. 52681			
ANGLES ±2 DEGREES	ANGLES ±2 DEGREES	TITLE				DWG. NO.			
FILLET AND RADII .003 - .005	FILLET AND RADII (0.07 - 0.13)	INSTALLATION DRAWING				6329			
DD011 REV. B 03/13/98		MODEL 209C01 & 209C02 LOAD CELL BUILT IN AMPLIFIER				SCALE: 2X SHEET 1 OF 1			