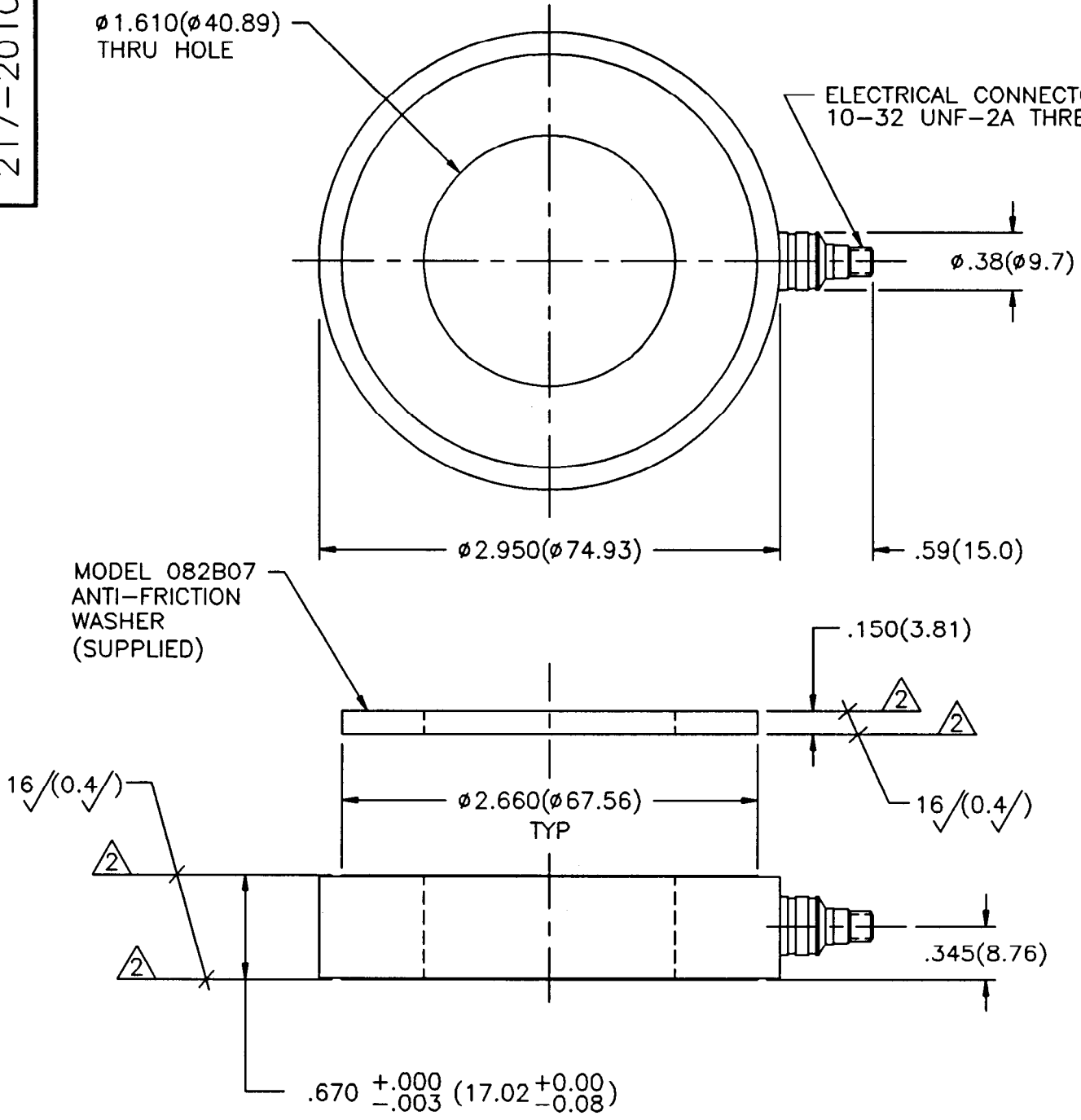


217-2010-90

APPLICATION		
NEXT ASS'Y	USED ON	VAR

REVISIONS				
REV	DESCRIPTION	ECN	DATE	APP'D



MODEL 082B07
ANTI-FRICTION
WASHER
(SUPPLIED)

ELECTRICAL CONNECTOR
10-32 UNF-2A THREAD

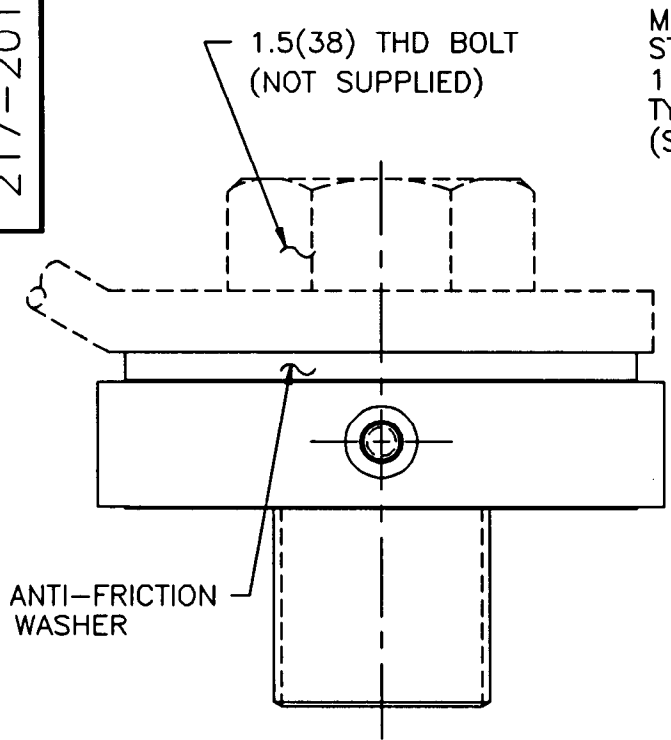
2 THESE SURFACES TO BE FLAT AND PARALLEL TO WITHIN .001(0.03) TIR.
1.) SEE SHEET TWO FOR MOUNTING INSTRUCTIONS.

UNLESS SPECIFIED TOLERANCES		DRAWN	OMP	4/15/94	MFG	RJA	7/12/94	PCB PIEZOTRONICS, INC. 3425 WALDEN AVE. DEPEW, NEW YORK 14043 PHONE: (716) 684-0001	
DIMENSIONS IN INCHES	DIMENSIONS IN MILLIMETERS (IN PARENTHESIS)	CHK'D	Dm	7/7/94	ENGR	PC	4/8/94		
DECIMALS XX ± .01 XXX ± .005	DECIMALS X ± 0.3 XX ± 0.13	APP'D	AS	4/14/94	Sales	SEL	7/14/94		
ANGLES ± 2 DEGREES	ANGLES ± 2 DEGREES	TITLE					INSTALLATION DRAWING MODEL 217B FORCE RING		CODE IDENT. NO. 52681
FILLETS AND RADII .003 - .005 (0.07 - 0.13)								DWG. NO. 217-2010-90	SCALE: FULL SHEET 1 OF 2

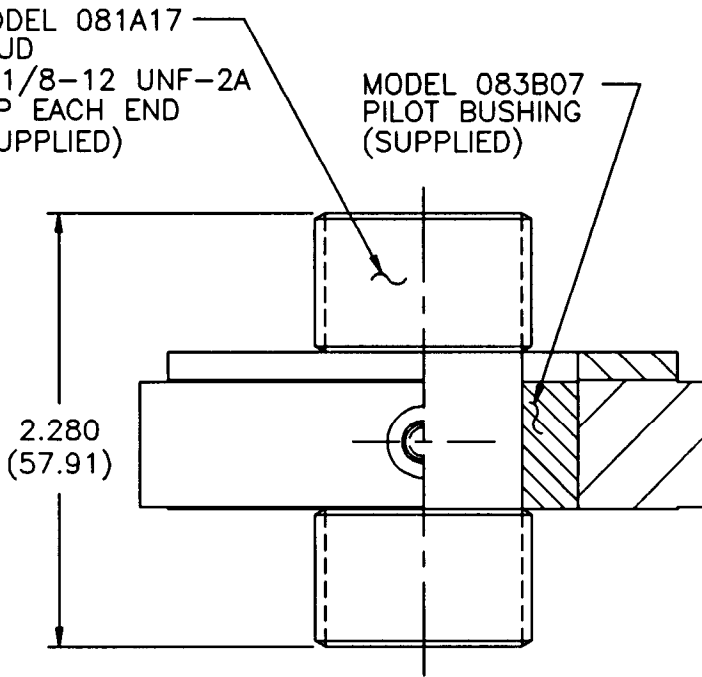
217-2010-90

APPLICATION		
NEXT ASS'Y	USED ON	VAR

REVISIONS				
REV	DESCRIPTION	ECN	DATE	APP'D
	- SEE SHEET ONE -			

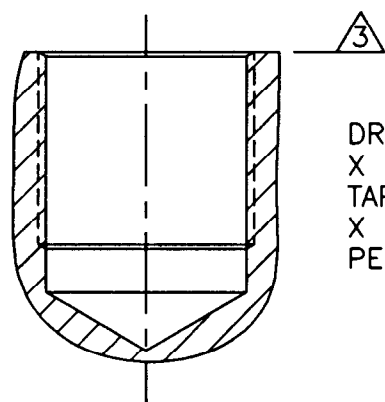


TYP BOLT MOUNTING
INSTALLATION

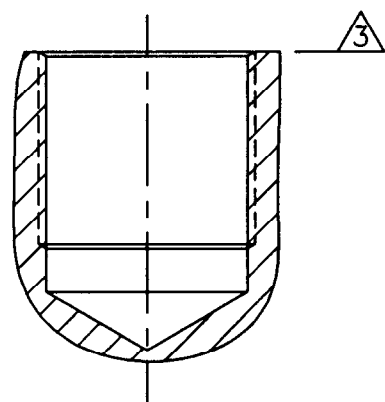


TYP STUD MOUNTING
INSTALLATION

DRILL & TAP ⁴ AS REQUIRED FOR 1.5(38) THD BOLT



DRILL $\phi 1.046(\phi 26.57)$ ⁴
X 1.25(31.8) ∇
TAP 1 1/8-12 UNF-2B
X 1.00(25.4) ∇
PERFECT THREAD



5.) SEE MANUAL FOR PRELOAD INSTRUCTIONS.

- ⁴ DRILL PERPENDICULAR TO MOUNTING SURFACE TO WITHIN $\pm .001^{\circ}$.
- ³ MOUNTING SURFACE UNDER FORCE RING MUST BE FLAT WITHIN .001(0.03) TIR WITH A 63/ (1.6/) FINISH.

UNLESS SPECIFIED TOLERANCES		DRAWN	AKA	MFG	RJA	4/1/94	PCB PIEZOTRONICS, INC. 3425 WALDEN AVE. DEPEW, NEW YORK 14043 PHONE: (716) 684-0001
DIMENSIONS IN INCHES	DIMENSIONS IN MILLIMETERS (IN PARENTHESIS)	CHK'D	Dm	ENGR	DE	4/8/94	
DECIMALS XX $\pm .01$ XXX $\pm .005$	DECIMALS X ± 0.3 XX ± 0.13	APP'D	AB	Sites	SGC	4/14/94	
ANGLES ± 2 DEGREES	ANGLES ± 2 DEGREES	TITLE		INSTALLATION DRAWING MODEL 217B FORCE RING		CODE IDENT. NO. 52681	
FILLET AND RADII .003 - .005 (0.07 - 0.13)						DWG. NO. 217-2010-90	SCALE: FULL SHEET 2 OF 2