

123-1210-90

PCB Piezotronics Inc. claims proprietary rights in the information disclosed hereon. Neither it nor any reproduction thereof will be disclosed to others without the written consent of PCB Piezotronics Inc.

REVISIONS		
REV	DESCRIPTION	DIN
J	UPDATE TOLERANCE ON MOUNTING HOLE	45725

4 WATER TUBE, AN TYPE FITTING
5/16-24 UNF-2A

ELECTRICAL CONNECTOR
COAXIAL 10-32 UNF-2A

2 1.00[25.4] HEX

M14x1.25 - 6g

4 HELIUM INPUT, AN TYPE FITTING
5/16-24 UNF-2A

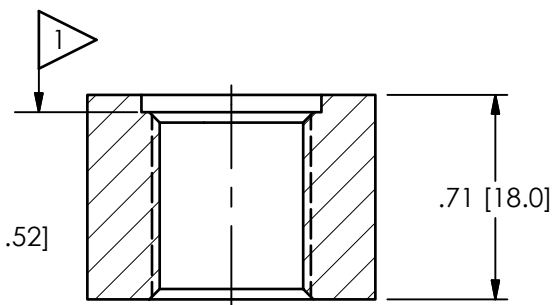
MODEL 006EB004EB
ARMORED CABLE
4 ft [1.2 M] LONG

3 MODEL 031A HELIUM FILTER
10 MICRON (SUPPLIED AND ASSEMBLED AT PCB)

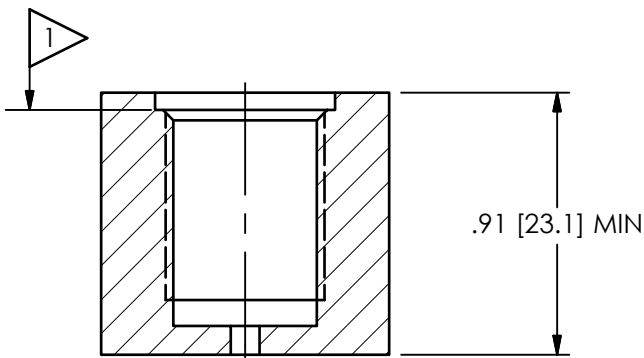
MODEL 065A15 SEAL
(SUPPLIED)

PROTECTIVE CERAMIC COATING

MOUNTING HOLE PREPARATION
M14x1.25-6H THRU
└┐ $\phi .625 \pm .001 [15.88 \pm .02]$ $\nabla .060 [1.52]$



FLUSH MOUNT



RECESS MOUNT

MOUNTING HOLE PREPARATION
 $\phi .100 [2.54]$ THRU
M14x1.25-6H $\nabla .720 [18.29]$
└┐ $\phi .625 \pm .001 [15.88 \pm .02]$ $\nabla .060 [1.52]$

- 4 RECOMMENDED MOUNTING TORQUE: 15-30 in-lbs [1.7-3.4 Nm]
- 3 SUPPORT .375[9.53] HEX ON FILTER WHEN ATTACHING LINE TO AVOID DAMAGE TO HELIUM INPUT TUBE
- 2 RECOMMENDED MOUNTING TORQUE ON 1.00[25.4] HEX: 10-15 ft-lbs [13-20 Nm]
- 1 SEAL SURFACE MUST BE FLAT AND FREE OF TOLL MARKS WITH A 63 [1.5] FINISH

UNLESS OTHERWISE SPECIFIED TOLERANCES ARE:		DRAWN		CHECKED		ENGINEER	
DIMENSIONS IN INCHES	DIMENSIONS IN MILLIMETERS [IN BRACKETS]	ECB	8/18/16	ECB	8/18/16	BAM	8/18/16
DECIMALS XX $\pm .01$ XXX $\pm .005$	DECIMALS X $\pm .3$ XX $\pm .13$	TITLE INSTALLATION DRAWING MODELS 123A21,22,23 & 24 HELIUM BLEED WATER COOLED SENSOR					
ANGLES ± 2 DEGREES	ANGLES ± 2 DEGREES						
FILLETS AND RADII .003 - .005	FILLETS AND RADII 0.07 - 0.13	CODE IDENT. NO. 52681		DWG. NO. 123-1210-90		SCALE: 1.5X SHEET 1 OF 1	

PCB PIEZOTRONICS

3425 WALDEN AVE. DEPEW, NY 14043
(716) 684-0001 E-MAIL: sales@pcb.com