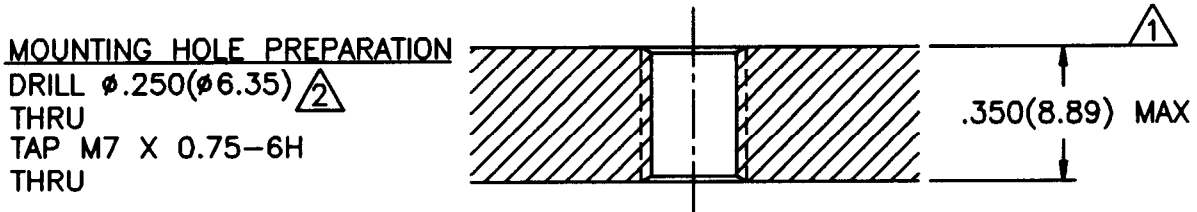
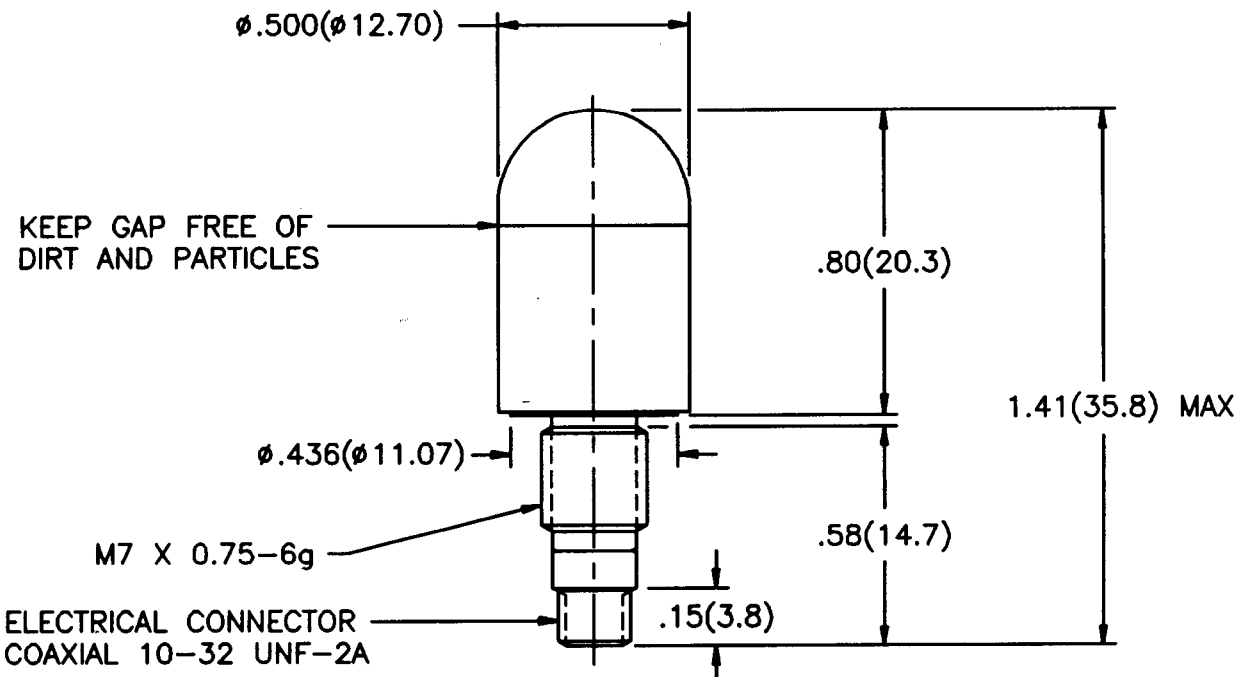


1702

APPLICATION		
NEXT ASS'Y	USED ON	VAR

REVISIONS				
REV	DESCRIPTION	ECN	DATE	APP'D



- 3.) RECOMMENDED MOUNTING TORQUE 20-24 IN LBS (226-271 NEWTON CENTIMETERS).
- $\triangle 2$ DRILL PERPENDICULAR TO MOUNTING SURFACE TO WITHIN $\pm 1^\circ$.
- $\triangle 1$ MOUNTING SURFACE UNDER TRANSDUCER MUST BE FLAT WITHIN $.001 (0.03)$ TIR OVER A $\phi .436 (\phi 11.07)$ MIN WITH A $63\sqrt{(1.6)}$ FIN.

UNLESS SPECIFIED TOLERANCES		DRAWN	JAB	9/20/94	MFG	RJA	9/23/94	PCB PIEZOTRONICS, INC. 3425 WALDEN AVE. DEPEW, NEW YORK 14043 PHONE: (716) 884-0001
DIMENSIONS IN INCHES	DIMENSIONS IN MILLIMETERS (IN PARENTHESES)	CHK'D	Ray	9/21/94	ENGR	DC	9-21-94	
DECIMALS XX $\pm .01$ XXX $\pm .005$	DECIMALS X ± 0.3 XX ± 0.13	APP'D	JB	9/22/94	Sites	SGC	9/23/94	
ANGLES ± 2 DEGREES	ANGLES ± 2 DEGREES	TITLE					CODE IDENT. NO.	
FILLETS AND RADII $.003 - .005 (0.07 - 0.13)$	INSTALLATION DRAWING MODEL 208A24 FORCE TRANSDUCER					52681		1702
SCALE: 2X							SHEET 1 OF 1	