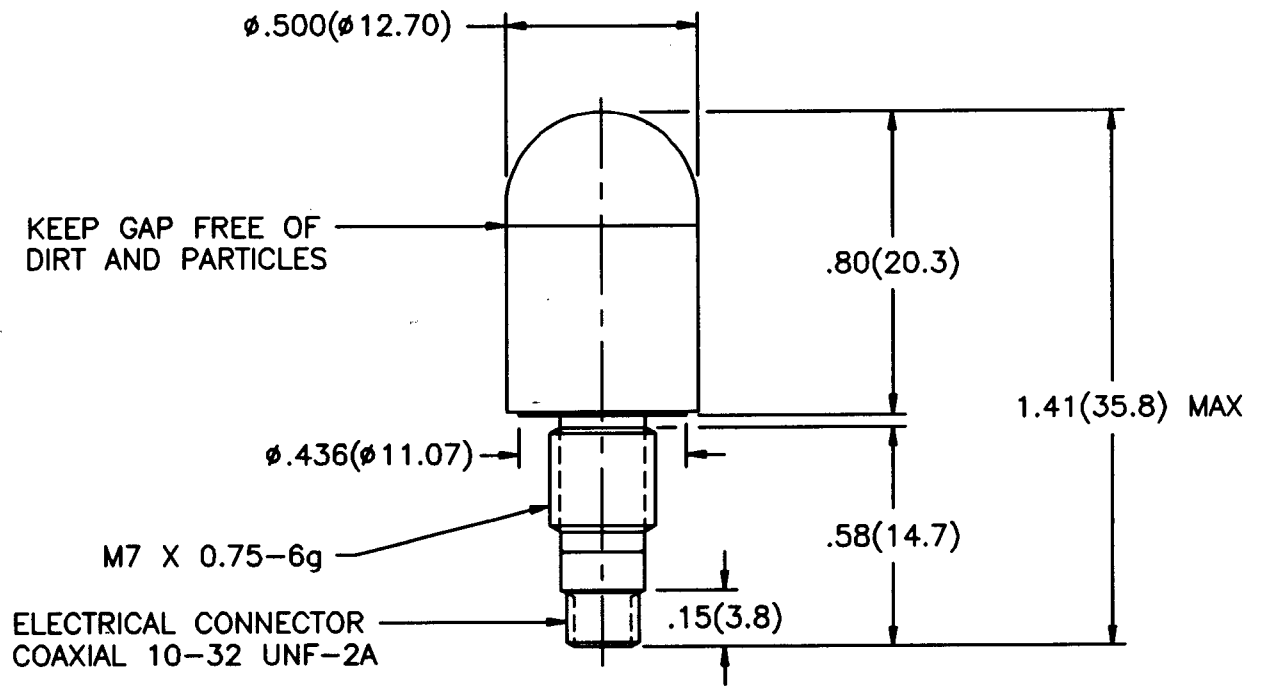


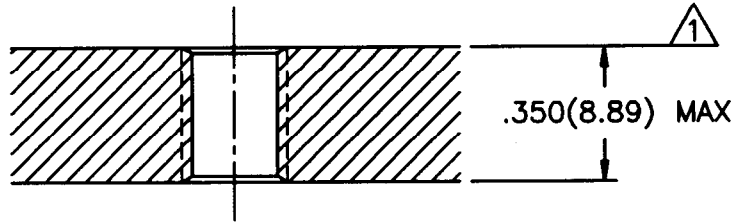
1700

APPLICATION		
NEXT ASS'Y	USED ON	VAR

REVISIONS				
REV	DESCRIPTION	ECN	DATE	APP'D



MOUNTING HOLE PREPARATION
 DRILL $\phi .250 (\phi 6.35)$ $\triangle 2$
 THRU
 TAP M7 X 0.75-6H
 THRU



- 3.) RECOMMENDED MOUNTING TORQUE 20-24 IN LBS (226-271 NEWTON CENTIMETERS).
- $\triangle 2$ DRILL PERPENDICULAR TO MOUNTING SURFACE TO WITHIN $\pm 1^\circ$.
- $\triangle 1$ MOUNTING SURFACE UNDER TRANSDUCER MUST BE FLAT WITHIN $.001 (0.03)$ TIR OVER A $\phi .436 (\phi 11.07)$ MIN WITH A $63\sqrt{1.6}$ FIN.

UNLESS SPECIFIED TOLERANCES		DRAWN	g.a.B	9/20/94	MFG	ROA	9/22/94	PCB PIEZOTRONICS, INC. 3425 WALDEN AVE. DEPEW, NEW YORK 14043 PHONE: (716) 684-0001
DIMENSIONS IN INCHES	DIMENSIONS IN MILLIMETERS (IN PARENTHESIS)	CHK'D	K.L.	9/22/94	ENGR	ADP	9/21/94	
DECIMALS XX $\pm .01$ XXX $\pm .005$	DECIMALS X ± 0.3 XX ± 0.13	APP'D	AS	9/22/94	Sites	SGC	9/23/94	
ANGLES ± 2 DEGREES	ANGLES ± 2 DEGREES	TITLE		INSTALLATION DRAWING MODEL 208A22 FORCE TRANSDUCER		CODE IDENT. NO.	52681	
FILLETS AND RADII $.003 - .005 (0.07 - 0.13)$		SCALE:		2X		SHEET 1 OF 1		