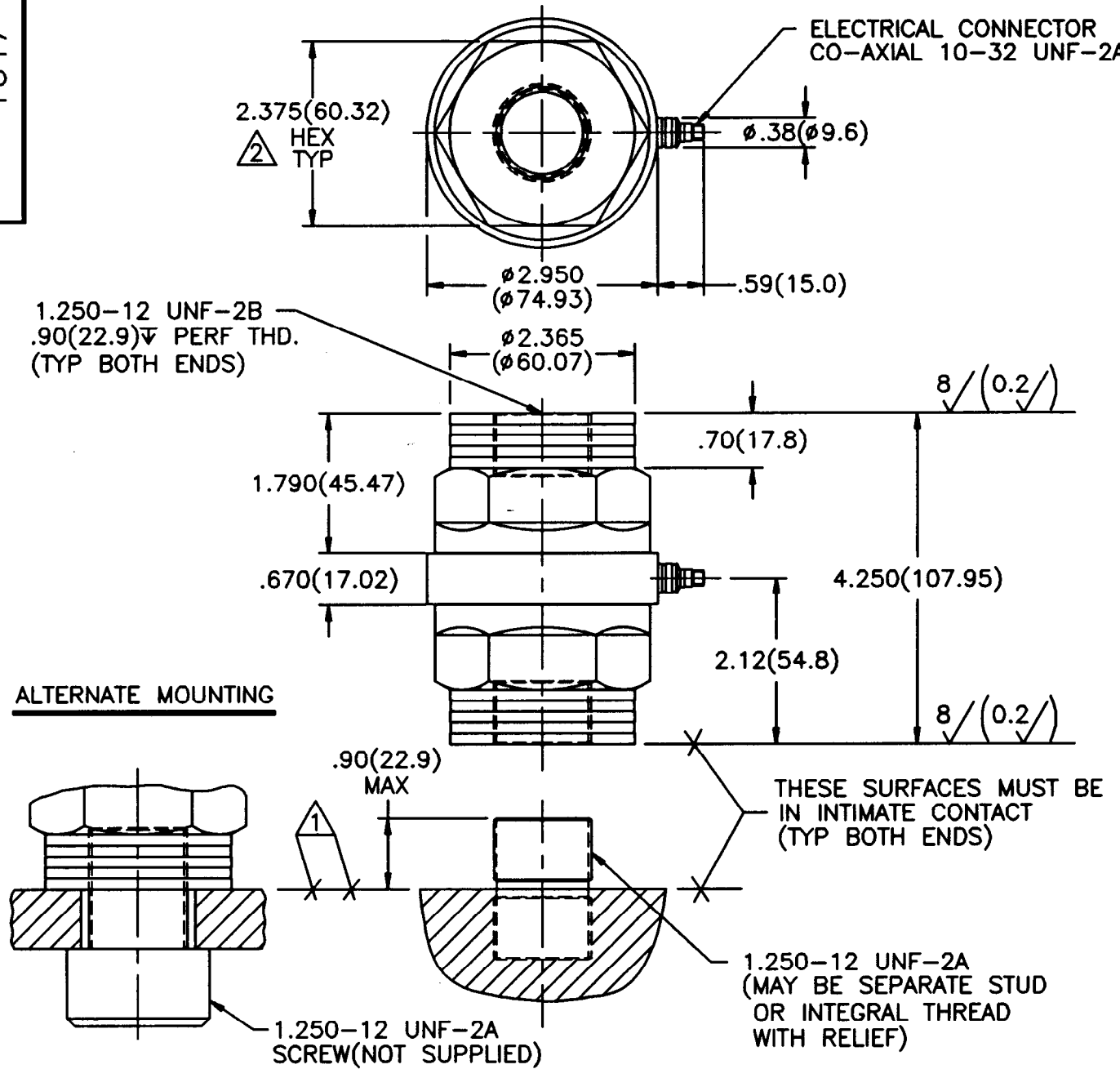


1647

APPLICATION		
NEXT ASSY	USED ON	VAR

REVISIONS				
REV	DESCRIPTION	ECN	DATE	APP'D



- 4.) COMPRESSIVE FORCE RESULTS IN NEGATIVE GOING OUTPUT CHARGE.
- 3.) EPOXY OR LOCTITE MAY BE USED ON THREADS TO LOCK FORCE LINK IN PLACE.
- \triangle RECOMMENDED MOUNTING TORQUE ON 2.375(60.32) HEX 45-50 FOOT POUNDS (61-68 NEWTON METERS).
- \triangle MOUNTING SURFACES MUST BE FLAT TO WITHIN .001(0.03) TIR WITH A MIN 63/(1.6/)_{FIN.}

UNLESS SPECIFIED TOLERANCES		DRAWN <i>AGB</i> 9/6/94 MFG <i>D.L.</i> 9/7/94 CHK'D <i>DM</i> 9/7/94 ENGR <i>NO</i> 9-7-94 APP'D <i>AS</i> 9/8/94 SLES <i>SGC</i> 9/7/94 TITLE INSTALLATION DRAWING MODEL 237B HERMETIC SEALED FORCE LINK	PCB PIEZOTRONICS, INC. 3425 WALDEN AVE. DEPEW, NEW YORK 14043 PHONE: (716) 684-0001 CODE 52681 DWG. NO. 1647 SCALE: .5X SHEET 1 OF 1
DIMENSIONS IN INCHES DECIMALS XX \pm .01 XXX \pm .005 ANGLES \pm 2 DEGREES	DIMENSIONS IN MILLIMETERS (IN PARENTHESIS) DECIMALS X \pm 0.3 XX \pm 0.13 ANGLES \pm 2 DEGREES	FILLETS AND RADII .003 - .005 (0.07 - 0.13)	